

THE STAVELOT MASSIF FROM CAMBRIAN TO RECENT A SURVEY OF THE PRESENT STATE OF KNOWLEDGE

by

M.J.M. BLESS¹, J. BOUCKAERT²⁻³, T. CAMELBEECK⁴, L. DEJONGHE²,
A. DEMOULIN⁵, C. DUPUIS⁶, P.J. FELDER¹, F. GEUKENS³, F. GULLENTOPS³,
L. HANCE², J.W.M. JAGT⁷, E. JUVIGNE⁸, U. KRAMM⁹, A. OZER⁸,
A. PISSART⁸, F. ROBASZYNSKI⁶, R. SCHUMACKER¹⁰, A. SMOLDEREN³,
G. SPAETH¹¹, Ph. STEEMANS¹, M. STREEL¹, G. VANDENVEN²,
M. VANGUESTAINE¹, R. WALTER¹² & M. WOLF¹³

(17 figures)

RESUME.- A l'occasion de la réunion des géologues Meuse-Rhin au Mont Rigi (Hautes Fagnes, Massif de Stavelot), les 18-19 mai 1990, une revue de la géologie du Massif de Stavelot a été préparée. Elle illustre l'état actuel des connaissances, des recherches géologiques pendant la dernière décennie et les problèmes qui subsistent.

ABSTRACT.- At the occasion of the annual Meuse-Rhine geologists meeting at Mont Rigi (Hautes Fagnes, Stavelot Massif) on May 18-19, 1990, a review has been prepared on the geology of the Stavelot Massif. It illustrates the actual state of the art, achievements and remaining problems, of the geological investigations during the past decade.

INTRODUCTION

The Stavelot Massif (also referred to as Stavelot-Venn Massif) consists of Cambro-Ordovician rocks (fig. 1). It is one of the four areas in the Ardenne where Cambrian rocks occur at or near the surface. However it is distinguished from the other three areas (Rocroi, Serpont and Givonne) by the presence of unequivocally Ordovician rocks, which form a sequence of at least 900m in thickness, representing the Early (and perhaps the base of the Middle) Ordovician. Deposits of the Middle and Late Ordovician, the entire Silurian and perhaps even the Early Lochkovian are missing in the stratigraphic record of this region. Apparently, sedimentation started again during the Late Lochkovian as deposits of this age fringe the border of the Stavelot Massif. In this context, it should be noted, that the «Grès de Petites Tailles» (Baraque Fraiture, southernmost part of Stavelot Massif) has been interpreted as a fluvatile «pre-Devonian» (Silurian?) sediment, deposited before the main Lochkovian transgression (Geukens, 1986).

1. Lab. Paléontologie végétale UL, Place du Vingt-Août 7, B-4000 Liège, Belgium.

2. Belgische Geologische Dienst, Jennerstraat 13, B-1040 Brussel, Belgium.

3. Afd. Geologie KUL, Redingenstraat 16bis, B-3000 Leuven, Belgium.

4. Observatoire Royal de Belgique, Avenue Circulaire 3, B-1180 Bruxelles, Belgium.

5. Froidbermont 30, B-4641 Olne, Belgium.

6. Lab. Géologie, Faculté Polytechnique de Mons, Rue Houdain 9, B-7000 Mons, Belgium.

7. Tweede Maasveldstraat 47, NL-5921 JN Venlo, The Netherlands.

8. Lab. Géomorphologie et Géologie du Quaternaire UL, Place du Vingt-Août 7, B-4000 Liège, Belgium.

9. Institut für Mineralogie der Universität Münster, Corrensstrasse 24, D-4400 Münster, R.F.A.

10. Station scientifique des Hautes Fagnes, Mont Rigi, B-4898 Robertville, Belgium.

11. Lehrstuhl Geologie und Endogene Dynamik RWTH Aachen, Lochnerstrasse 4-20, D-5100 Aachen, R.F.A.

12. Geologisches Institut RWTH Aachen, Wüllnerstrasse 2, D-5100 Aachen, R.F.A.

13. Lehrstuhl Geologie, Geochemie und Lagerstätten des Erdöls und der Kohle RWTH Aachen, Lochnerstrasse 4-20, D-5100 Aachen, R.F.A.

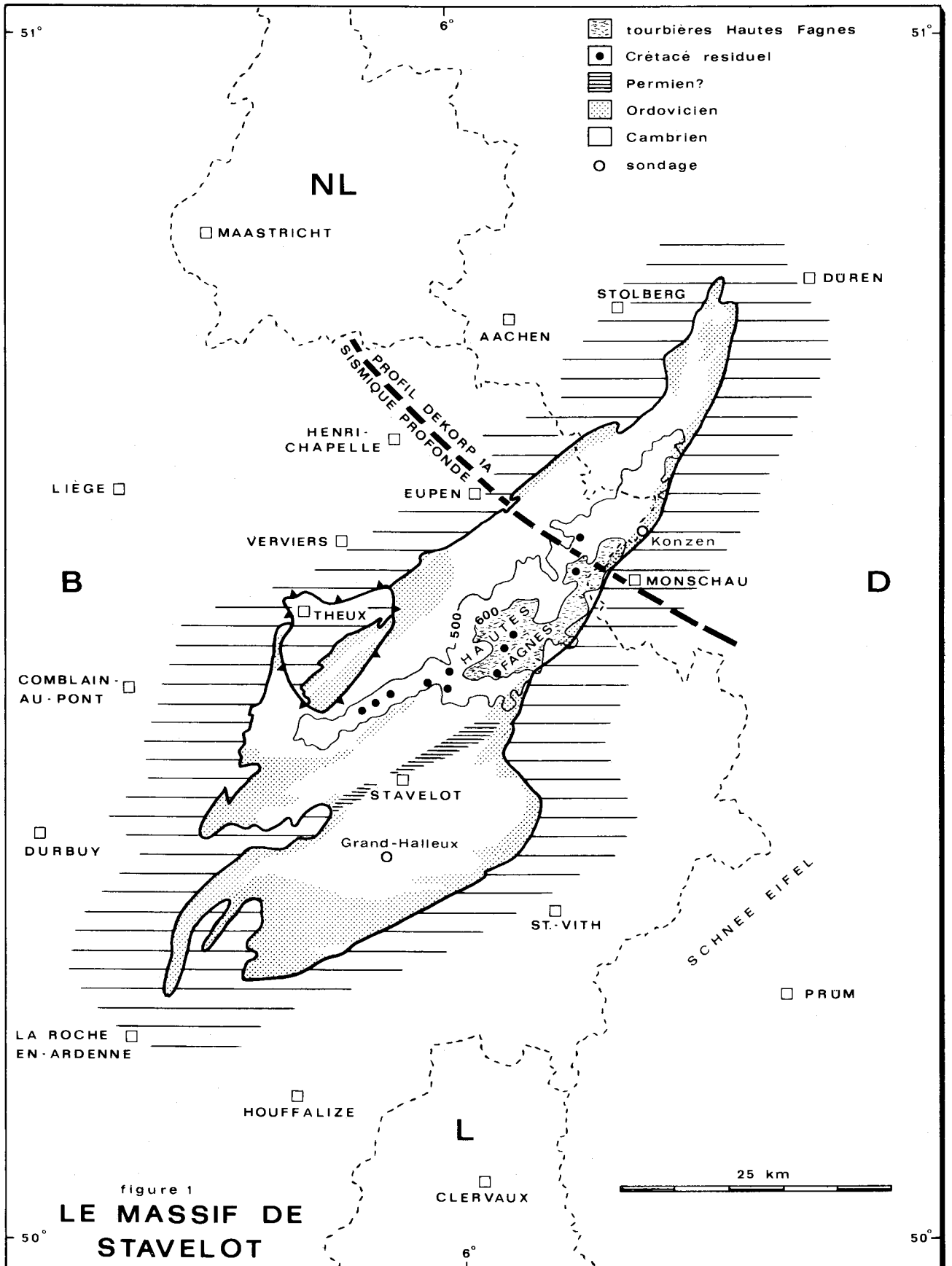


Figure 1.- Outline of the Stavelot Massif and the tectonic window of Theux. The 500 m and 600 m contour lines are only shown in the northern part of the massif, where locally residual Late Cretaceous deposits occur. However, it should be noted that several parts of the southern Stavelot Massif are also above 500 and 600 m altitude.

Numerous bio- and lithostratigraphical, petrological, sedimentological, structural, geophysical and morphological studies have been carried out in this area. Field observations were complemented by borehole information, e.g. at Grand Halleux (see Vanguetaine, 1978) in the south and at Konzen (Walter & Wohlenberg, 1985) in the north. Additionally seismic reflection investigations in the northeastern part of this area have revealed the structural style of the Caledonian and Variscan fault pattern «down to the Moho discontinuity» (Betz *et al.*, 1988). In spite of all this information, many questions remain. The present review of achievements and problems will illustrate this.

STRUCTURAL STYLE

(R.W., J.B., L.D., F.Ge., L.H.)

The Stavelot Massif forms the northeast end of the Ardenne Anticlinorium, which further to the SW also includes the Serpont uplift and the Rocroi Massif. The oldest outcropping rocks are Early Cambrian Deville deposits, which are overlain by the Middle-Late Cambrian Revin strata, and on top of which rest in the Stavelot Massif the Early-Middle Ordovician Salm sediments. The Caledonian tectonic movements must have already shaped the final outline of the Ardenne Anticlinorium. However, the E-W trending Caledonian folds in the Stavelot Massif are overprinted by SW-NE striking Variscan tectonics. Two complexly folded and faulted anticlinal structures can be distinguished in the Stavelot Massif which are separated by the «Graben de Malmédy» with an infill of presumably Permian conglomerates («Poudingue de Malmédy»; Geukens, 1957).

The northwest flank of the Stavelot Massif is characterized by flat-flying thrust faults. One of these is very clearly exposed at Heusy along the expressway Verviers-Prüm (Hance *et al.*, 1989). The famous «Fenêtre de Theux» has been looked upon as a textbook example of a tectonic window ever since Fourmarier's publications (1901-1969). However, this structure has been interpreted in quite different ways (e.g. Geukens, 1959; Graulich, 1984; Klein, 1977a, 1977b; Michot, 1988). Especially the nature of its southern closure was and still is the subject of continued discussion (Robaszynski & Dupuis, 1983).

Four deep seismic reflexion lines have been carried out across the northeast Stavelot Massif and its northern foreland (Meissner *et al.*, 1980, 1981; Durst, 1985; Betz *et al.*, 1988; Dekorp Research Group, in press). These surveys yield information about the deep structures of this area. The line-drawing of the more recent profile Dekorp 1A has tentatively been interpreted on figure 2.

A pronounced reflector at a depth of about 3-4 km can be followed over a long distance on each profile. This reflector is interpreted as the southward subsurface continuation of the Midi-Aachen overthrust, but we can only speculate as far as the age and nature of the rocks below this reflector are concerned. Some possible alternative solutions have been forwarded by Walter & Wohlenberg, (1985). Only a deep borehole may produce the final answer. However, north of the «Fenêtre de Theux», the subsurface trace of the Midi-Aachen overthrust is not always very clear, perhaps because it occurs within Caledonian rocks (Dejonghe *et al.*, 1989).

Magmatic rocks are found in the Revinian. Most of them are either interbedded and of rhyolitic/rhyodacitic composition or intrusive and of basaltic composition. There are two main exceptions: the Helle and Lammersdorf sill-type intrusions (referred to as «tonalites») which are of granodioritic to dioritic composition. U-Pb zircon dating of the Helle tonalite has given 381 ± 16 Ma (Kramm & Buhl, 1985). Porphyry Cu-Mo type mineralisation is associated to the Helle intrusion (Van Wambeke, 1956; Weis *et al.*, 1980).

CAMBRO-ORDOVICIAN

(M.V., R.W.)

The paleogeographical evolution of the Stavelot region during the Cambro-Ordovician is marked by important changes in the depositional environment related to alternating uplift and subsidence, sometimes accompanied by active volcanism (Walter, 1980). It is because of the many fault contacts that the lithostratigraphic succession of the Cambro-Ordovician and its thickness are incompletely known. The biostratigraphic zonation based on acritarchs (fig. 3) is still not fully established (cf. Vanguetaine & Van Looy, 1983; Vanguetaine, 1985, 1986).

The presence of occasionally rich and diverse acritarch assemblages in the Cambro-Ordovician strata of the Stavelot Massif illustrates the very low-grade Caledonian metamorphism. Destruction of the organic-walled fossils took only place along the southeast flank of the massif (including the basal Devonian) during the Variscan metamorphism.

The depositional history of the Stavelot Massif during the Cambro-Ordovician was summarized by Von Hoegen *et al.* (1985). Presumably, the Deville quartzites, sandstones and (silty) shales were deposited in a nearshore - gradually deepening - shelf environment (fig. 4). The black shales of the Revin succession reflect conditions of an outer shelf or even deeper basin during the

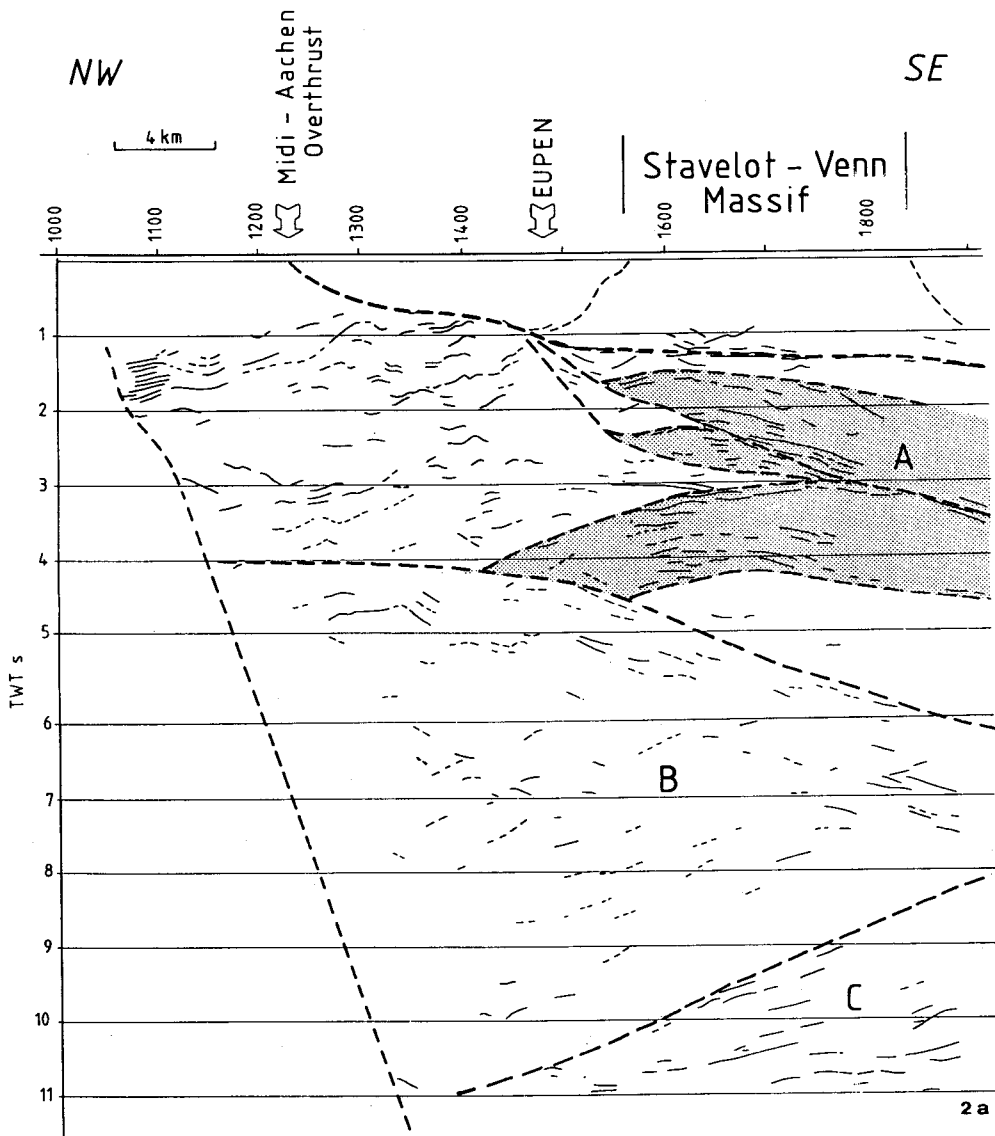
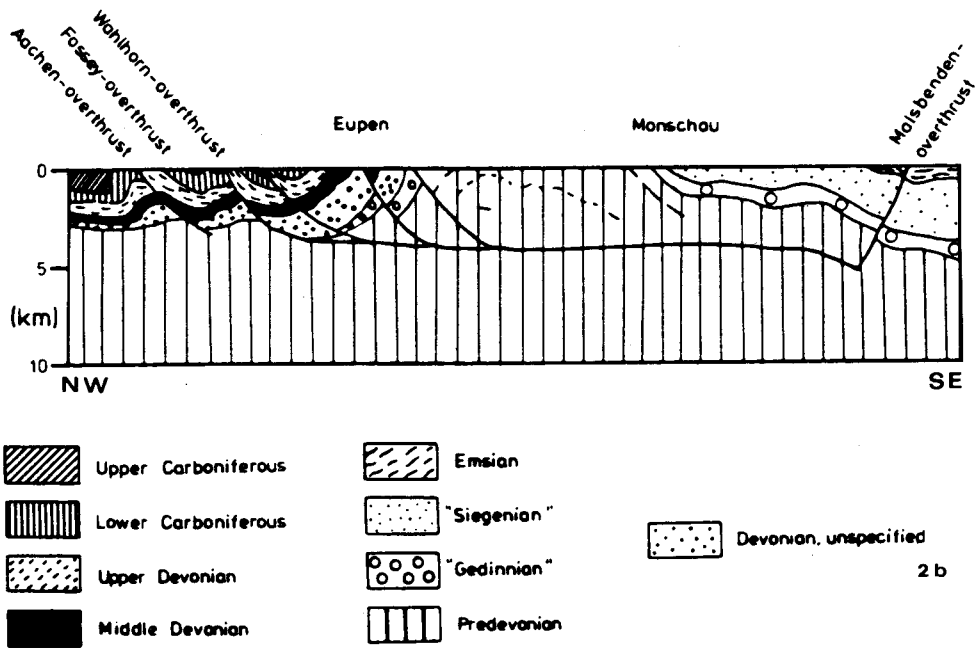


Figure 2.- Geological section through the northern part of the Stavelot Massif (2b, R.W.) and line drawing of the northern part of the seismic reflection profile DEKORP 1-A (2a; J.B., L.H.). Interpretation of figure 2a : A. Duplex structure?; B. Southerly wedge of the Brabant Massif; C. Lower laminated crust.

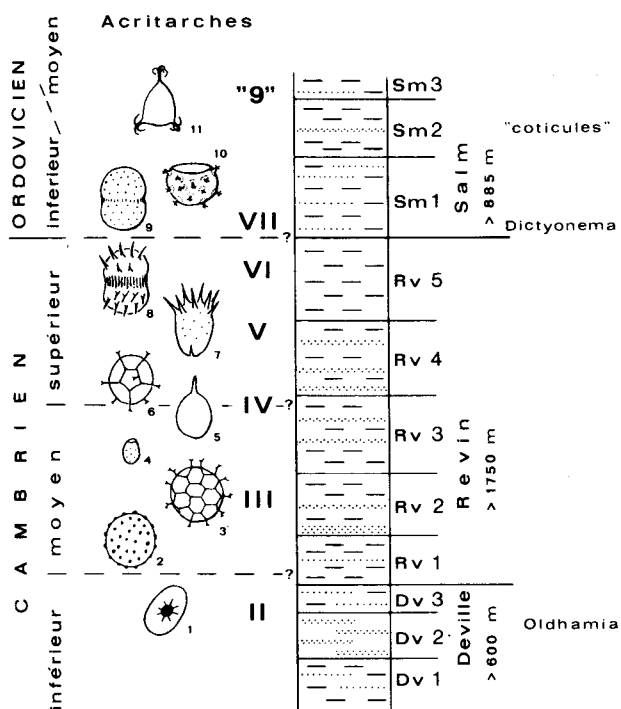


Figure 3.- Synoptic stratigraphy of the Cambro-Ordovician in the Stavelot Massif, Lithostratigraphy after Geukens (*in*: Robaszynski & Dupuis, 1983), chrono-/biostratigraphy after Vanguetaine (*in*: Robaszynski & Dupuis, 1983).

- 1-11. selected acritarchs: 1. *Archaeodiscina umbonulata*; 2. *Lophosphaeridium tentativum*, 3. *Timofeevia phosphoritica*; 4. *Revinotesta microspinoso*; 5. *Alliumella baltica*; 6. *Timofeevia pentagonalis*; 7. *Trunculumarium revinium*; 8. *Acanthodiacrodium timofeevii*; 9. *Acanthodiacrodium angustum*; 10. *Stelliferidium trifidum*; 11. *Frankea sartbernardensis*. II-VII, «9»: acritarch zones.

Middle and Late Cambrian. Analysis of the heavy mineral assemblages from the intercalated psammitic quartzites has shown that these are reworked from the Deville Formation, which may have been exposed in nearby shoals. The Ordovician Salm deposits represent a prograding delta facies in a regressive environment. Important changes in the petrographic composition of the sediments at the Revin-Salm boundary suggest different sources for the Revin and Salm sediments.

LOCHKOVIAN TRANSGRESSION

(Ph.S., M.S.)

Following an important gap in the stratigraphical record (Middle-Late Ordovician, Silurian), the deposition in the Stavelot area started again during Lochkovian times. Detailed palynological investigations revealed that sedimentation along the northwest flank of the Stavelot Massif (Gileppe, Spa, Nonceveux) did not start until the Late Lochkovian (spore zones M or Si), whereas the oldest Devonian strata along the flanks of the Rocroi Massif to the southwest are of Early Lochkovian age (spore zones N and R; Steemans, 1989a).

The diachronic onset of the Devonian sedimentation is also illustrated by the different age of the basal Devonian strata in the Gileppe section on the northwest flank of the Stavelot Massif (spore zone M) and the Huy section between Namur and Liège (spore zone Si; Steemans 1989a). Even the

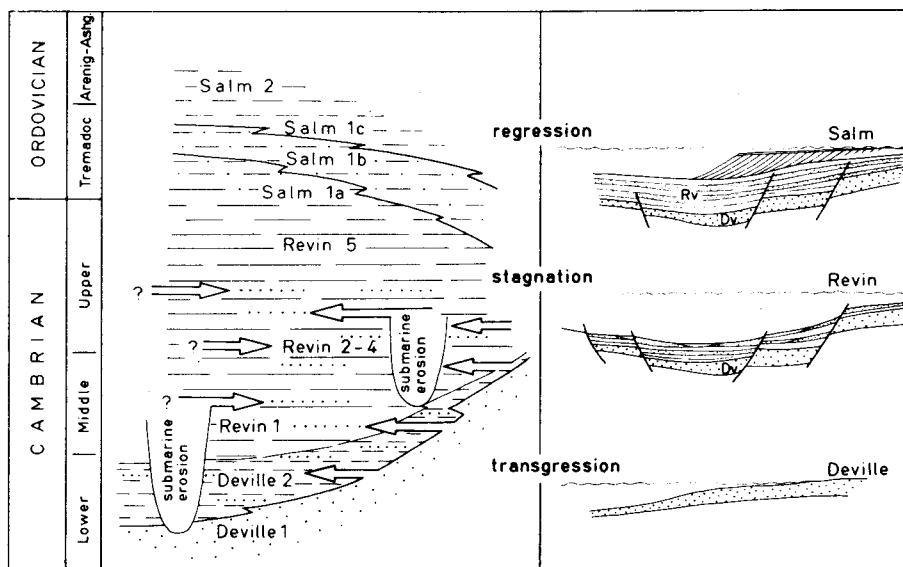


Figure 4.- Sedimentary history of the Stavelot Massif during the Cambro-Ordovician (from Von Hoegen *et al.*, 1985)

COUCHES DE :	
Oig.	OIGNIES
Mon.	MONDREPUTS
Hay.	HAYBES
Fep.	FEPIN
Aus.	BOIS d'AUSSE
Foo.	FOOZ
Omb.	OMBRET
Qua.	QUARREUX
Gdo.	GDOUMONT

	POUDINGUE		GRES
	SCHISTES		ARKOSE
	BRACHIOPODES etc		

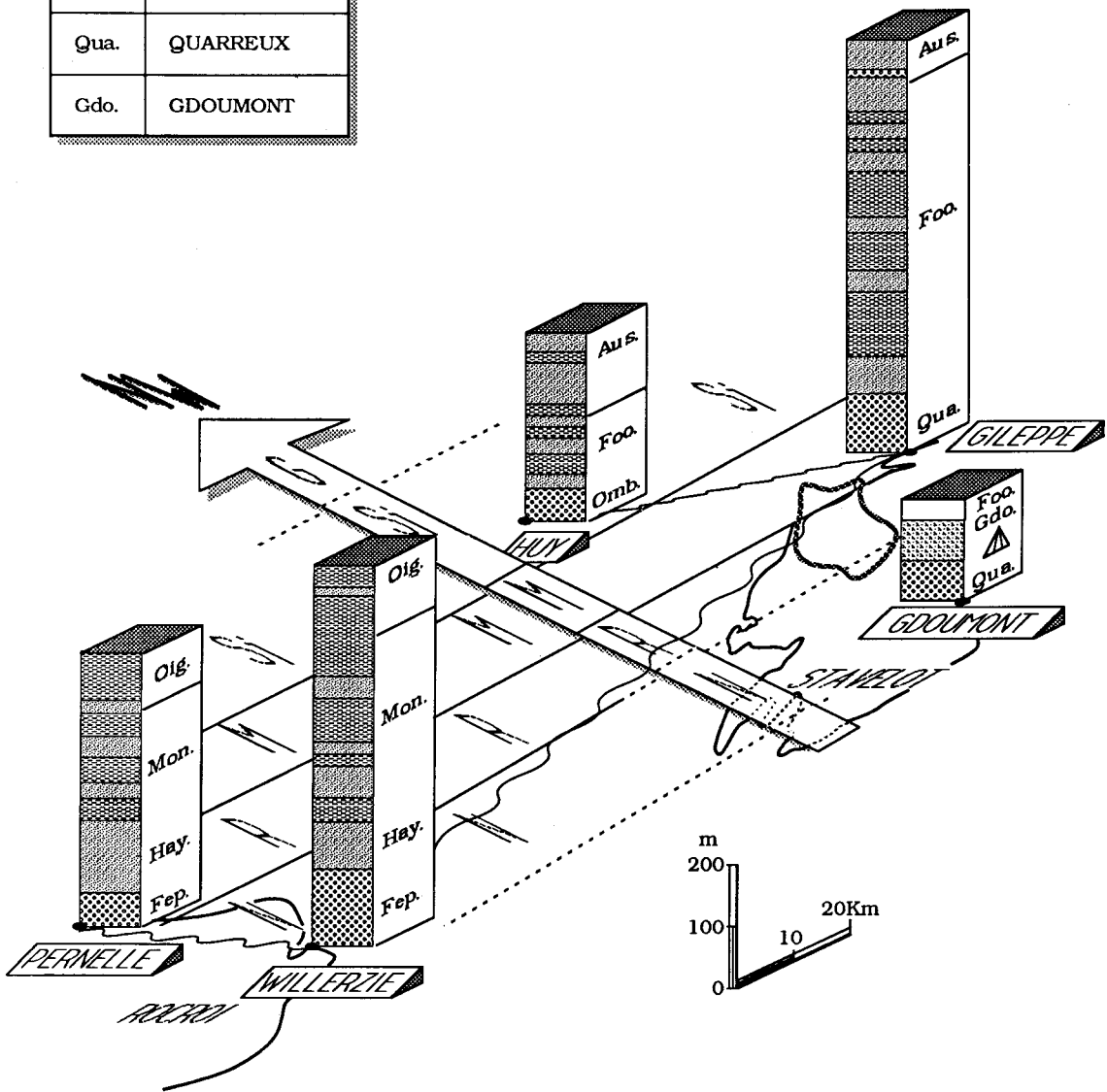


Figure 5.- Diachronic onset of Lochkovian transgression in Belgium as determined by spore assemblages (modified after Steemans, 1989a). The exact age of the Gdoumont section could not be established because of the high coalification rank in that area.

nearby sections of Willerzie (east flank of the Rocroi Massif; spore zone N) and Pernelle (northwest flank of Rocroi Massif; spore zone R) show a marked difference in age of the basal Devonian strata (fig. 5).

These observations serve to emphasize the northwesterly direction of the Lochkovian transgression. This implies that the «Gedinnian» brachiopod assemblages of Gdumont (SE of Stavelot Massif) may be older (Late Silurian or Early Lochkovian) than the basal Devonian strata along the northwest flank of the Stavelot Massif (cf. Boucot, 1960; Carls, 1977; Steemans, 1989b). Graulich (1951) and Neumann-Mahlkau (1970) also assumed the Lochkovian sea to have transgressed upon the Stavelot area from the southeast. Therefore, it is possible that the southeast flank of the Stavelot Massif was already flooded during the Early Lochkovian (spore zones N

or R). This assumption, however, should be tested by means of future investigations. The occasionally extremely high coalification of the basal Devonian strata along the southeast flank naturally poses a problem (see Kramm *et al.*, 1985).

DEVONO-CARBONIFEROUS

(M.J.M.B., J.B., M.S.)

The Stavelot Massif is distinguished from its surroundings by the absence of Devono-Carboniferous sediments, which must have been removed here before the deposition of the «Poudingue de Malmédy» during the Permian (cf. Renier, 1902). Therefore, only indirect evidence is available as to its paleogeographic position during the Devonian

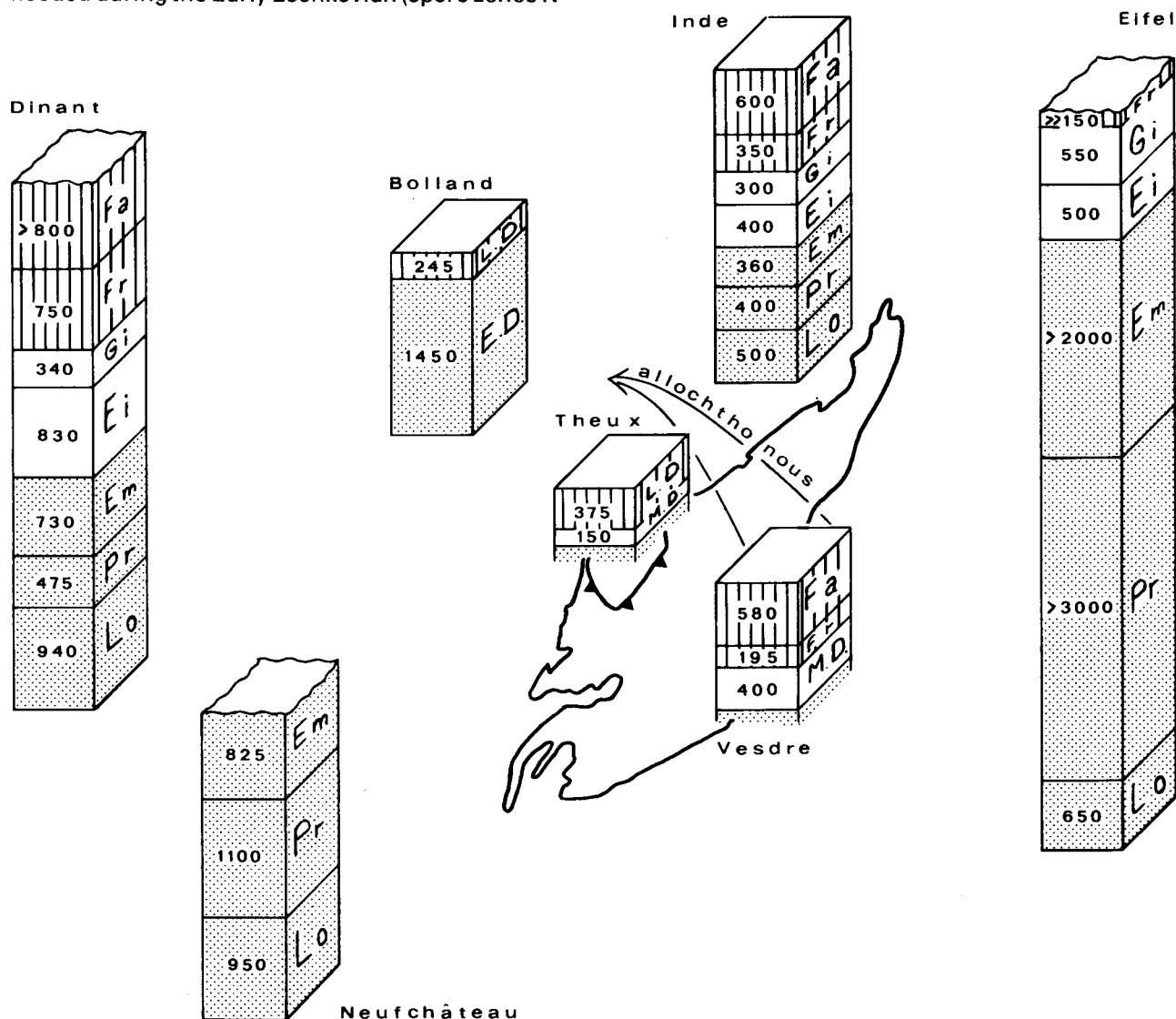
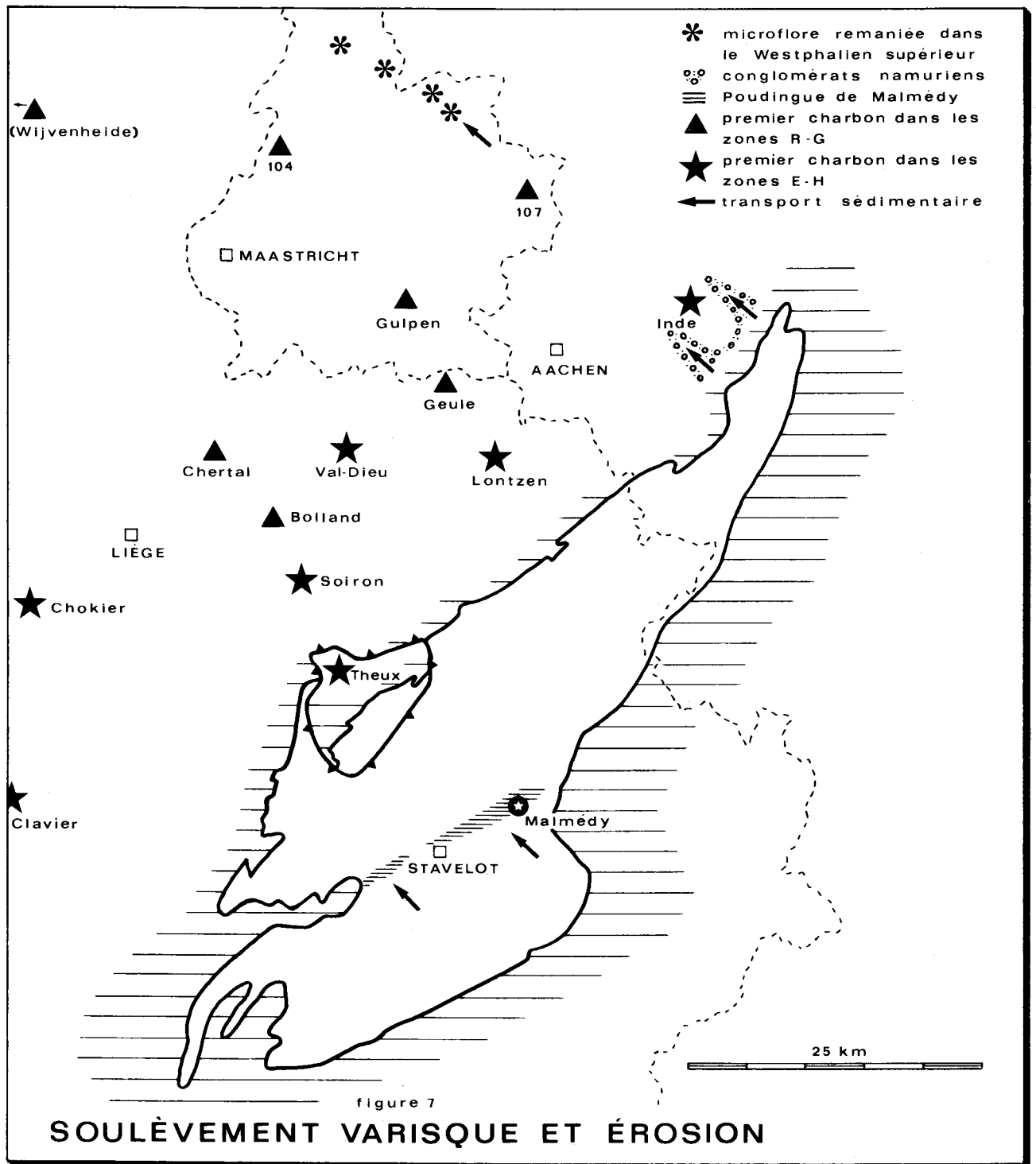


Figure 6.- Thickness variations of Devonian deposits around the Stavelot Massif. After data from Lecompte (1967), Godefroid (1982), Struve (1982), Graulich (1975; and in Robaszynski & Dupuis, 1983), Richter (1985) and Walter *et al.* (1985). Note that the column of the allochthonous Vesdre area has been restored to its original relative position in order to obtain a better understanding of the gradual decrease in thickness of the Middle-Late Devonian deposits towards the NW between the Eifel area and the Bolland borehole.

The thickness of the Early Devonian in the Theux and Vesdre column is not indicated!



and Carboniferous. Marked differences in the thickness of Devonian deposits to the NW and SE of this massif provide evidence of the variations in the relative rate of subsidence (fig. 6).

During the Early Devonian, the Stavelot Massif separated an area of extremely rapid warping in the SE (5-6000 m in Neufchâteau-Eifel) from an area with a more moderate subsidence in the NW (1250-1450 m in Inde-Bolland). The reduced thickness of the Early Devonian in the «Fenêtre de Theux» suggests that the Stavelot Massif at least in part belonged to the more slowly subsiding Bolland-Inde area.

The pronounced difference in the thickness of the Middle and Late Devonian of the allochthonous Vesdre Massif (originally situated somewhere on the Stavelot Massif south of the «Fenêtre de Theux»; cf. Michot, 1988) and that of the «Fenêtre de Theux» illustrates the differential subsidence within the Stavelot Massif during that time. Notably the Middle Devonian succession is marked by frequent gaps and littoral to perhaps continental deposits both in the «Fenêtre de Theux» and the Vesdre Massif (e.g. Goé macroflora; see Leclercq, 1940; Leclercq & Andrews, 1960; Leclercq & Bonamo, 1971; Lele & Streeel, 1969; Lessuisse & Fairon-Demaret, 1980). The differential warping during the Middle-Late Devonian may be linked to the Acadian(?) intrusion of the Helle and Lammersdorf tonalites (381 MA; Kramm & Buhl, 1985).

Data on the Carboniferous are limited for the northwest flank of the Stavelot Massif. The presence of reworked Dinantian rocks in the Namurian conglomerates of the Inde area and in the presumably Permian «Poudingue de Malmédy» evidences that Dinantian sediments were also deposited in the Eifel-Neufchâteau area. Namurian conglomerates derived from the south in the Inde area point to Early Namurian uplift and erosion of the northeasternmost part of the Stavelot Massif. However, the onset of the main uplift and subsequent erosion of this area may be correlated with the Middle Westphalian metamorphic event along its southeast flanks (308-312 MA; Kramm *et al.*, 1985a).

VARISCAN UPLIFT AND EROSION

(M.J.M.B., J.B., A.O., A.S., M.S., G.V.)

The end of the subsidence (or perhaps the onset of uplift) in the area of the Stavelot Massif is illustrated by the transition from fully marine to more paralic conditions (indicated by the appearance of coal seams and rootlet horizons). This transition started much earlier along the northwest border of the massif (Early Namurian

goniatite zones E-H) than in the area slightly further to the northwest (Late Namurian to earliest Westphalian goniatite zones R-G; cf. Bless & Paproth, 1989).

Uplift and erosion in the Ardenno-Rhenish area started as early as the Late Carboniferous. This is illustrated by the Namurian conglomerates in the Inde area (Burgholz/Walhorn; Gedau/Ardenne) with reworked Dinantian cherts (cf. Hahne & Seidel, 1936), and also by the occurrence of reworked palynomorphs in the Late Westphalian of southern Limburg and the Campine area, which were partly derived from Devono-Dinantian rocks of the Eifel and Rhenish Massif (cf. Bless & Streeel, 1976; Van de Laar & Fermont, 1989).

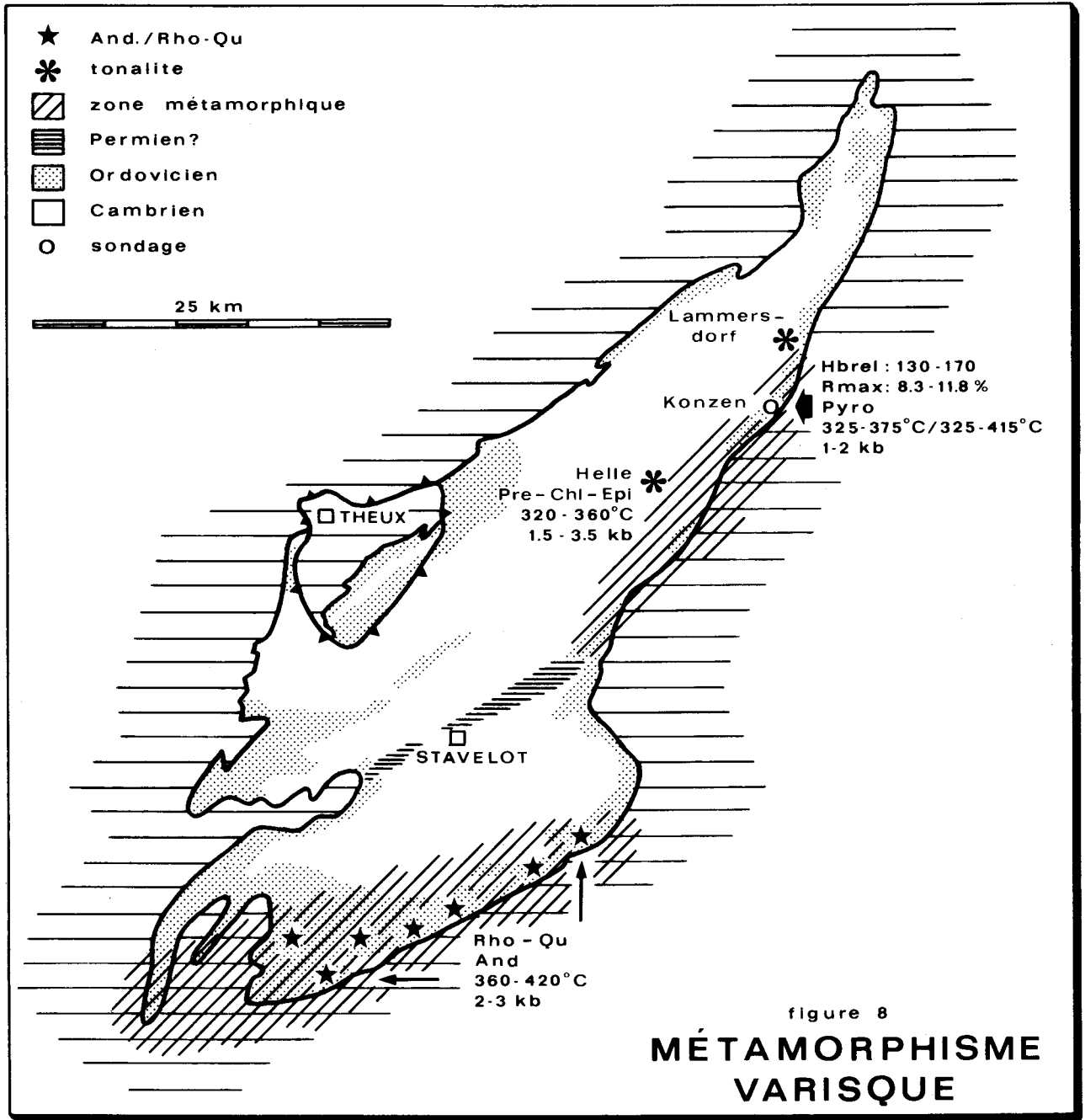
Denudation of the Cambro-Ordovician basement of the Stavelot Massif was completed before the (final) erosion of Devono-Dinantian rocks in the Eifel and Taunus. This is illustrated by the «Poudingue de Malmédy» (fig. 7). This conglomerate fills the WSW-ENE directed «Graben de Malmédy»; which separates the northern and southern parts of the Stavelot Massif (Geukens, 1957). The pebbles of this conglomerate have been reworked from the Cambro-Ordovician basement of the area, as well as from the Early and Middle Devonian of the Eifel and Taunus (Dumont, 1832; Renier, 1902, Maillieux, 1931). The youngest rocks represented in the conglomerate are of Early Dinantian (Ivorian) age as illustrated by the study of conodonts (Smolderen, 1987). The age of the deposit is unknown. Its attribution to the Permian (Renier, 1902) is based only on lithostratigraphic arguments. Paleomagnetic studies indicate that the magnetic pole of the «Poudingue de Malmédy» matches the position of the pole during the Permian (De Magnée & Nairn, 1962; Ozer, 1982).

CALEDONIAN AND VARISCAN METAMORPHISM

(U.K., G.S., M.W.)

Two low-grade metamorphic phases are distinguished in the Stavelot Massif. The first very low-grade one of Late Caledonian age (418 MA; Michot *et al.*, 1973) is characterized by a chlorite-muscovite mineral assemblage in the Deville phyllites of the Grand Halleux area in the southern part of the massif. The radiometric dating of this event was subsequently questioned by Kramm *et al.* (1985a).

The second phase of Variscan age (308-312 MA; Kramm *et al.*, 1985a) affected both the Ordovician (Salm) and Lochkovian rocks along the southern and eastern flanks of the Stavelot Massif (fig. 8; Kramm *et al.*, 1985b). The presence of



sensitive minerals such as andalusite on the one hand and rhodochrosite and quartz on the other in the Salm deposits to the south of Stavelot suggests a maximum pressure of 2-3 kb and a formation temperature between 360 and 420°C (Kramm *et al.*, 1985b). The Upper Salm metapelites in the northeastern area (Konzen borehole) contain pyrophyllite (Echle *et al.*, 1985), which indicates that metamorphism took place at 1-2 kb, and at temperatures of 325-375°C and 325-415°C, respectively (Kramm *et al.*, 1985b). Comparable temperature (320-360°C) and pressure (2.5 ± 1 kb) have been established for the prehnite-chlorite-epidote mineral assemblage of the Helle tonalite (Schreyer & Abraham, 1978).

Additional data on the Variscan metamorphism in the northeast part of the Stavelot Massif are provided by the study of illite crystallinity and coalification. High illite crystallinity (H_{brel} 100-120) in a narrow belt in the Cambro-Ordovician and Devonian rocks along the southeast flank of the massif near Konzen indicates the Variscan age of the low-grade metamorphism (temperature $> 350^\circ\text{C}$) in this area. Relatively low H_{brel} values in the Cambro-Ordovician rocks in the northwestern part of the massif may reflect a very low-grade Caledonian metamorphism that towards the east is overprinted by the Variscan metamorphism (Kramm *et al.*, 1985b). The discrepancy between the very high coal rank (R_{max} 8.3-11.8%) and the relatively low illite crystallinity (H_{brel} 130-170) in the Ordovician rocks of the Konzen borehole evidences the relatively short duration of the heat flow, because the improvement of illite crystallinity at a given temperature has a longer duration than the coalification of organic material (Kramm *et al.*, 1985b). These investigations should be extended to the Belgian part of the Stavelot Massif.

LATE CRETACEOUS TRANSGRESSION

(M.J.M.B., A.D., P.J.F., F.Gu., J.W.M.J., F.R.)

The residual Late Cretaceous deposits on the Hautes Fagnes massif evidence a step by step transgression of the area, which must have been a monadnock rising some 150 m above a pre-Late Cretaceous peneplain extending at least from the Stavelot area in the SE to the eastern Campine area in the NW (figs 9-10) prior to the Santonian to Maastrichtian transgression (Bless *et al.*, 1990). However, the southerly and easterly extension of the Campanian-Maastrichtian sea (perhaps flooding the Haute Ardenne and Eifel; cf. Demoulin, 1987a) remains a matter of debate.

«TONGRIAN» TRANSGRESSION

(M.J.M.B., A.D., C.D., P.J.F., F.Gu., J.W.M.J., A.P.)

The Cretaceous and Oligocene deposits in the Hautes Fagnes area are separated from those north of the line Liège-Aachen by an almost 20 km wide WSW-ENE directed depression with outcropping Paleozoic rocks (fig. 11). The rather deep valleys in this depression (e.g. those of the Inde, Vesdre and Amblève) came into existence during the Middle Oligocene when the Stavelot Massif and its northern foreland were slightly tilted to the NW, but the broad, asymmetric depression itself must have already been shaped by intensive erosion prior to the Oligocene. In the deepest part of this pre-Tongrian valley (about 200 m below the valley shoulders) not only the complete Cretaceous but also the upper portion of the underlying Paleozoic were removed. The northern valley slope consisted of eluvial flint covering the incompletely dissolved Cretaceous carbonates. Completely decalcified residual Cretaceous deposits were locally preserved on the crest of the Hautes Fagnes on the south flank of the valley. Through this valley, the sea invaded the region during the «Tongrian» (Early Oligocene; as explained by Gullentops, 1988, these strata are perhaps better placed in the Rupelian, since the main transgression took place during Rupelian time). The oldest «Tongrian» conglomerates and sands were deposited directly onto the Paleozoic basement (e.g. at Boncelles, and between 480 and 500 m altitude in the SW Hautes Fagnes at Minières/Tir Communal, Rondfahai and Trou Laurent; cf. Demoulin, 1987b, 1989).

Subsequently, the «Tongrian» transgression encroached upon the valley slopes and the northern plateau. On the lower part of the northern slope the so-called «Holset» sands and conglomerates were deposited on the eluvial flint. «Tongrian» sand with an occasional thin basal conglomerate rests on top of eluvial flint (e.g. at Halembaye; cf. Albers & Felder, 1981) or on the karstified top of the youngest Maastrichtian or Dano-Montian carbonates (e.g. at Enci and Thermae). More or less complete «Tongrian» sequences are preserved to the north of this pre-Tongrian valley (e.g. at Kleine Spouwen, Bunde, north of Valkenburg, and in the shafts of former coalmines in southern Limburg; cf. Albrecht & Valk, 1943; Felder *et al.*, 1984; Hinsberg *et al.*, 1973; Kuyl, 1980). In ascending order these consist of the Grimmertingen Sand, Neerrepen Sand, Henis Clay and Oude Biezen Sand, which all point to a very shallow shelf sea environment with transitory emersion (e.g. Neerrepen paleosol; cf. Gullentops, 1988).

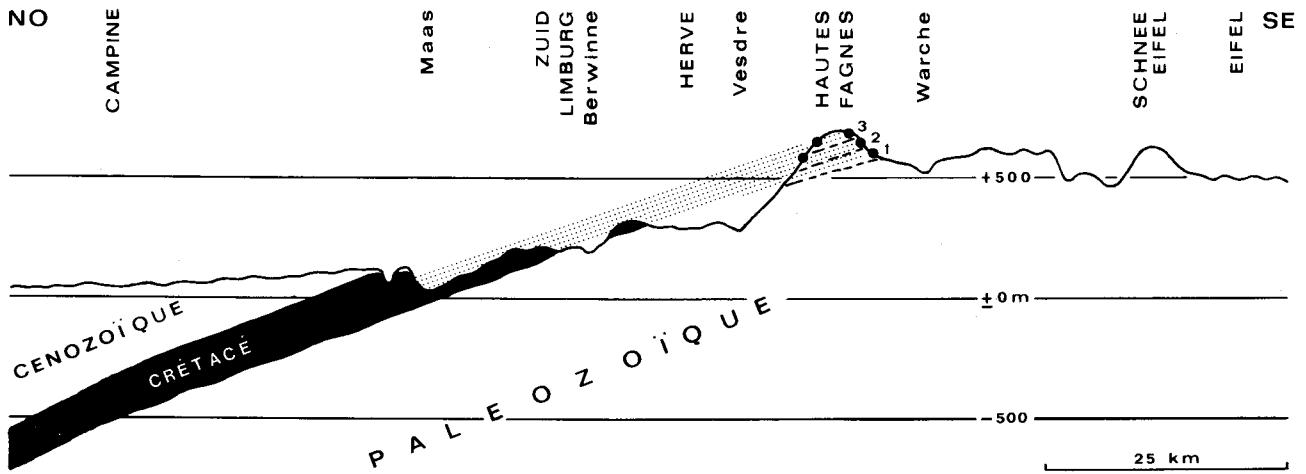


Figure 9.- NW-SE cross section showing step-like topography of Belgian Ardennes and their foreland, which developed independently after deposition of Late Cretaceous strata. Black dots in Hautes Fagnes relief indicate residual Late Cretaceous sediments. Figures 1 to 3 mark step by step flooding of Hautes Fagnes massif.

1. sequences starting with Early Campanian basal conglomerate; 2. Late Campanian basal conglomerate; 3. Late Maastrichtian basal conglomerate.

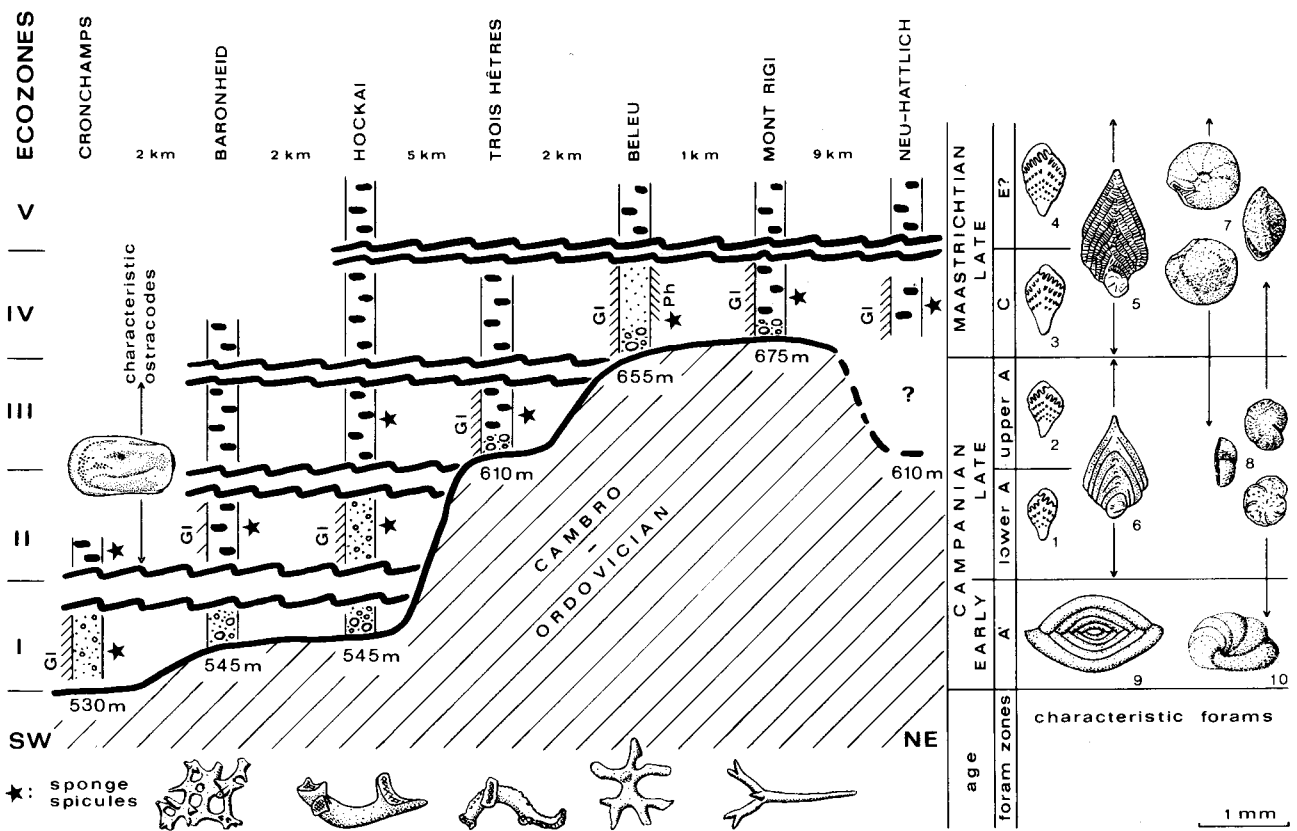
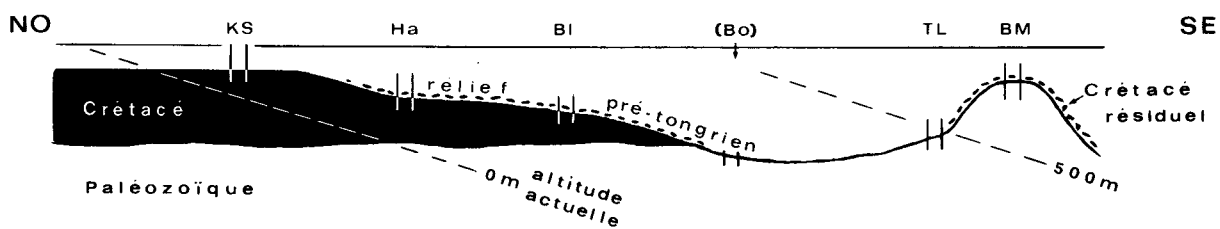
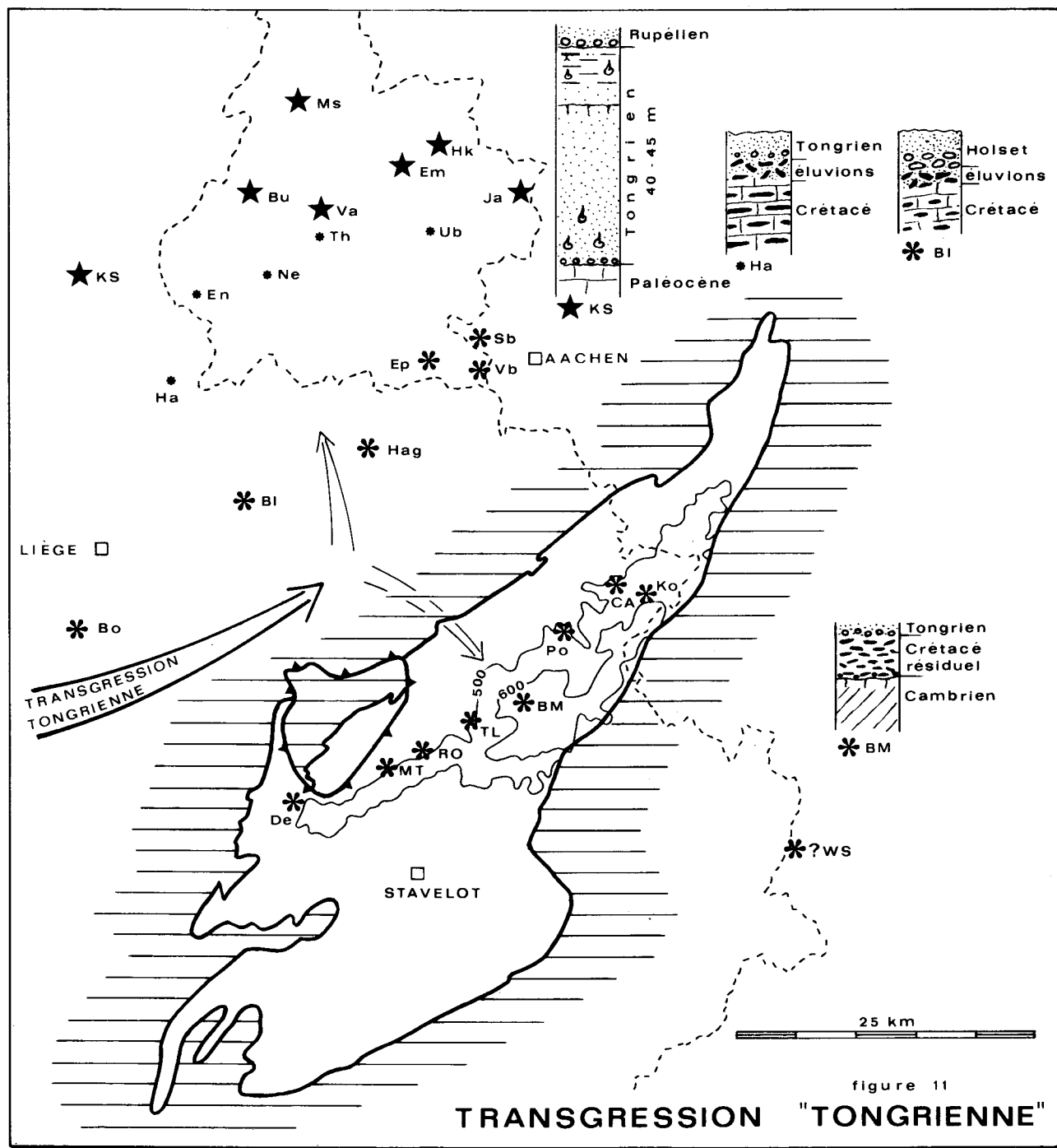


Figure 10.- Synthesis of Late Cretaceous deposits in the Hautes Fagnes area arranged from the SW to the NE (no vertical scale), their stratigraphic interpretation and some characteristic stratigraphic (forams, ostracodes) and paleoecological (sponges) elements. Note close correlation between transgressive trend of successively onlapping Cretaceous deposits and present-day height above sea level (indicated underneath each section) suggesting that actual morphology (at least from the SW to the NE) already existed during the Late Cretaceous.

Characteristic ostracodes : Late Campanian in the Hautes Fagnes is characterized by frequency and diversity of genus *Cytherelloidea*; the same is true for southern Limburg and Campine area. Presumably, this genus indicates a warming phase of the sea water (cf. Bless, 1989).

Characteristic forams : 1: *Bolivinoidea* gr. *decoratus* (Jones) with predominantly three pustules on last chamber; 2: *B. gr. decoratus* with predominantly four pustules on last chamber; 4: *B. gr. australis* with predominantly six pustules on last chamber; 5: *Neoflabellina reticulata* (Reuss); 6: *N. leptodisca* (Wedekind); 7: *Eponides beisseli* Schijfsma; 8: *Stensioeina pommerana* Brotzen; 9: *Spirophthalmidium cretaceum* (Reuss); 10: *Ataxophragmium crassum* (d'Orbigny).



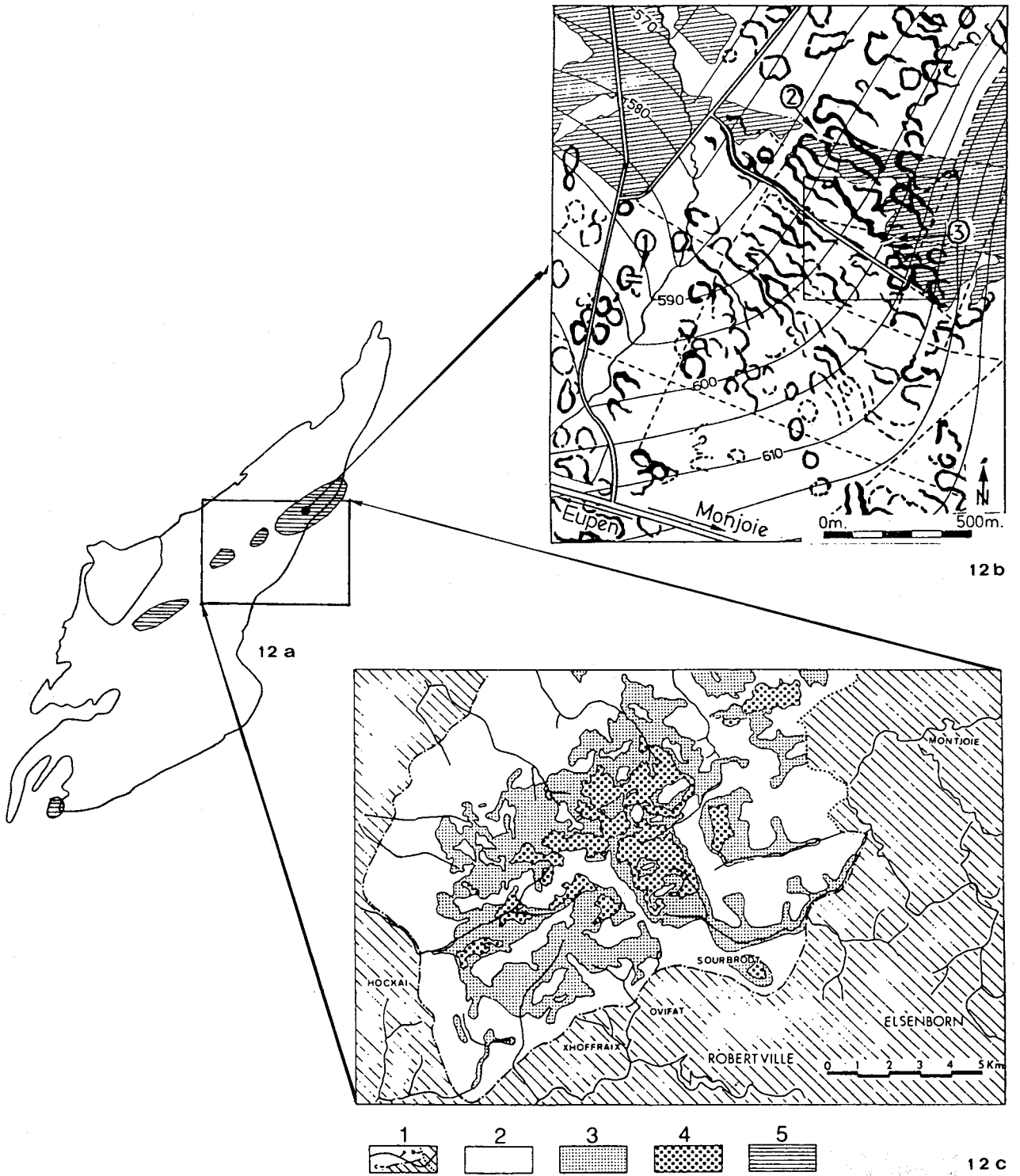


Figure 12.- Distribution pattern of palsas on the Stavelot Massif (a, b, after Pissart & Juvigné, 1980) and peat development in the Hautes Fagnes area (c, after Dalimier *et al.*, 1985).
 1a: brook; 1b: Belgian-German frontier; 1c: limit of the Hautes Fagnes area; 2: peat absent;
 3: thin peat layer (0-80 cm); 4: thick peat layer (more than 80 cm); 5: palsas fields.

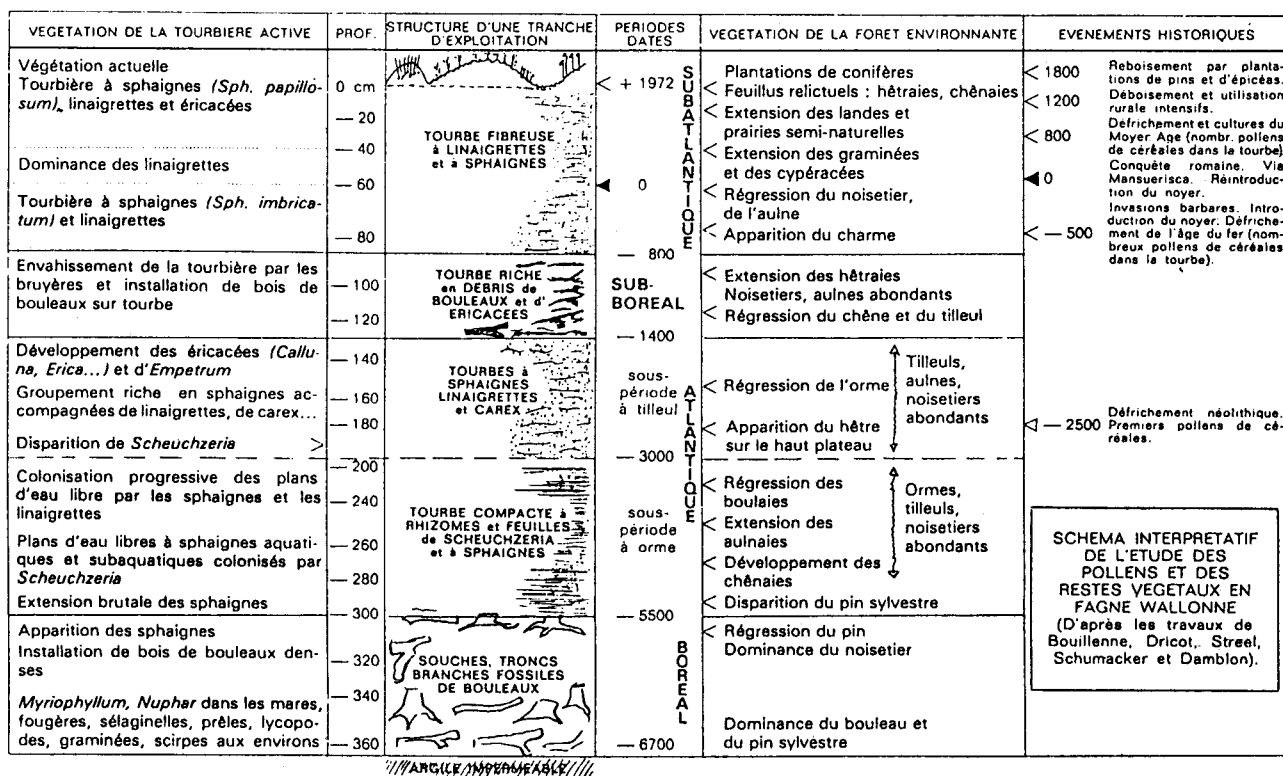


Figure 13.- Influence of climatic changes on the regional peat forming environment of the Hautes Fagnes during the Holocene (after Schumacker & Noirfalise, 1979).

Thin «Tongrian» deposits also occur on top of the residual Cretaceous at Baraque Michel on the summit of the Hautes Fagnes (Macar, 1954; Demoulin, 1989). The postulated southerly extension of the «Tongrian» sea into the Weisser Stein area (Demoulin, 1989) is in need of additional evidence.

QUATERNARY PEAT FORMATION

(E.J., A.P., R.S., M.S.)

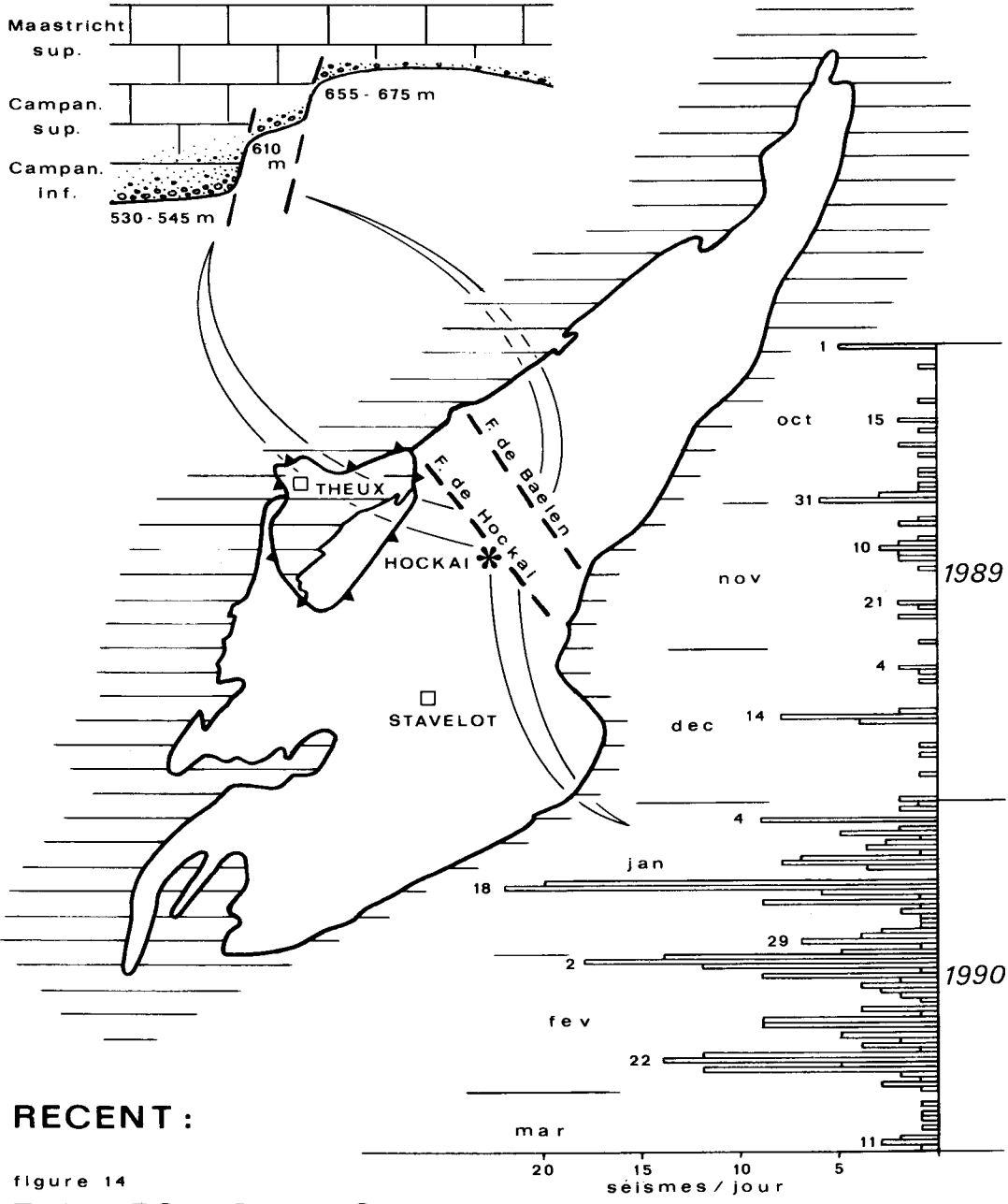
Peat formation on the Hautes Fagnes has a long and very complex history. For example in the Brackvenn area (northeast part of the Hautes Fagnes), guttya and peat formation already took place during the Bölling and Allerød, but was interrupted during the Younger Dryas when hundreds of periglacial mounds «grew» on the plateau. Traces of these mounds are easily recognized in the field. They have been named «viviers» (Bouillenne *et al.*, 1937), pingos (Pissart, 1956), palsas (Pissart & Juvigné, 1980), and more recently mineral palsas (Pissart, 1983), respectively.

Mineral palsas are mounds which grow because of the development of ice lenses in the

soil (segregated ice) and develop in periglacial environments where the mean annual temperature is slightly below 0°C (Dionne, 1978). In eastern Belgium, remnants of mineral palsas occur on plateaus above 550m (fig. 12). They consist of circular to elongated peat bogs surrounded by rims of loose mineral material (mainly clayey silt including debris from local Paleozoic rocks). 14C dating, pollen diagrams and tephrostratigraphic data indicate that the palsas formed during the Younger Dryas between 10.700 and 10.000BP (Bastin, 1985; Bastin *et al.*, 1974; Gewalt, 1983; Mullenders & Gullentops, 1969; Pissart, 1983, 1985; Pissart & Juvigné, 1980).

During the Boreal, peat forming vegetation started to cover almost the entire Hautes Fagnes area above the 600m level, filling depressions with up to 8m thick Holocene peat. Palynological investigations (Persch, 1950; Streel, 1959; Dambion, 1978; Schumacker & Noirfalise, 1979) have revealed the main changes in climate and regional environment which affected the peat formation in this region (fig. 13). These studies need a further refinement. They are incorporated into a Global Change Programme. This would enable us to obtain a better understanding of the impact of man on these extremely vulnerable environments.

CRÉTACÉ SUPÉRIEUR:



RECENT :

figure 14

FAILLES ACTIVES

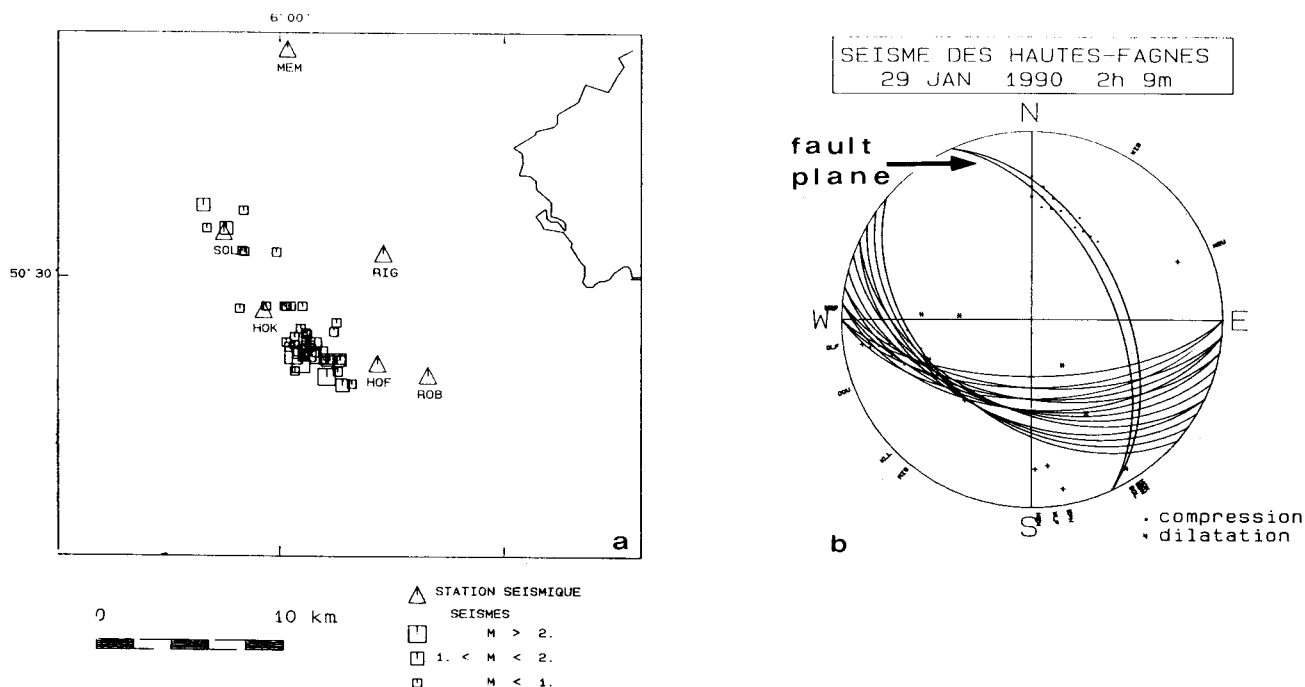


Figure 15.- Hypocentral repartition of earthquakes along Hockai fault zone and fault plane solutions of the Hautes Fagnes earthquake of January 29, 1990 (Camelbeeck, unpublished).

MEM: Membach; SOL: Solwaster; HOK: Hockai; RIG: Mont Rigi; HOF: Xhoffrai; ROB: Robertville.

QUATERNARY TECTONIC ACTIVITY

(M.J.M.B., J.B., T.C., L.D., A.D., F.Gu., L.H.)

Quaternary tectonic movements along NW-SE directed fault zones in the Stavelot Massif have been established by geomorphological investigations (Demoulin, 1988; Gullentops, 1987). At least some of these seem to have been active already during or prior to the Late Cretaceous (fig. 14; Bless *et al.*, 1990). Field identification of such transverse faults with limited throws is not easy due to the lack of lithologic contrasts. However they are clearly marked in the sedimentary cover on both sides of the Stavelot Massif (see tectonic map of Knapp, 1978). For example, the Hockai fault can be easily connected with the Verviers Fault (Fourmarier & Kolatchevsky, 1933).

The Hockai fault zone (which may have experienced inverse movements in the past!) is still active as was illustrated by the seismic activity from October 1989 to April 1990 (fig. 14) and by the Malmédy earthquake ($M_1 = 2.5$) of May 12, 1985 (Camelbeeck, 1990). The hypocentral repartition and the fault plane solutions (fig. 15) indicate

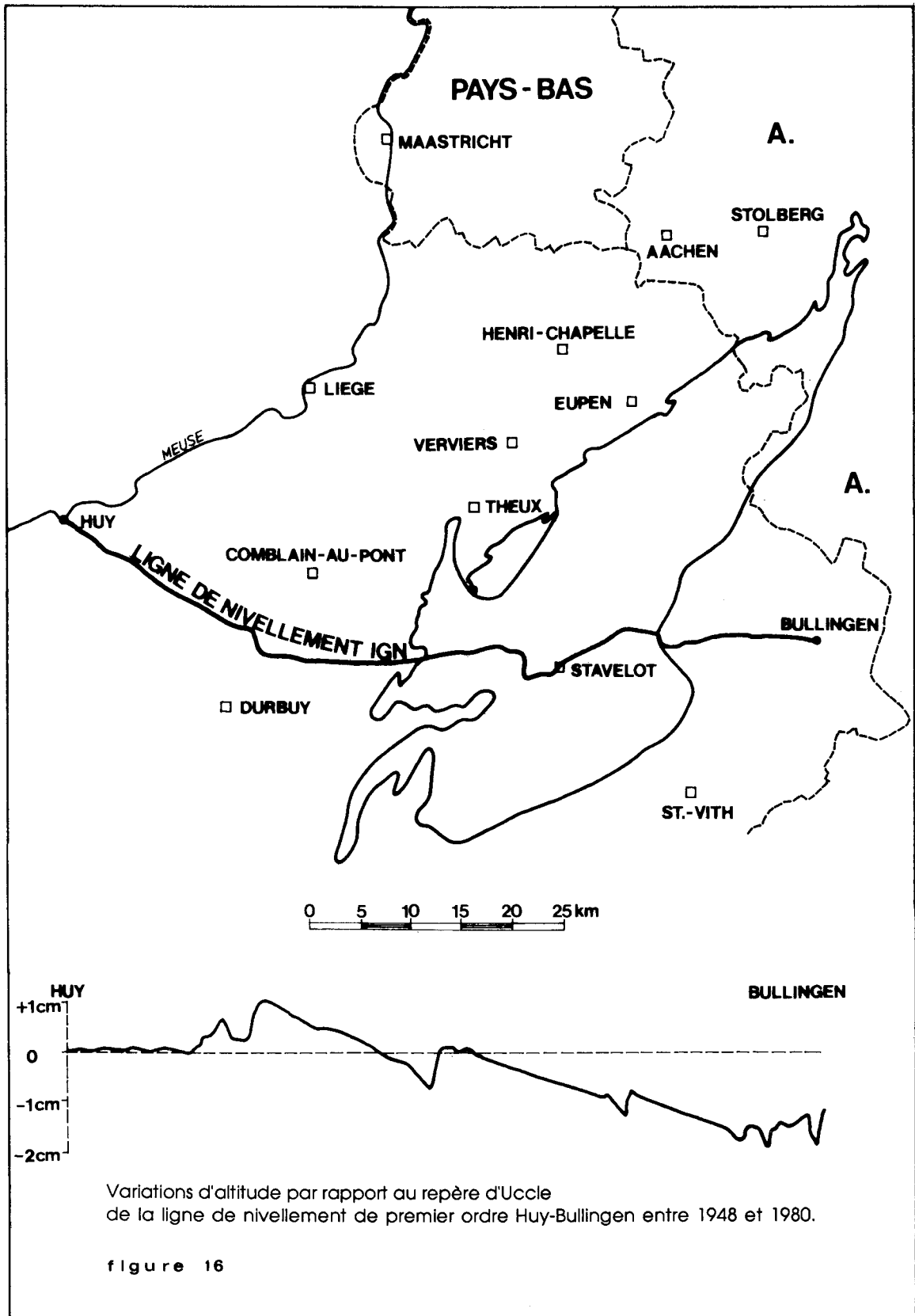
activity along a normal NW-SE fault with a 60° dip to the NE, parallel to the faults in the Lower Rhine Embayment.

CONTEMPORARY CRUSTAL MOVEMENTS

(A.P., A.D.)

Comparison of precise levellings made in 1892 and in 1948 shows that the Hautes Fagnes plateau had been uplifted between these two dates. The amount of the uplift was 103 mm near the upper Amblève region, which corresponds with a very high mean speed of 2 mm of uplift per annum. From 1948 to 1980 the same locations settled down by more than 30 mm. Such important movements are typical of very unstable tectonic places.

The levelling line between Huy and Bullingen shows several blocks systematically tilted to the east (fig. 16). The limits of these blocks correspond with lines detected by remote sensing, geomorphology or seismic profiles.



RESUME

L'histoire géologique connue du Massif de Stavelot commence au Cambrien inférieur avec les dépôts de Deville. Elle est marquée par des lacunes importantes qui reflètent l'influence des grands mouvements tectoniques calédonien, varisque et alpin (fig. 17). Aujourd'hui cette histoire continue. Cela est démontré par le dépôt de tourbe, par les activités sismiques actuelles et par des variations d'altitude importantes pendant les dernières décades.

BIBLIOGRAPHY

- ALBERS, H.J. & FELDER, W., 1981. Feuersteine als Indikatoren der Quantifizierung und Datierung der Karbonatlösung am Nordwest-Rand des Rheinischen Schildes. *Staringia*, 6: 18-22.
- ALBRECHT, J.C.H. & VALK, W., 1943. Oligozäne Invertebraten von Süd-Limburg. *Meded. Geol. Stichting*, Serie C-IV-1, 3: 163 p.
- BASTIN, B., 1985. Etude palynologique d'une couche de tourbe mise au jour dans le «rempart» d'une «palse» de la Konnerzvenn. *Hautes Fagnes*, 179: 72-73.
- BASTIN, B., JUVIGNE, E., PISSART, A. & THOREZ, J., 1974. Etude d'une coupe dégagée à travers un rempart d'une cicatrice de pingo de la Brackvenn. *Ann. Soc. géol. Belg.*, 97: 341-358.
- BETZ, D., DURST, H. & GUNDLACH, T., 1988. Deep structural seismic reflection investigations across the northeastern Stavelot-Venn Massif. *Ann. Soc. géol. Belg.*, 111: 217-228.
- BLESS, M.J.M. & STREEL, M., 1976. The occurrence of reworked miospores in a Westphalian C microflora from South Limburg (the Netherlands) and its bearing on paleogeography. *Meded. Rijks Geol. Dienst*, N.S. 27 (1): 1-39.
- BLESS, M.J.M. & PAPROTH, E., 1989. Diachronism and tripartition of peat accumulation in paralic paleoenvironments, Carboniferous and Cenozoic sequences in northwestern Europe. *Int. J. Coal Geol.*, 12: 349-364.
- BLESS, M.J.M., DEMOULIN, A., FELDER, P.J., JAGT, J.W.M. & REYNDERS, J.P.H., 1990. The Hautes Fagnes area (NE Belgium) as a monadnock during the Late Cretaceous. *Ann. Soc. géol. Belg.*, 113.
- BOUCOT, A.J., 1960. Lower Gedinnian Brachiopods of Belgium. *Mém. Inst. Géol. Univ. Louvain*, 21: 281-324.
- BOUILLENNE, R. & BOUILLENNE, M., avec la collaboration de DEFOSSEZ, S., DUBOIS, C., DAMBLON, J. & WILLIAM, A., 1939. Les viviers du plateau de la Baraque Michel. *Bull. Soc. roy. Sc. de Liège*, 12: 404-427.
- CAMELBEECK, T., 1990. L'activité sismique actuelle (1985-1988) en Belgique. Comparaison avec les données de sismicité historique et instrumentale. Analyse séismotectonique. *Ann. Soc. géol. Belg.*, 113.
- CARLS, P., 1977. Spain. In: A. MARTINSSON (ed.): The Silurian-Devonian boundary. *IUGS*, Series A, 5: 143-158.
- DALIMIER, I., DAMBLON, F., SCHUMACKER-LAMBRY, J., SCHUMACKER, R. & STREEL, M., 1985. Etude de l'évolution récente de la végétation dans la fagne de Clefay, par l'analyse pollinique des «cespites» de linaigrettes et de molinies. *Hautes Fagnes*, 1985 (3), 179: 89-90.
- DAMBLON, F., 1978. Etude paléo-écologique de tourbières en haute Ardenne. *Ministère de l'Agriculture, Administration des Eaux et Forêts, Service de Conservation de la Nature*, 10: 145 p.
- DEJONGHE, L., GRAULICH, J.M. & HANCE, L., 1989. Les enseignements d'une campagne sismique conduite entre Liège et Verviers. *Bull. Soc. belge Géol.*, 98: 29-36.
- DE MAGNEE, I. & NAIRN, A.E.M., 1962. La méthode paléomagnétique. Application au Poudingue de Malmédy. *Bull. Soc. belge Géol.*, 71: 551-565.
- DEMOULIN, A., 1987a. The distribution of Cretaceous deposits on the Hautes Fagnes plateau (Belgium). *Geol. Mijnbouw*, 66: 147-150.
- DEMOULIN, A., 1987b. Nouvelles observations sur les sables oligocènes des Hautes Fagnes (Belgique). *Ann. Soc. géol. Belg.*, 109: 473-480.
- DEMOULIN, A., 1988. Les terrasses de la Vesdre et la tectonique quaternaire sur le flanc nord du massif ardennais. *Ann. Soc. géol. Belg.*, 110: 209-216.
- DEMOULIN, A., 1989. Les transgressions oligocènes sur le massif Ardennais-Eifel. *Ann. Soc. géol. Belg.*, 112: 215-224.
- DIONNE, J.C., 1978. Formes et phénomènes périglaciaires en Jamésie, Québec subarctique. *Géogr. Phys. Quat.*, 32: 341-358.
- DUMONT, A., 1832. Mémoire sur la constitution géologique de la province de Liège. Bruxelles.
- DURST, H., 1985. Interpretation of a reflection-seismic profile across the northeastern Stavelot-Venn Massif and its northern foreland. *N. Jb. Geol. Paläont. Abh.*, 171: 441-446.
- ECHLE, W., PLUEGER, W.L., ZIELINSKI, J., FRANK, B. & SCHEPS, V., 1985. Petrography, mineralogy, and geochemistry of the Salmian rocks from borehole Konzen-1, Northern Eifel. *N. Jb. Geol. Paläont. Abh.*, 171.
- FELDER, W.M., BOSCH, P.W. & BISSCHOPS, J.H., 1984. Geologische kaart van Zuid-Limburg en omgeving, Pre-Kwartair. *Rijks Geol. Dienst*, Haarlem, ISBN 90-12-04846-X.
- FOURMARIER, P., 1901-1969. More than 40 papers concerning the Paleozoic geology and tectonics of the Belgian Ardennes have been published by Fourmarier between 1901 and 1969. Many of these appeared in the *Ann. Soc. Géol. Belgique* (vol. 28 to 92). For a list of references, see P. Michot (1988), cited here below.
- FOURMARIER, P. & KOLATCHEVSKY, V., 1933. Faille de Dison et faille de Verviers. *Ann. Soc. géol. Belg.*, LVI (4): 887-892.
- GEUKENS, F., 1957. Les failles bordières du Graben de Malmédy. *Bull. Soc. belge Géol.*, 66: 71-81.
- GEUKENS, F., 1959. Het pseudotektonisch venster van Theux. *Meded. Kon. Vlaamse Acad. Wetensch., kl. Wetensch.*, 3: 15-30.
- GEUKENS, F., 1986. Commentaire à la carte géologique du Massif de Stavelot. *Aardkundige Meded. Leuven*, 3: 15-30.
- GEWELT, M., 1983. Nouvelle datation ¹⁴C d'une couche de tourbe d'une butte périglaciaire fossile de la Konnerzvenn (Hautes Fagnes, Belgique). *Ann. Soc. géol. Belg.*, 106: 331-333.
- GODEFROID, J., 1982. Gedinnian lithostratigraphy and biostratigraphy of Belgium, historical subdivisions and brachiopod biostratigraphy, a synopsis. *Cour. Forsch. Inst. Senckenberg*, 55: 97-134.
- GRAULICH, J.M., 1951. Sédimentologie des poudingues gedinniens au pourtour du Massif de Stavelot. *Ann. Soc. géol. Belg.*, 74: B163-186.
- GRAULICH, J.M., 1975. Le sondage de Bolland. *Serv. Géol. Belgique, Prof. Paper*, 1975 (9): 38 p.
- GRAULICH, J.M., 1984. Coupe géologique passant par les sondages de Hermalle-sous-Argenteau, Bolland, Soumagne, Soiron, Pépinster 2 et 1 et Jusleville. *Commentaires. Soc. belge Géol.*, 93: 45-49.
- GULLENTOPS, F., 1987. The Maastrichtian sea level rise. *Ann. Soc. géol. Belg.*, 109: 363-365.
- GULLENTOPS, F., 1988. Waarheen met het Tongrien? *Bull. Soc. belge Géol.*, 96: 357-368.
- HAHNE, G. & SEIDEL, G., 1936. Die Schüttung der unternamurischen Konglomerate des Indegebietes bei Aachen. *Ztschr. deutsch. geol. Ges.*, 88: 564-572.
- HANCE, L., DEJONGHE, L., GRAULICH, J.M. & STEEMANS, Ph., 1989. Géologie de l'autoroute E42 Verviers Saint-Vith à Heusy et à Ensville. *Serv. Géol. Belgique, Prof. Paper*, 237.
- HINSBERG, V.W.M., JANSSEN, A.W. & VAESSEN, L.M.B., 1973. Een profiel door Oligocene en Kwartair afzettingen ten westen van het dorp Kleine Spouwen (Belgie; provincie Limburg). *Meded. Werkgr. Tert. Kwart. Geol.*, 10 (1): 9-28.
- KLEIN, Cl., 1977a. La limite méridionale de la Fenêtre de Theux. *C.R. Acad. Sci. Paris*, 284 (D): 425-428.
- KLEIN, Cl., 1977b. L'intérêt tectogénique de la Fenêtre de Theux. *C.R. Acad. Sci. Paris*, 294 (D): 1155-1158.
- KNAPP, G., 1978. Geologische Karte der nördlichen Eifel 1/100.000. *Geol. Landesamt Nordrhein-Westfalen*.
- KRAMM, U. & BUHL, D., 1985. U-Pb Zircon dating of the Hill tonalite, Venn-Stavelot Massif, Ardennes. *N. Jb. Geol. Paläont. Abh.*, 171: 329-37.

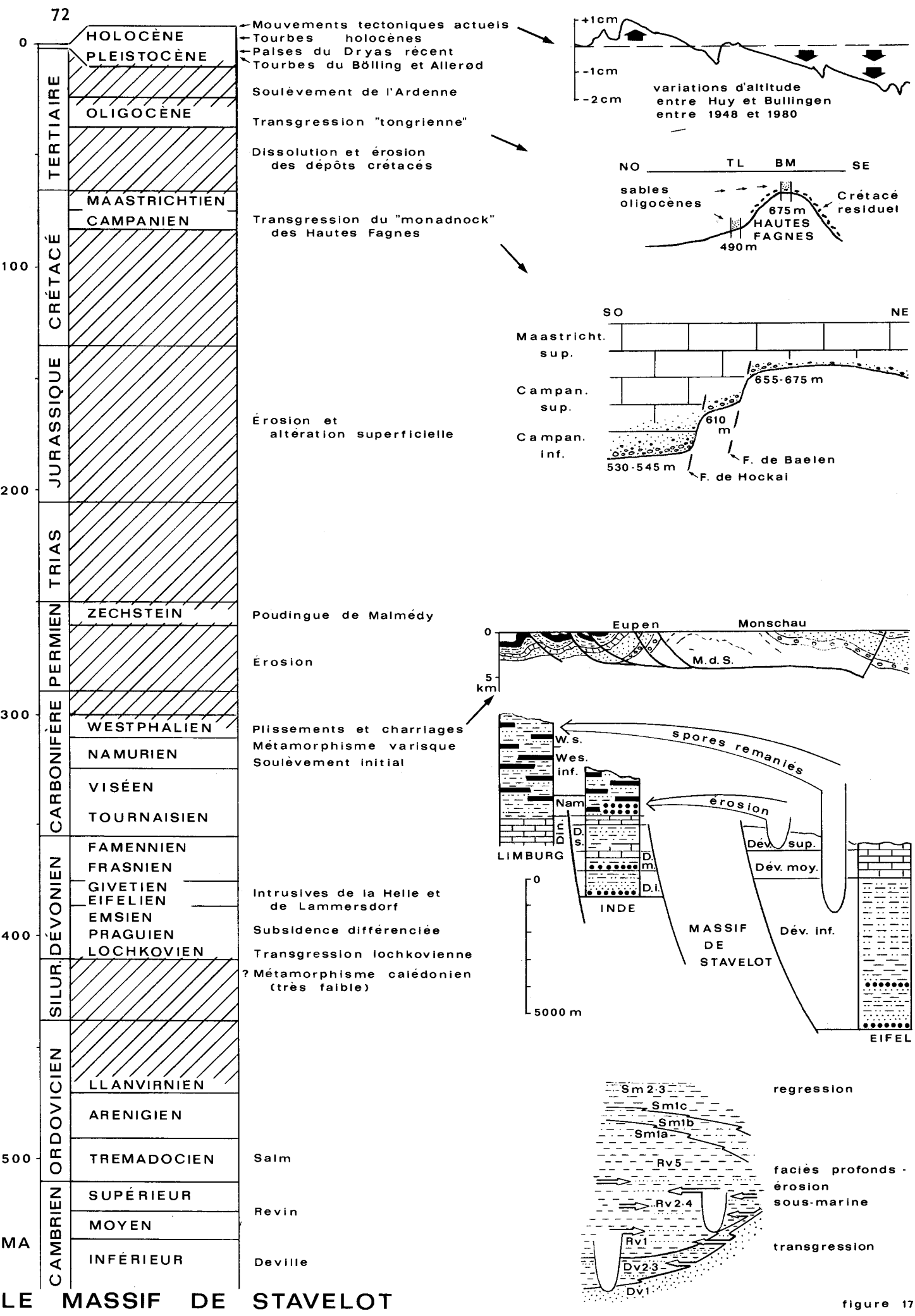


figure 17

- KRAMM, U., BUHL, D. & CHERNYSHEV, I.V., 1985a. Caledonian or Variscan metamorphism in the Venn-Stavelot Massif, Ardennes? Arguments from a K-Ar and Rb-Sr study. *N. Jb. Geol. Paläont. Abh.*, 171: 339-349.
- KRAMM, U., SPAETH, G. & WOLF, M., 1985b. Variscan Metamorphism in the NE Stavelot-Venn Massif, Ardennes: A new Approach to the Question of Regional Dynamothermal or Contact Metamorphism. *N. Jb. Geol. Paläont. Abh.*, 171: 311-327.
- KUYL, O.S., 1980. Toelichtingen bij de geologische kaart van Nederland 1/50.000, blad Heerlen (62 W oostelijke helft, 62 O westelijke helft). *Rijks Geol. Dienst*, Haarlem, 206 p.
- LECLERCO, S., 1940. Contribution à l'étude de la flore du Dévonien de la Belgique. *Acad. roy. Belgique, Cl. Sc., Mém.*, in 4^e, 2de ser., 12 (3): 1-65.
- LECLERCO, S. & ANDREWS, H.N., 1960. *Calamophyton bicephalum*, a new species from the Middle Devonian of Belgium. *Ann. Mo. bot. Garden*, 47: 1-23.
- LECLERCO, S. & BONAMO, P.M., 1971. A study of the fructification of *Milleria (Protopteridium) thomsonii* Lang from the Middle Devonian of Belgium. *Palaeontographica B*, 136: 83-144.
- LECOMPTE, M., 1967. Le Dévonien de la Belgique et le Nord de la France. In: OSWALD, D.H. (ed.), International Symposium on the Devonian System, Calgary 1967, 1: 15-52.
- LELE, K.M. & STREEL, M., 1969. Middle Devonian (Givetian) plant microfossils from Goé (Belgium). *Ann. Soc. géol. Belg.*, 92: 89-121.
- LESSUISE, A. & FAIRON-DEMARET, M., 1980. Le gisement à plantes de Niaster (Aywaille, Belgique): Repère biostratigraphique nouveau aux abords de la limite Couvinien-Givetien. *Ann. Soc. géol. Belg.*, 103: 157-181.
- MACAR, P., 1954. L'évolution géomorphologique de l'Ardenne. *Bull. Soc. belge Géol.*, 78: 1-23.
- MAILLIEUX, E., 1931. Remarques sur les galets dévoniens du Poudingue de Malmédy. *Bull. Mus. Roy. Hist. Nat. Belg.*, 7 (15): 1-15.
- MEISSNER, R., BARTELSSEN, H. & MURAWSKI, H., 1980. Seismic reflection and refraction studies for investigating fault zones along the Geotransverse Rhenoherynykum. *Tectonophysics*, 64: 59-84.
- MEISSNER, R., BARTELSSEN, H. & MURAWSKI, H., 1981. Thin-skinned tectonics in the northern Rhenish Massif. *Nature*, 290: 399-401.
- MICHOT, J., FRANSSSEN, L. & LEDENT, D., 1973. Preliminary age measurements in metamorphic formations from the Ardennes anticline and the Brabant Massif (Belgium). *Fortschr. Mineral.*, 50 (3): 107-109.
- MICHOT, P., 1988. Le synclinorium de Herve. *Ann. Soc. géol. Belg.*, 110: 101-188.
- MULLENDERS, W. & GULLENTOPS, F., 1969. The age of the pingos of Belgium. In: The periglacial environment, T.L. PEWE (ed.). *Mc Gill-Queen's University Press*, (1): 3-61.
- NEUMANN-MAHLKAU, P., 1970. Sedimentation und Paläogeographie zur Zeit der Gedinne Transgression an Massif von Stavelot-Venn. *Geol. Mitt.*, 9: 311-356.
- OZER, A., 1982. Le Poudingue de Malmédy. Cercle cultural M.A. LIBERT de la région de Malmédy. *Spécial Poudingue*, 1982(2-3): 41-47.
- PERSCH, F. (coll. F. OVERBECK), 1950. Zur postglacialen Wald- und Moorentwicklung im Hohen Venn. *Decheniana*, 104: 81-93.
- PISSART, A., 1956. L'origine périglaciaire des viers des Hautes Fagnes. *Ann. Soc. géol. Belg.*, 88: 277-289.
- PISSART, A., 1983. Remnants of periglacial mounds in the Hautes Fagnes (Belgium): structure and age of the ramparts. *Geologie en Mijnbouw*, 62: 551-555.
- PISSART, A., 1985. Pingos et palses: un essai de synthèse des connaissances actuelles. *Inter-Nord*, 17: 21-32.
- PISSART, A. & JUVIGNE, E., 1980. Genèse et âge d'une trace de butte périglaciaire (pingo ou palse) de la Konnerzvenn (Hautes Fagnes, Belgique). *Ann. Soc. géol. Belg.*, 103: 73-86.
- RENIER, A., 1902. Le Poudingue de Malmédy. Essai géologique. *Ann. Soc. géol. Belg.*, 29: M145-223.
- RICHTER, D., 1985. Aachen und Umgebung, Nordeifel und Ardennen mit Vorland. Sammlung Geologischer Führer, 48 (Borntraeger, Berlin-Stuttgart): 302 p.
- ROBASZYNSKI, F. & DUPUIS, Ch., 1983. Belgique. Guides géologiques régionaux, Masson - Paris, ISBN 2-225-75394-6: 204 p.
- SCHREYER, W. & ABRAHAM, K., 1978. Prehnite/chlorite and actinolite/epidote bearing mineral assemblages in the metamorphic igneous rocks of la Helle and Challes, Venn-Stavelot Massif, Belgium. *Ann. Soc. géol. Belg.*, 101: 227-241.
- SCHUMACKER, R. & NOIRFALISE, A., 1979. Les Hautes Fagnes. Ed. Fédération du tourisme de la province de Liège et «Parc Naturel Hautes Fagnes - Eifel», 46 p.
- STEEMANS, Ph., 1989a. Paléogéographie de l'Eodévoniens ardennais et des régions limitopes. *Ann. Soc. géol. Belg.*, 112: 103-119.
- STEEMANS, Ph., 1989b. Etude palynostratigraphique du Dévonien inférieur dans l'Ouest de l'Europe. *Mém. Expl. Cartes Géol. Min. Belgique*, 27: 453 p.
- STREEL, M., 1959. Etude phytosociologique de la Fagné wallonne et de la Fagne de Clefay (Structure et évolution des associations végétales à Sphaignes dans les Hautes-Fagnes de Belgique). *Acad. roy. Belgique, Cl. Sci.*, Mém. Coll. in 8^e, 31 (1): 109 p.
- STRUVE, W., 1982. The Eifelian within the Devonian frame, history, boundaries, definitions. *Cour. Forsch. Inst. Senckenberg*, 55: 401-432.
- VAN DE LAAR, J.G.M. & FERMONT, W.J.J., 1989. Onshore Carboniferous palynology of the Netherlands. *Meded. Rijks Geol. Dienst*, 43 (1): 35-73.
- VANGUESTAINE, M., 1978. Critères palynologiques conduisant à la reconnaissance d'un pli couché Revinien dans le sondage de Grand-Halleux. *Ann. Soc. géol. Belg.*, 100: 249-276.
- VANGUESTAINE, M., 1985. Données palynologiques nouvelles sur le sous-sol du plateau des Hautes Fagnes dans le contexte géologique du massif de Stavelot. *Hautes Fagnes*, 50 (180): 4-5.
- VANGUESTAINE, M., 1986. Progrès récents de la stratigraphie par Acritarches du Cambro-Ordovicien d'Ardenne, d'Irlande, d'Angleterre, du Pays de Galles et de Terre-Neuve orientale. *Ann. Soc. Géol. Nord*, 105: 65-76.
- VANGUESTAINE, M. & VAN LOOY, J., 1983. Acritarches du Cambrien moyen de la vallée de Tacheddirt (Haut-Atlas, Maroc) dans le cadre d'une nouvelle zonation du Cambrien. *Ann. Soc. géol. Belg.*, 106: 69-85.
- VAN WAMBEKE, L., 1956. La minéralisation des tonalites de la Helle et de Lammersdorf et leurs relations avec les autres minéralisations. *Bull. Soc. belge Géol.*, 64 (3): 534-581.
- VON HOEGEN, J., LEMME, B., ZIELINSKI, J. & WALTER, R., 1985. Cambrian and Lower Ordovician in the Stavelot-Venn Massif, a model for depositional history. *N. Jb. Geol. Paläont. Abh.*, 171: 217-235.
- WALTER, R., 1980. Lower Paleozoic paleogeography of the Brabant Massif and its southern adjoining areas. *Meded. Rijks Geol. Dienst*, 32: 14-25.
- WALTER, R. & WOHLBERG, J. (eds), 1985. Geology and geophysics of the northeastern Hohes Venn area; report on a joint geoscientific venture. *N. Jb. Geol. Paläont. Abh.*, 171: 467 p.
- WALTER, R., SPAETH, G. & KASIG, W., 1985. An outline of the geological structure of the northeastern Hohes Venn area and its northern foreland. *N. Jb. Geol. Paläont. Abh.*, 171: 207-116.
- WEIS, D., DEJONGHE, L. & HERBOSCH, A., 1980. Les associations des minéraux opaques et semi-opaques de la roche ignée de la Helle. *Ann. Soc. géol. Belg.*, 103: 15-23.