

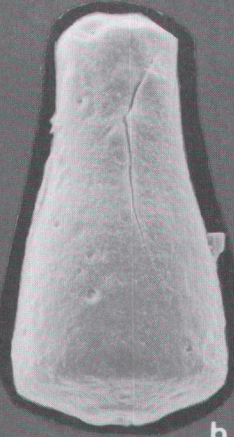
Plate 1

- a. *Bursachitina* sp. A Sutherland, 1994:
L = 130 μm ; D = 70 μm ; d = 43 μm ;
DS-027-99/514 Ch 17
- b. *Bursachitina* sp. A Sutherland, 1994:
L = 80 μm ; D = 72 μm ; d = 40 μm ;
DS-027-99/514 Ch 17
- c. *Desmochitina opaca*? Laufeld, 1974:
L = 210 μm ; D = 120 μm ; DS-036-99 Ch 6
- d. *Cingulochitina burdinalensis* Verniers, 1999:
L = 160 μm ; D = 150 μm ;
DS-038-99/C Ch 2
- e. *Cingulochitina burdinalensis* Verniers, 1999:
L = 108 μm ; D = 102 μm ;
DS-038-99/A Ch 3
- f. *Cingulochitina burdinalensis* Verniers, 1999:
L = 137 μm ; D = 138 μm ;
DS-038-99/A Ch 12
- g. *Cingulochitina burdinalensis* Verniers, 1999:
L = 140 μm ; D = 128 μm ;
DS-038-99/B Ch 1
- h. *Cingulochitina cingulata* Eisenack, 1937:
L = 78 μm ; B = 50 μm ; d = 30 μm ;
DS-027-99/607 Ch 1
- i. *Cingulochitina cingulata* Eisenack, 1937:
L = 92 μm ; B = 60 μm ; d = 40 μm ;
DS-027-99/607 Ch 21
- j. *Cingulochitina cingulata* Eisenack, 1937:
L = 87 μm ; B = 55 μm ; d = 30 μm ;
DS-027-99/514 Ch 1
- k. *Cingulochitina cingulata* Eisenack, 1937:
L = 90 μm ; B = 58 μm ; d = 45 μm ;
DS-055-99 Ch 14
- l. *Cingulochitina cingulata* Eisenack, 1937: example
of chain of two specimens;
L = 78 μm ; B = 55 μm ;
DS-055-99 Ch 19

PLATE 1



a



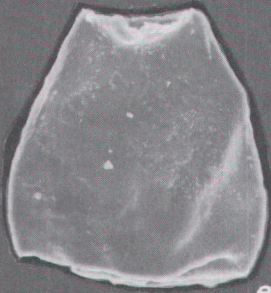
b



c



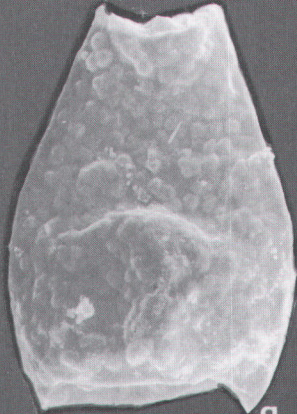
d



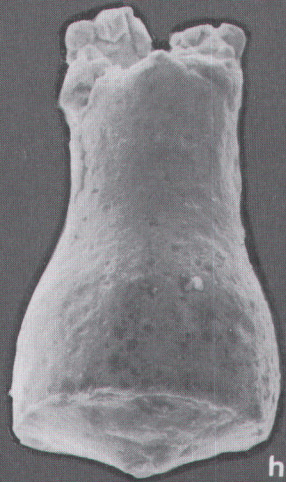
e



f



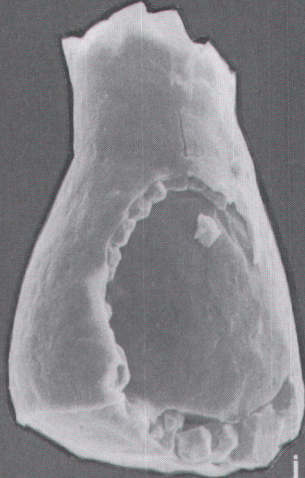
g



h



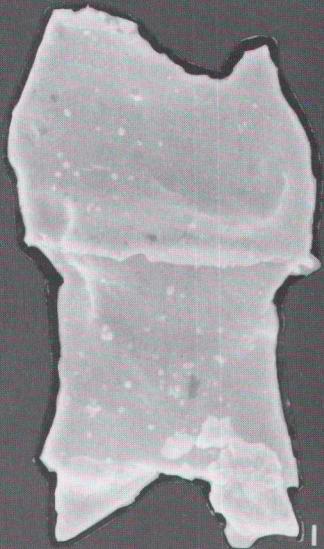
i



j



k



l

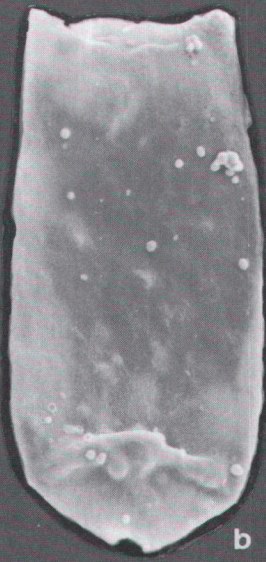
Plate 2

- a. *Cingulochitina dreyensis* Verniers, 1999:
L = 146 μm ; D = 68 μm ; DS-036-99 Ch 4
- b. *Cingulochitina dreyensis* Verniers, 1999:
L = 164 μm ; D = 65 μm ; DS-036-99 Ch 3
- c. *Cingulochitina dreyensis* Verniers, 1999:
L = 146 μm ; D = 68 μm ; DS-034-99 Ch 1
- d. *Cingulochitina dreyensis* Verniers, 1999:
L = 146 μm ; D = 68 μm ; DS-033-99/608 Ch 39
- e. *Cingulochitina pitetensis* Verniers, 1999:
L = 162 μm ; D = 51 μm ; DS-037-99/610 Ch 18
- f. *Margachitina margaritana* Eisenack, 1937:
L = 100 μm ; D = 92 μm ; DS-036-99 Ch 1
- g. *Margachitina margaritana* Eisenack, 1937:
L = 100 μm ; D = 72 μm ; DS-036-99 Ch 22
- h. *Eisenackitina anulifera* Verniers, 1999:
L = 146 μm ; D = 112 μm ; DS-037-99/608 Ch 34
- i. *Eisenackitina anulifera* Verniers, 1999:
L = 160 μm ; D = 132 μm ; d = 60 μm ;
DS-037-99/469 Ch 17
- j. *Eisenackitina causiata* Verniers, 1999:
L = 117 μm ; D = 113 μm ; DS-037-99 Ch 23
- k. *Eisenackitina anulifera* Verniers, 1999:
L = 170 μm ; D = 107 μm ; d = 58 μm ;
DS-037-99/469 Ch 14
- l. *Salopochitina bella* Swire, 1990:
L = 160 μm ; D = 132 μm ; DS-038-99/B
- m. *Salopochitina bella* Swire, 1990: detail of the
appendix; DS-038-99/B

PLATE 2



a



b



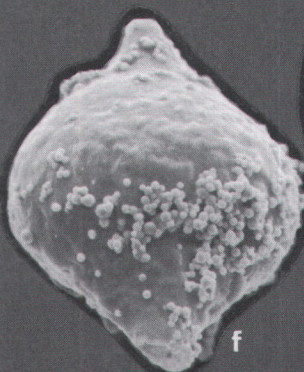
c



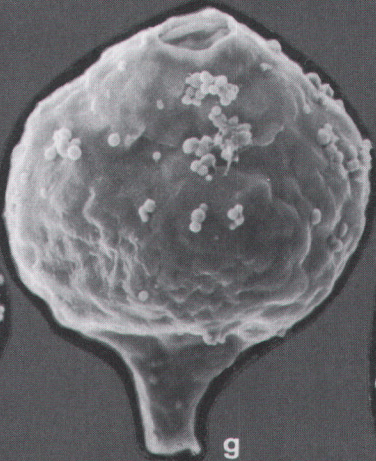
d



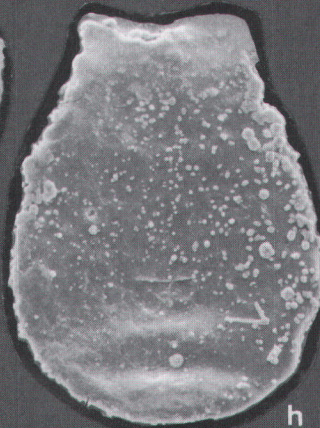
e



f



g



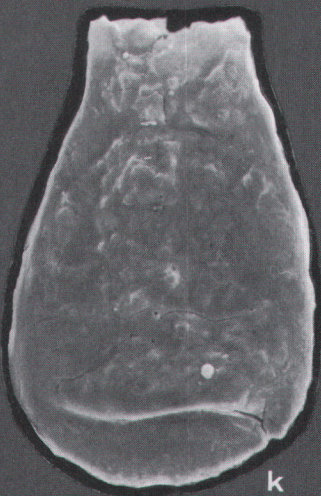
h



i



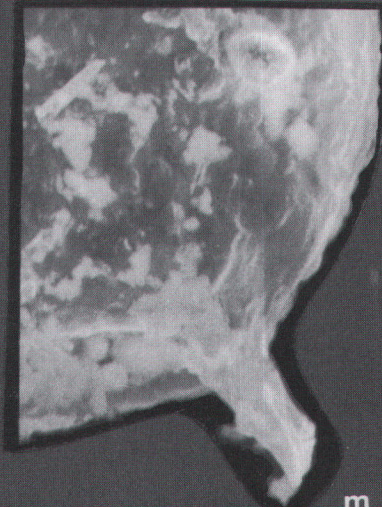
j



k



l



m

Plate 3

- a. *Conochitina acuminata* Eisenack, 1959:
L = 167 μm ; D = 74 μm ; d = 56 μm ;
DS-037-99/610 Ch 31
- b. *Conochitina acuminata* Eisenack, 1959:
L = 170 μm ; D = 60 μm ; d = 50 μm ;
DS-035-99/A Ch 6
- c. *Conochitina acuminata* Eisenack, 1959:
L = 160 μm ; D = 50 μm ; d = 45 μm ;
DS-037-99/B Ch 21
- d. *Conochitina claviformis* Eisenack, 1931:
L = 340 μm ; D = 72 μm ; DS-026-99 Ch 15
- e. *Conochitina claviformis* Eisenack, 1931:
L = 130 μm ; D = 77 μm ; DS-027-99:607 Ch 15
- f. *Conochitina fortis* Nestor, 1994:
L = 165 μm ; D = 83 μm ; d = 69 μm ;
DS-026-99 Ch 2
- g. *Conochitina fortis* Nestor, 1994:
L = 122 μm ; D = 67 μm ; d = 53 μm ;
DS-055-99 Ch 10
- h. *Conochitina fortis* Nestor, 1994: detail of the ornamentation on the tegument;
DS-025-99 Ch 2
- i. *Conochitina* aff. *fortis* Nestor, 1994:
L = 83 μm ; D = 50 μm ; DS-027-99/607 Ch 12
- j. *Conochitina proboscifera* Eisenack, 1937:
L = 170 μm ; D = 65 μm ; L_{mucron} = 15 μm ;
DS-037-99/610 Ch 4
- k. *Conochitina proboscifera* Eisenack, 1937:
L = 216 μm ; D = 77 μm ; L_{mucron} = 10 μm ;
DS-037-99/610 Ch 27
- l. *Conochitina proboscifera* Eisenack, 1937:
L = 170 μm ; D = 68 μm ; DS-035-99/B Ch 5
- m. *Conochitina subcyatha* Nestor, 1982:
L = 185 μm ; D = 60 μm ;
DS-027-99/514 Ch 16æ.

PLATE 3

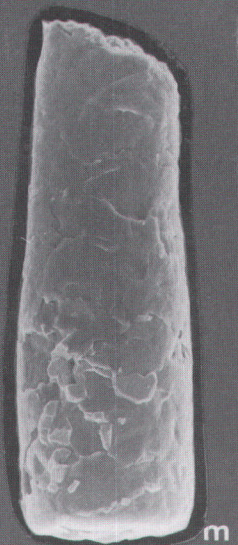
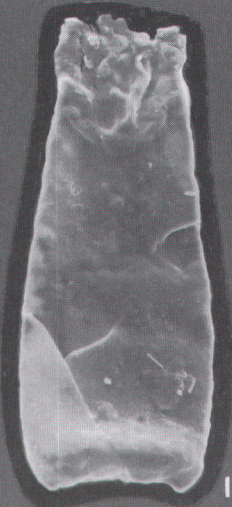
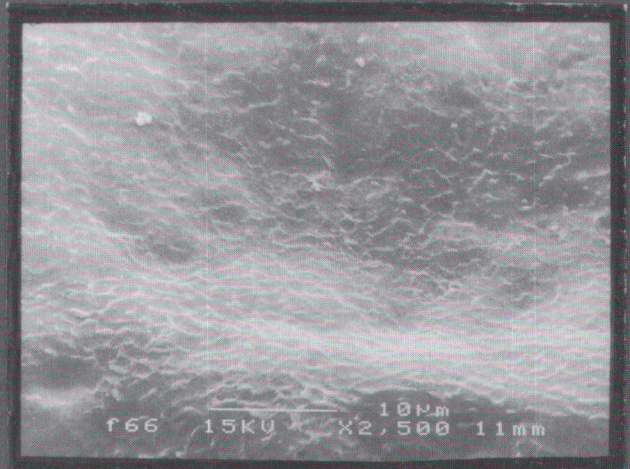
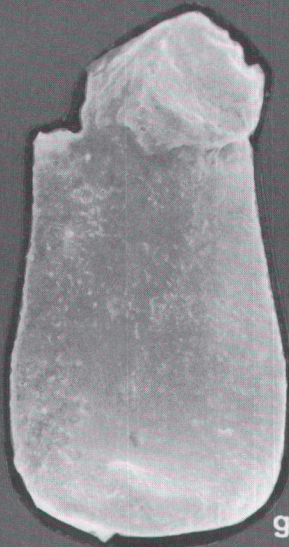
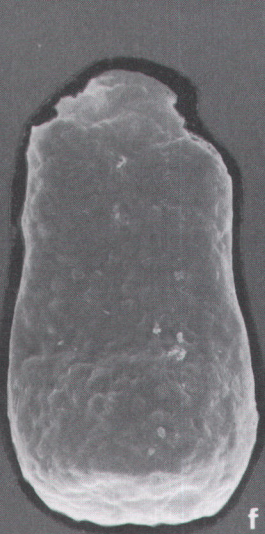
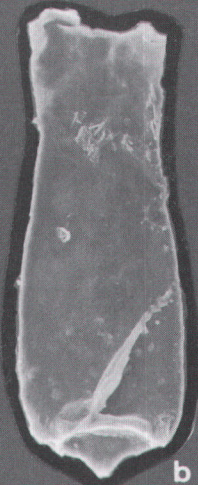


Plate 4

- a. *Conochitina truncata*:
L = 305 μm ; D = 115 μm ; DS-038-99/C Ch 1
- b. *Conochitina truncata*:
L = 340 μm ; D = 90 μm ; DS-033-99/608 Ch 27
- c. *Conochitina tuba* Eisenack, 1932:
L = 220 μm ; D = 80 μm ; DS-026-99 Ch 1
- d. *Conochitina tuba* Eisenack, 1932:
L = 197 μm ; D = 102 μm ; DS-033-99/608 Ch 15
- e. *Conochitina* aff. *fortis* Eisenack, 1932 in Paris, 1981:
L = 170 μm ; D = 105 μm ; DS-037-99/469 Ch 8
- f. *Sphaerochitina jaegeri* nomen nudum in Pittau, 1998:
L = 155 μm ; D = 68 μm ; d = 30 μm ;
DS-037-99/610 Ch 6
- g. *Sphaerochitina jaegeri* nomen nudum in Pittau, 1998:
L = 107 μm ; D = 56 μm ; d = 20 μm ;
DS-027-99/514 Ch 4
- h. *Sphaerochitina serpaglii* nomen nudum in Pittau, 1998:
L = 92 μm ; D = 65 μm ; d = 25 μm ;
DS-027-99/607 Ch 2
- i. *Sphaerochitina serpaglii* nomen nudum in Pittau, 1998:
L = 85 μm ; D = 54 μm ; d = 20 μm ;
DS-027-99/607 Ch 5
- j. *Sphaerochitina* sp. B in Verniers, 1982:
L = 93 μm ; D = 62 μm ; d = 20 μm ;
DS-042-99/609 Ch 2
- k. *Vitreachitina* sp. 2 in Nestor, 1994:
L = 97 μm ; D = 68 μm ; d = 46 μm ;
DS-042-99/609 Ch 4
- l. *Vitreachitina* sp. 2 in Nestor, 1994:
L = 100 μm ; D = 61 μm ; d = 40 μm ;
DS-042-99/609 Ch 5