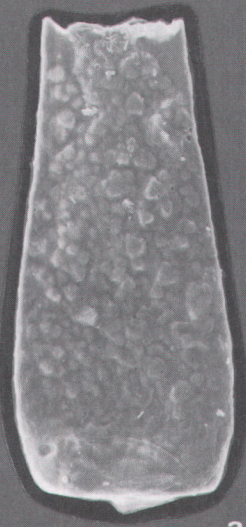


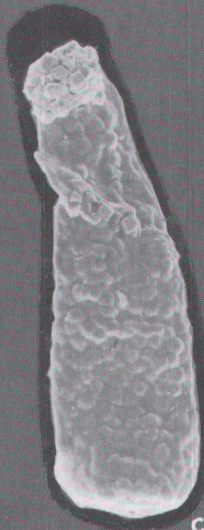
PLATE 4



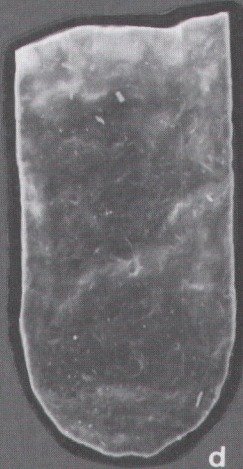
a



b



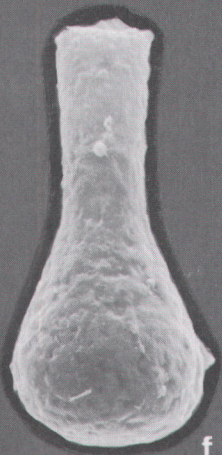
c



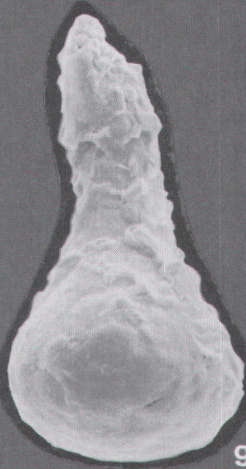
d



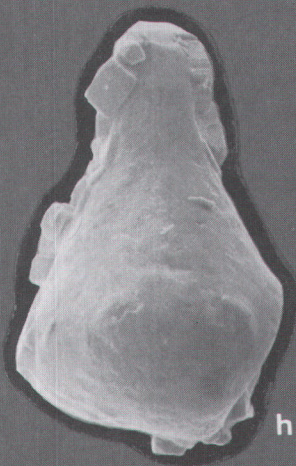
e



f



g



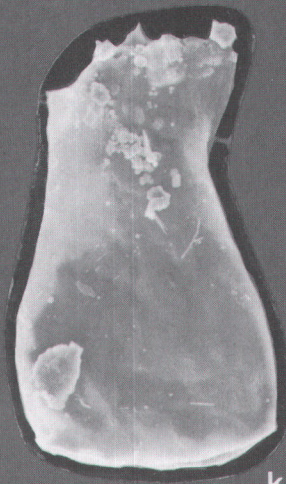
h



i



j



k



l

Plate 5

- a. *Angochitina longicollis* Eisenack, 1959:
L = 150 μm ; D = 68 μm ; d = 38 μm ;
DS-037-99/469 Ch 2
- b. *Angochitina longicollis* Eisenack, 1959: detail
stekels (max. 5 μm); DS-037-99/469 Ch 30
- c. *Angochitina longicollis* Eisenack, 1959:
L = 173 μm ; D = 80 μm ; d = 40 μm ;
DS-033-99/608 Ch 8
- d. *Angochitina longicollis* Eisenack, 1959:
L = 200 μm ; D = 70 μm ; d = 37 μm ;
DS-033-99/608 Ch 10
- e. *Ancyrochitina ancyrea* ? Eisenack, 1931:
L = 120 μm ; D = 79 μm ; d = 40 μm ;
DS-037-99/610 Ch 29
- f. *Ancyrochitina ancyrea* ? Eisenack, 1931:
L = 75 μm ; D = 65 μm ; d = 30 μm ;
DS-027-99/514 Ch 20
- g. *Ancyrochitina ancyrea* ? Eisenack, 1931:
L = 50 μm ; D = 55 μm ; d = 24 μm ;
DS-027-99/514 Ch 11
- h. *Ancyrochitina ancyrea* ? Eisenack, 1931: detail of
broken appendix;
DS-037-99/610 Ch 29
- i. Leiosphere:
L = 158 μm ; D = 132 μm ; DS-027-99/514 Ch 22
- j. Leiosphere:
L = 160 μm ; D = 130 μm ; DS-025-99 Ch 5

PLATE 5

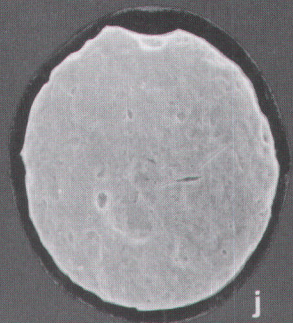
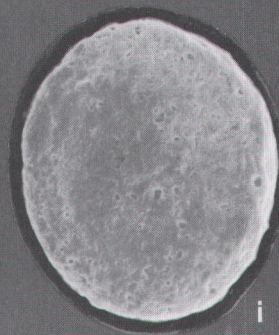
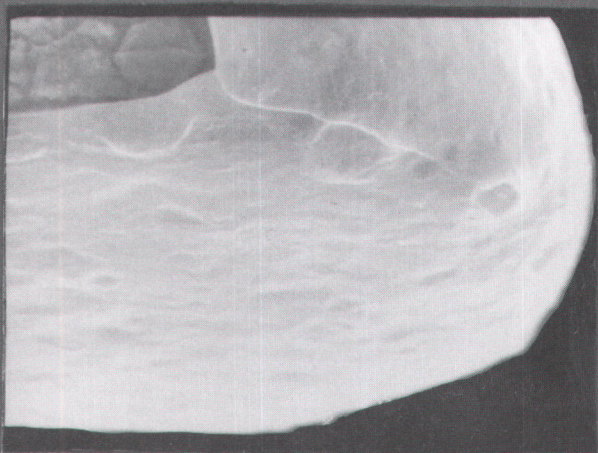
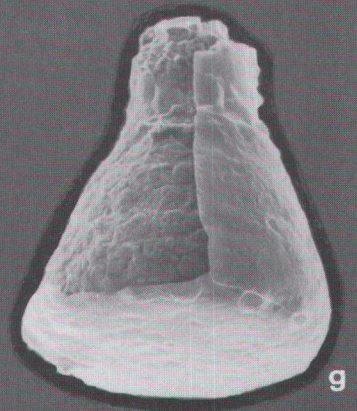
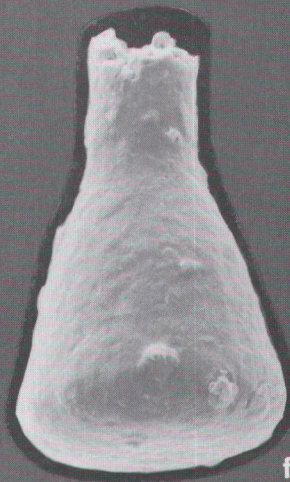
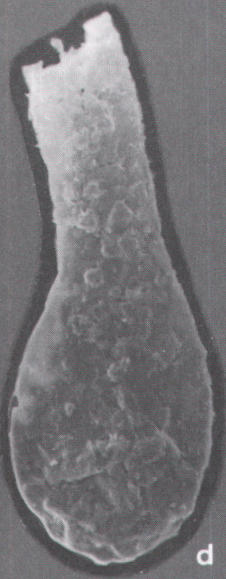
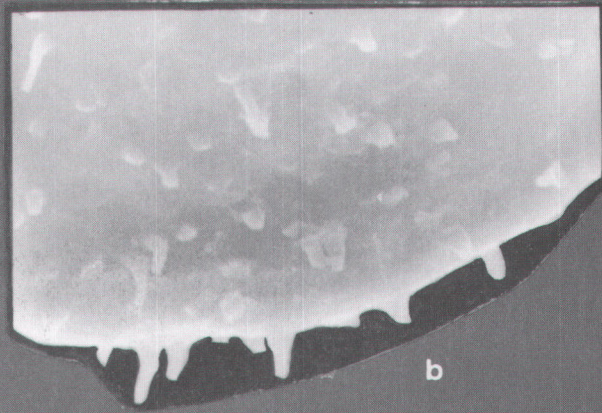
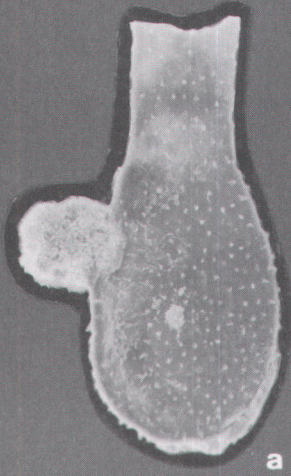
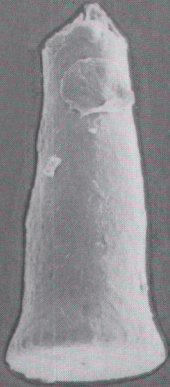


Plate 6

Basse-aux-Canes and Vittrival-Bruyère formations

- a. *Belenochitina capitata*, bb33.2, 99/0539A, 2, 0598, 400x
- b. *Conochitina dolosa*, bb33.2, 99/0539A, 2, 0575, 110x
- c. *Laufeldochitina stentor*, bb40.3, 99/0493, 2, 0372, 140x
- d. *Desmochitina typica?*, bb40.7, 99/0501, 2, 0400, 600x
- e. *Cyanthochitina campanulaeformis*, bb40.5, 99/0508, 2, 0324, 290x
- f. *Cyanthochitina calix*, bb40.5, 99/0508-2, 2, 160x
- g. *Laufeldochitina stentor*, bb40.3, 99/0493, 2, 0369, 100x
- h. Chain of two *Desmochitina cocca*, bb40.5, 99/0508-2, 2, 350x
- i. Chain of five *Desmochitina cocca*, bb40.9, 99/0495A, 1, 0222, 290x
- j. *Belenochitina robusta*, bb40.7, 99/0501, 2, 0403, 290x
- k. detail of spines of *Belonechitina robusta*, (6.10), 1500x

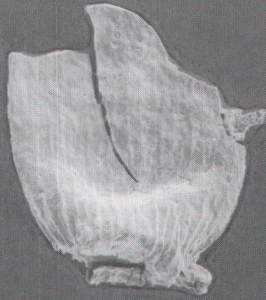
PLATE 6



a



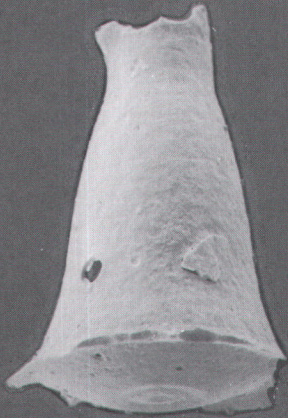
b



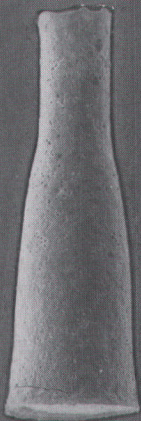
c



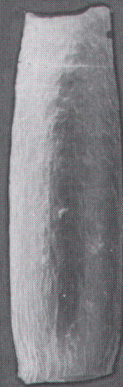
d



e



f



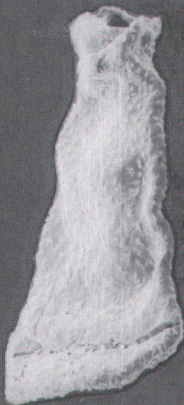
g



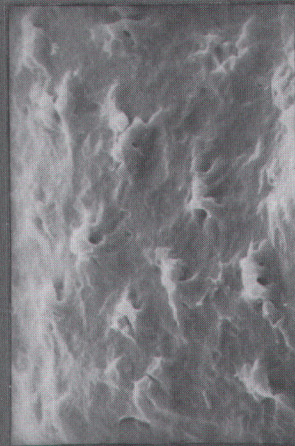
h



i



j



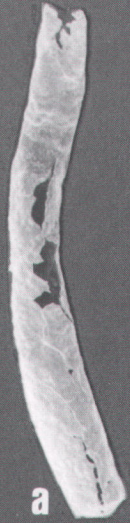
k

Plate 7

Fosses & Génicot formations

- a. *Tanuchitina bergstroemi*, bb40.13, 99/0497A, 1, 0270, 140x
- b. *Conochitina minnesotensis*, bb40.13, 99/0497A, 1, 0252, 175x
- c. *Spinachitina taugourdeau?*, bb33.3, 1, 0183, 210x
- d. *Spinachitina bulmani*, bb33.3, 99/0448, 1, 0172, 290x
- e. *Cyathochitina jenkinsi?*, bb33.5, 99/0449, 1, 0118, 290x
- f. *Conochitina rugata*, bb33.5, 99/0449, 1, 0127, 235x
- g. *Cyathochitina jenkinsi?*, bb33.5, 99/0449, 1, 0130, 200x
- h. *Armoricochitina nigerica*, bb15.6, 99/0579B, 2, 0633, 350x
- i. *Armoricochitina nigerica*, f54, bb33.12, nr. 54, 650x
- j. *Conochitina rugata*, f24, bb33.6, nr. 5, 350x
- k. *Conochitina rugata*, f26, bb33.6, nr. 11, 350x
- l. *Conochitina rugata*, f29, bb33.6, nr. 21, 400x
- m. *Belonechitina* spp., f68, bb 3/4/2000B, nr. 18, 500x
- n. *Belonechitina robusta*, bb15.6, 99/0579B, 2, 0624, 290x
- o. *Conochitina* spp., f47, bb33.12, nr.19, 300x
- p. *Belonechitina* spp., f56, bb33.12, nr.57, 400x
- q. *Desmochitina minor*, f40, bb33.12, nr.2, 850x
- r. *Sphaerochitina* spp., f71, bb3/4/2000B, nr.24, 400x
- s. *Sphaerochitina* spp., f65, bb3/4/2000B, nr.15, 850x
- t. *Hercochitina cf gamachiana* f52, bb33.12, nr.41, 850x
- u. *Conochitina* spp., f60, bb3/4/2000B, nr.2, 850x

PLATE 7



a



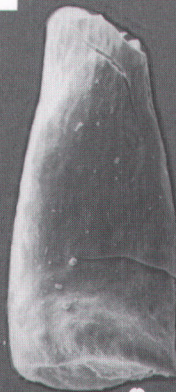
b



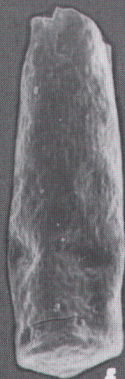
c



d



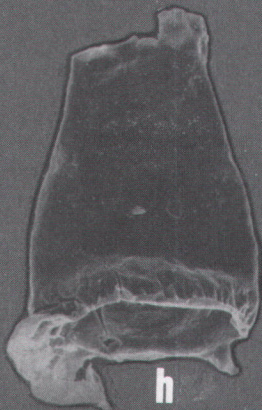
e



f



g



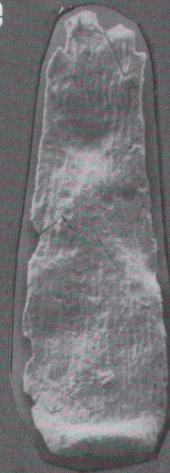
h



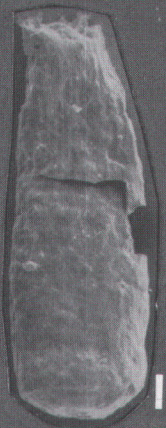
i



j



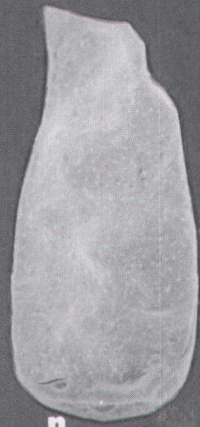
k



l



m



n



o



p



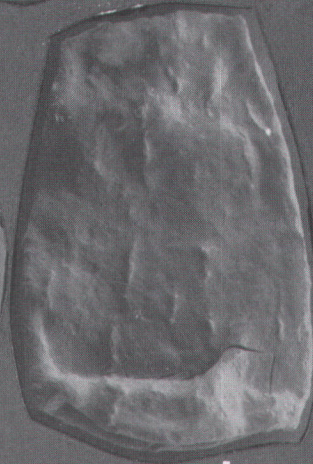
q



r



s



t



u

Plate 8

Génicot Formation

- a. *Ancyrochitina* spp., f32, bb33.11a, nr.4, 1200x
- b. *Conochitina* spp., f36, bb33.11b, nr.7, 650x
- c. *Eisenackitina* aff. *toddingensis*, f73, bb3/4/2000C, nr.1, 600x
- d. *Eisenackitina* aff. *toddingensis*, f75, bb3/4/2000D₁, nr.3, 1000x
- e. *Eisenackitina* aff. *toddingensis*, f76, bb3/4/2000D₂, nr.4, 1000x
- f. *Eisenackitina* aff. *toddingensis*, bb33.16, 99/0467, 1, 0108, 450x
- g. *Eisenackitina* aff. *toddingensis*, bb33.16, 99/0467, 1, 0099, 290x
- h. *Eisenackitina* aff. *toddingensis*, bb33.16, 99/0467, 1, 0097, 450x
- i. *Eisenackitina* aff. *toddingensis*, bb33.16, 99/0467, 1, 0103, 290x
- j. *Angochitina* sp., bb33.16, 99/0467, 1, 0098, 450x
- k. *Spinachitina* spp., f01, bb3/4/2000A, nr.6, 850x
- l. *Spinachitina* spp., f00, bb3/4/2000A, nr.2, 750x
- m. *Belonechitina* spp., f04, bb3/4/2000E, nr.9, 600x
- n. *Spinachitina* spp., f06, bb3/4/2000E, nr.19, 500x
- o. *Conochitina* spp., f09, bb3/4/2000E, nr.27, 500x
- p. *Armoricochitina nigerica*, f02, bb3/4/2000E, nr.2, 750x
- q. *Spinachitina* spp., f10, bb3/4/2000H, nr.5, 600x
- r. *Cyathochitina* spp., f18, bb3/4/2000H, nr.31, 500x
- s. *Ancyrochitina* spp., f13, bb3/4/2000H, nr.18, 850x
- t. *Ancyrochitina* spp., f14, bb3/4/2000H, nr.20, 750x

PLATE 8

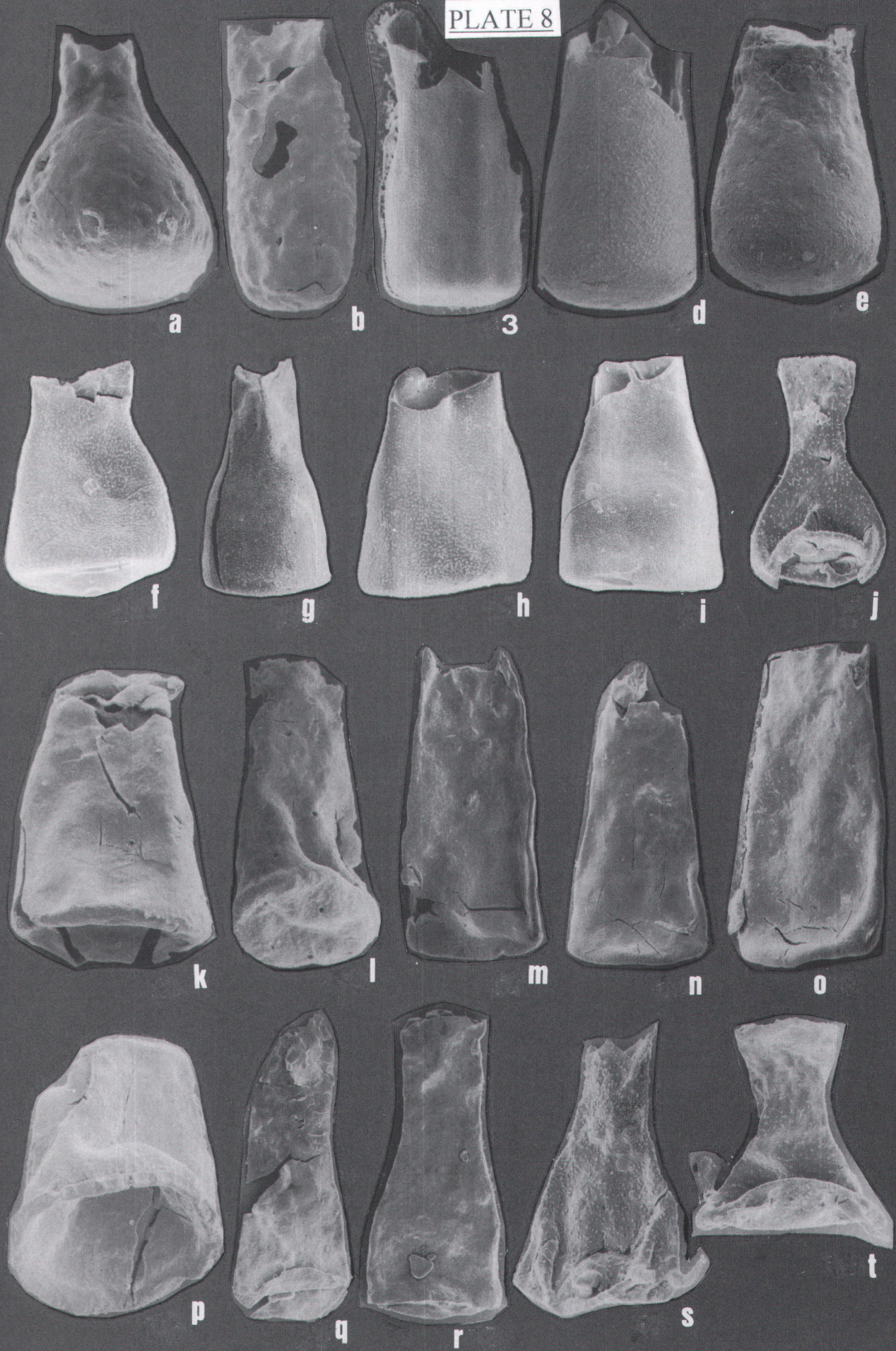


Plate 9

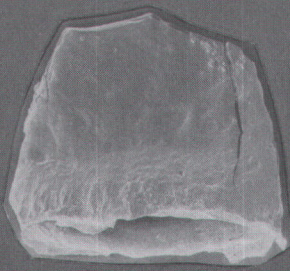
Génicot Formation and Criptia Group

- a. *Hercochitina* spp., f19, bb3/4/2000J, nr.1, 650x
- b. *Armoricochitina nigerica*, f11, bb3/4/2000H, nr.6, 500x
- c. *Belonechitina* spp., f20, bb3/4/2000J, nr.2, 650x
- d. *Hercochitina* cf *gamachiana*, f23, bb3/4/2000J, nr.7, 750x
- e. *Conochitina electa*, bb40.11, 99/502, 2, 0467, 400x
- f. *Conochitina electa?*, bb40.11, 99/502B, 2, 0459, 500x
- g. *Conochitina iklaensis*, bb40.11, 99/502B, 2, 0461, 235x
- h. *Conochitina electa?*, bb40.11, 99/502A, 2, 0445, 450x
- i. *Sphaerochitina* sp., bb40.10, 99/0496, 1, 0153, 400x
- j. *Belenochitina postrobusta*, bb40.10, 99/0496, 1, 0160, 290x
- k. *Belenochitina postrobusta*, bb40.10, 99/0496, 1, 0160, 1450x detail.

PLATE 9



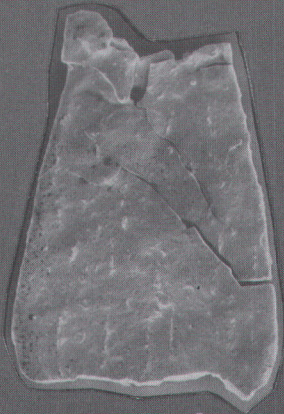
a



b



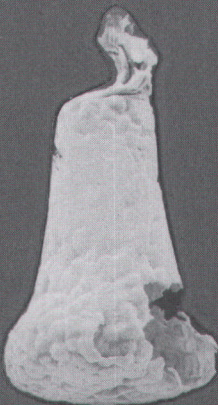
c



d



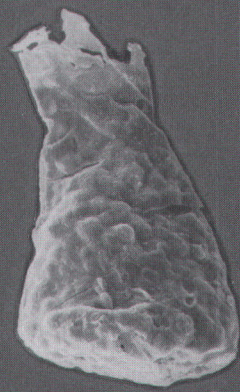
e



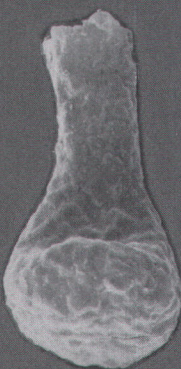
f



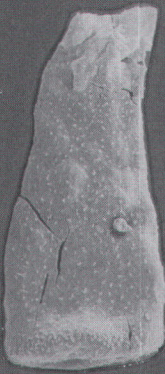
g



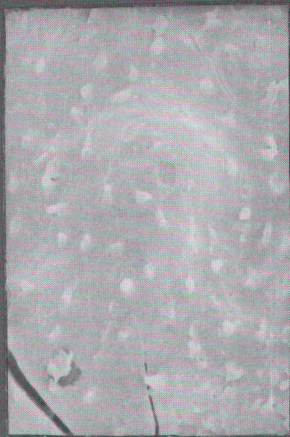
h



i



j



k