

## JONGERENDAG - JOURNEE DES JEUNES – 19.10.2018

## Abstracts of communications presented at the ‘Master Day’ meeting, Liège

**Differential radar interferometry and optical images analysis to study recent landslides evolution in the Maily-Say valley, Kyrgyzstan**VALENTINE PIROTON<sup>1</sup>, ROMY SCHLÖGEL<sup>2</sup> & HANS-BALDER HAVENITH<sup>1</sup><sup>1</sup>Department of Geology, University of Liège, Liège, Belgium; valentine@piroton.be; hb.havenith@uliege.be.<sup>2</sup>ESA Climate Office, ECSAT, Didcot-Harwell, United Kingdom; romy.schlogel@gmail.com.

Landslides have catastrophic consequences in most mountainous areas of the world, representing a major problem for society. In Central Asia, and more specifically in Kyrgyzstan, landslides are recurrent due to the high seismicity of the region and as a consequence of intense rainfalls. In spring 2017, Kyrgyzstan suffered a massive activation event which caused 160 emergency situations. Koytash and Tektonik, located in the Mailuu-Suu Valley and part of the Fergana Basin, belonged to the numerous landslides which collapsed during this event. They represent a major threat to the local population of the small town of Maily-Say, as well as the villages downstream. In this region, risks related to landslide are accentuated by the presence of uranium tailings, remnants of the former nuclear mining activity. The rupture of the Koytash landslide, one of the largest in the area, led to the damming of the Mailuu-Suu River for several weeks. This deep-seated landslide is characterised by a rotational movement and extends on 1 km. Whilst Koytash collapsed in its entirety, the Tektonik landslide was only partially reactivated, rupturing in its upper part. The main goal of this study was to identify the geological, geomorphic and meteorological factors which contributed to the massive failure of Koytash and Tektonik in spring 2017. Different remote and proximal sensing techniques, combined with an extensive meteorological analysis, were applied to identify the conditions that triggered the collapse of these landslides. The meteorological analysis considered many variables (rainfall, temperature, and snow depth) which influence soil water saturation and thus sediment mobility, playing a major role in the landslide process. In parallel, radar and optical analyses were combined to monitor deformation zones. The computation of deformation time series by advanced differential synthetic aperture radar interferometry (D-InSAR) technique were used to generate interferograms allowing the identification of slow displacements and the estimation of the evolution of displacement rates. The comparison of digital elevation models (DEMs; satellite and UAV imagery) enabled us to monitor changes in topography. Furthermore, we used optical imagery, through the difference of NDVIs (Normalized Difference Vegetation Index), to observe changes in landcover associated to sliding processes. The meteorological analysis revealed the important contribution of precipitations (rainfall combined with large snow accumulations linked to rapid melting) as triggers of the landslide movements in 2017. Indeed, despite a relative decrease in annual rainfall in 2017 compared to the preceding years, the month of April 2017 was characterised by heavy rains, including a major peak of rainfall the day of Koytash's failure. The D-InSAR analysis identified slow displacements during the months preceding the reactivation, indicating the long-term sliding activity of Koytash, well before the reactivation in April 2017. This was confirmed by the computation of deformation time series, showing positive velocity anomalies on the upper part of both landslides. The analysis of topography highlighted areas of depletion and accumulation, in the scarp and foothill

zones respectively. Moreover, the presence of these deformations was confirmed by the optical analysis and showed the efficiency of land cover changes as indicators of ground displacements. The multidirectional approach used in this study, justified by the complementary nature of the techniques, enabled the gathering of complete and coherent results to monitor Koytash and Tektonik landslides activity.

**Characterization of groundwater remediation using nanoparticles of zero-valent iron (nZVI)**

BENJAMIN K. BLYKERS\*, TIM DE KOCK &amp; VEERLE CNUUDE

*PProGRess, Department of Geology, Ghent University, Krijgslaan 281/S8, 9000 Ghent, Belgium.**\*corresponding author: Benjamin.Blykers@ugent.be.***Introduction**

Groundwater pollution is unfortunately omnipresent these days, and can be caused by a variety of industries, going from mining to even dry cleaning (Fayiga et al., 2018; Naghizadeh et al., 2011; Pous et al., 2018). One of the most recent and promising techniques for groundwater remediation is the injection of nanoparticles of zero-valent iron (nZVI) into the polluted aquifer. According to literature (Almeelbi & Bezbaruah, 2012; Lin et al., 2018; Stefaniuk et al., 2016), nZVI can reduce chlorinated hydrocarbons such as PCE (used as a dry cleaning fluid) and DDT (used as an insecticide) and transform a variety of dissolved metals into an insoluble phase, fixed to the rock, by several removal mechanisms: reduction, adsorption, oxidation and reoxidation, and (co-)precipitation (O'Carroll et al., 2013).

The purpose of this research is to investigate the transport behavior of nZVI through soils and its removal mechanisms of adsorption and (co)precipitation in a saturated soil sample. Barium was chosen for this specific study.

**Material and methods**

Batch tests were performed to quantify the decrease in barium concentration in a liquid phase upon application of nZVI. For this, eight different barium concentrations, four different amounts of a carboxymethylcellulose (CMC)-stabilized nZVI suspension and four grams of substrate consisting of quartz grains, were used. The total was shaken for 24 hours and the afterwards the liquid phase was analyzed chemically using inductively coupled plasma – optical emission spectrometry (ICP-OES).

The eight initial barium concentrations were 0.09 mg/L, 1.40 mg/L, 14.52 mg/L, 73.22 mg/L, 144.89 mg/L, 309.30 mg/L and 546.37 mg/L. The four amounts of nZVI were 0, 25, 50, and 100 mg of nZVI.

**Results and discussion**

The application of a higher amount of nZVI led to a higher amount of barium being sorbed to the substrate. However, in none of the samples barium was completely removed. The highest amount of removal occurred in the samples with a barium concentration of 73.22 mg/L and 100 mg of nZVI. After the experiment, the barium concentration was decreased to 14% of the initial concentration. It should also be noted that doubling the amount of nZVI from 50 to 100 mg did not lead to a double amount of barium being removed.

## Conclusion and further research

Although the batch test has proven that the application of nZVI reduce the amount of barium in solution, in none of the samples barium was completely removed. Additional batch test should be done to find out what amount of nZVI is required to remove all barium from the solution or what the maximum amount of removal is.

## References

- Almeelbi, T. & Bezbaruah, A., 2012. Aqueous phosphate removal using nanoscale zero-valent iron. *Journal of Nanoparticle Research*, 14/7, 14 p. <https://doi.org/10.1007/s11051-012-0900-y>
- Fayiga, A.O., Ipinmoroti, M.O. & Chirenje, T., 2018. Environmental pollution in Africa. *Environment, Development and Sustainability*, 20, 41–73. <https://doi.org/10.1007/s10668-016-9894-4>
- Lin, K.S., Mdlovu, N.V., Chen, C.Y., Chiang, C.L. & Dehvari, K. 2018. Degradation of TCE, PCE, and 1,2-DCE DNAPLs in contaminated groundwater using polyethylenimine-modified zero-valent iron nanoparticles. *Journal of Cleaner Production*, 175, 456–466. <https://doi.org/10.1016/j.jclepro.2017.12.074>
- Naghizadeh, A., Nasser, S. & Nazmara, Sh., 2011. Removal of trichloroethylene from water by adsorption on to multiwall carbon nanotubes. *Iranian Journal of Environmental Health Science & Engineering*, 8/4, 317–324.
- O'Carroll, D., Sleep, B., Krol, M., Boparai, H. & Kocur, C., 2013. Nanoscale zero valent iron and bimetallic particles for contaminated site remediation. *Advances in Water Resources*, 51, 104–122. <https://doi.org/10.1016/j.advwatres.2012.02.005>
- Pous, N., Balaguer, M.D., Colprim, J. & Puig, S., 2018. Opportunities for groundwater microbial electro-remediation. *Microbial Biotechnology*, 11/1, 119–135. <https://doi.org/10.1111/1751-7915.12866>
- Stefaniuk, M., Oleszczuk, P. & Ok, Y.S., 2016. Review on nano zerovalent iron (nZVI): From synthesis to environmental applications. *Chemical Engineering Journal*, 287, 618–632. <https://doi.org/10.1016/j.cej.2015.11.046>

## Evaluation of the effect of the urban heat island in Ghent on natural building stones

DAPHNE GUILBERT<sup>1</sup>, STEVEN CALUWAERTS<sup>2</sup>, TIM DE KOCK<sup>1</sup>

<sup>1</sup>*ProGRess-UGCT, Department of Geology, Ghent University, Krijgslaan 281/S8, 9000 Ghent, Belgium.*

<sup>2</sup>*Department of Physics and astronomy, Ghent University, Krijgslaan 281/S9, 9000 Ghent, Belgium.*

## Introduction

Rocks are, like other materials, susceptible to all kinds of weathering, depending on the prevailing climate at a certain location. Many studies have investigated the influence of climate on weathering in the past (e.g. Brimblecombe & Grossi, 2009) and its potential impact in the future (Grossi et al., 2007). This study is focused on the influence of the urban heat island on the frost weathering of Savonnières limestone, extensively used in Belgium as natural building stone. The urban heat island phenomenon is characterized by elevated temperatures, especially during the night, when temperature differences up to 10 °C can be measured in very large cities. This phenomenon is studied by climatic analysis of Ghent, situated in the northwest of Belgium, laboratory simulations and hygrothermal modelling.

## Materials

Savonnières limestone (Lehrberger & von Plehwe-Leisen, 2015) is deposited during the Tithonian, Late-Jurassic, and can be found in the Meuse and Haute-Marne areas in France, belonging to the *Oolithe Vacuaire* stratigraphical unit. It contains hollow ooids, which are formed during the deposition stage and became hollow during a diagenetic stage because of dissolution of faecal pellets. Besides hollow ooids, the limestone contains shell fragments, pellets and occasionally dolomites. These components are connected by sparitic calcite crystals, which fill the pores only par-

tially, resulting in triangular shaped pores. Pore sizes have a wide range of variability between 0.1 µm and 600 µm.

## Climatic analysis

One-year climatic data of six locations (Caluwaerts et al., 2016) in and around Ghent is analyzed and parameterized in order to understand the different climates of the city. The main difference between the urban and rural climate are the elevated temperatures and lower wind speeds in the city center, resulting in a reduced number of freeze-thaw cycles and a lower wind-driven load respectively. The significance of the urban heat island is influenced by the amount of clouds, resulting in a stronger urban heat island during clear sky conditions compared to cloudy conditions.

## Laboratory simulations

Based on the climatic analysis several freeze-thaw cycles are selected, in order to simulate realistic temperature fluctuations in a climatic chamber for a rural and urban climate on an isolated wet and oven-dried Savonnières limestone sample. The wet sample shows a zero-curtain effect, i.e. stabilization of the temperature around 0 °C, resulting from the release of latent heat from the phase transition of liquid water to ice. Only when the temperature is low enough or when the negative temperature remains long enough, this zero-curtain effect is breached, meaning that the stone cools further below 0 °C.

## Computational simulations

Hygrothermal modelling of Savonnières limestone is performed for the same urban and rural climate of Ghent to understand the differences in temperature, liquid content, ice volume and number of freeze-thaw cycles over one year between these climates. These simulations indicate no freeze-thaw cycles inside a stone situated in the city center, while a maximum of 50 freeze-thaw cycles is modelled inside a stone situated in the rural area of Ghent. This clearly confirms the difference between the rural and urban environments, as was already deviated from climate parameterization and laboratory experiments. The higher temperature inside an urban stone is the result of the urban heat island, while the lower liquid content probably is the result of the lower wind-driven load, resulting in less and shallower freeze-thaw cycles and ice content inside an urban stone.

## Conclusion and future research

The observations lead to the general conclusion that stones in urban climates in a Cfb climate, climate type of Ghent, experience lower freeze-thaw risk, related to the urban heat island. Towards the future, the results can be improved by studying different building materials with more climatic data.

## References

- Brimblecombe, P. & Grossi, C. M., 2009. Millennium-long damage to building materials in London. *Science of the Total Environment*, 407/4, 1354–1361. <https://doi.org/10.1016/j.scitotenv.2008.09.037>
- Caluwaerts, S., Termonia, P., Hamdi, R., Duchêne, F., Berckmans, J., Degrauwe, D. & Wauters, G., 2016. Monitoring the urban climate of the city of Ghent, Belgium. *Urban Climate News, International Association for Urban Climate*, 15–20.
- Grossi, C.M., Brimblecombe, P. & Harris, I., 2007. Predicting long term freeze-thaw risks on Europe built heritage and archaeological sites in a changing climate. *Science of the Total Environment*, 377/2–3, 273–281. <https://doi.org/10.1016/j.scitotenv.2007.02.014>
- Lehrberger, G. & von Plehwe-Leisen, E., 2015. Barrois-Oolithe: Vorkommen, Verwendung, Verwitterung und Erhaltung von Kalksteinen aus der Umgebung von Savonnières-en-Perthois und Morley im Département Meuse in Frankreich. *Münchner Geowissenschaftliche Abhandlungen (Reihe B)*, 22, 428 p.

## Geochemistry of *Nummulites* as a proxy for early Eocene paleotemperature evolution in the southern North Sea Basin

LISE MARTENS<sup>1,2,\*</sup>, PETER STASSEN<sup>1,2</sup>, ETIENNE STEUR-BAUT<sup>1,2</sup> & ROBERT P. SPEIJER<sup>1</sup>

<sup>1</sup>Department of Earth and Environmental Sciences, KU Leuven, Celestijnenlaan 200E, B-3001 Heverlee, Belgium.

<sup>2</sup>Directorate Earth and History of Life, Royal Belgian Institute of Natural Sciences, Vautierstraat 29, B-1000 Brussels, Belgium. \*corresponding author.

The early Eocene is characterized by sudden temperature peaks (hyperthermals), which are superimposed on a long term warming trend leading up to the Early Eocene Climatic Optimum (EECO). Our research assesses the usability of larger benthic foraminifera (LBF, i.e. *Nummulites*) as a proxy for long-term temperature change towards the EECO, as recorded in the Ypresian deposits of the southern edge of the North Sea Basin. We reconstruct paleotemperatures of this shallow marine setting by use of the Mg/Ca (mmol/mol) ratio of the calcareous tests of nummulites (Evans et al., 2018). Whereas nummulites are absent within the Ypresian clays of the Orchies and Aalbeke Members, they are present in the fine sands of the Mons-en-Pévèle Formation (i.e. pre-EECO assemblage of *N. involutus*; top NP11 to base NP12) and in the Egem sands of the Hyon Formation (i.e. EECO assemblage of *N. aquitanicus*; top NP12).

A detailed methodological study assesses the relationships between nummulite geochemistry and (a) preservation, (b) LBF test size and (c) foraminiferal cleaning techniques. Geochemical analysis using ICP-OES, together with SEM observations of different preservation states, indicates that increasing taphonomic alteration (i.e. partial dissolution of the outer test and recrystallization) results in a continuum of decreasing Sr/Ca and Mg/Ca in the tests, rendering unrealistically low paleotemperatures (Fig. 1). Well-preserved specimens without taphonomic bias are used to evaluate the effect of varying test size on the geochemistry of individual specimens (Egem/Ampe-F2 level). Smaller tests (radius < ± 3.5 mm) record a larger ‘natural’ variability, while the bigger specimens (radius > ± 3.5 mm) mostly record the upper range of Mg/Ca values. Thus,

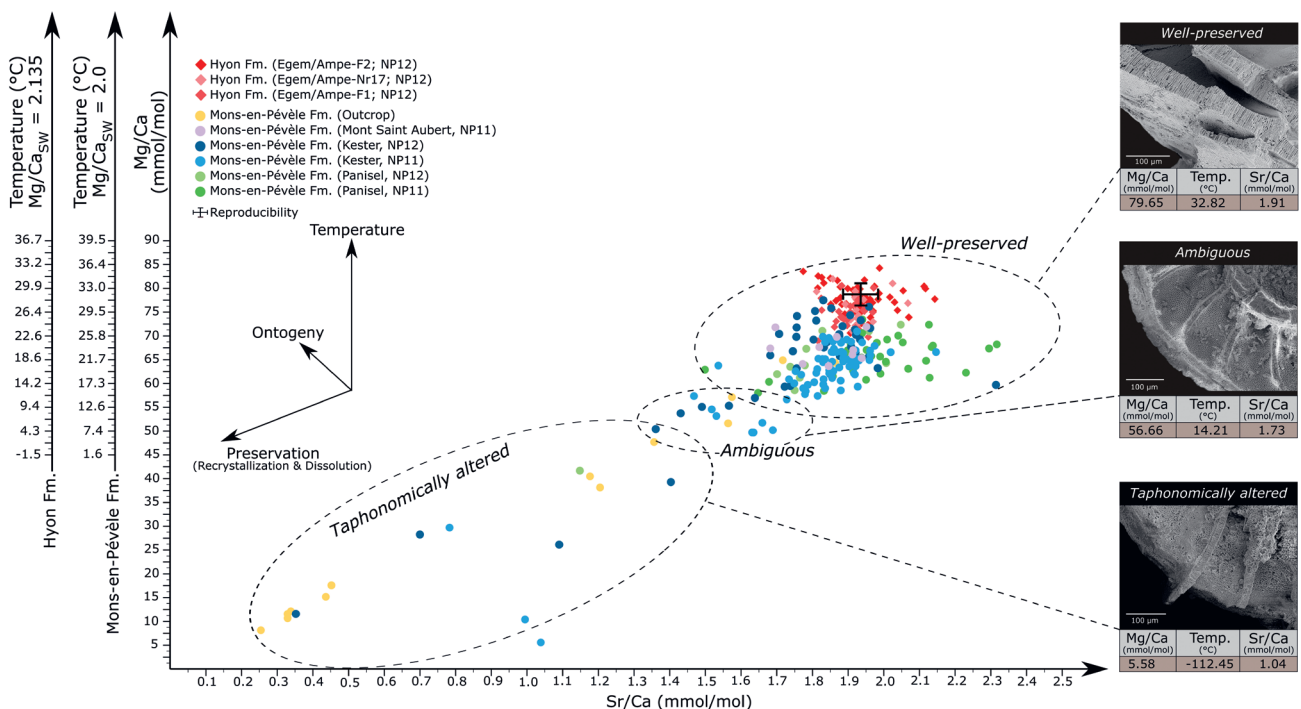
ontogenetic effects may bias towards higher paleotemperatures and must be taken into account. Traditional cleaning protocols for foraminifera remove elements associated with superficial sedimentary and diagenetic contaminations. Our results show that Fe and Mn are effectively removed during more intensive, chemical cleaning without considerable effect on the Mg/Ca ratio of the LBF tests. These results imply that Mg-contamination by sedimentary and diagenetic coatings is insignificant, and thus do not contribute to the presented paleotemperature estimates. Therefore, a simplified cleaning procedure of well-preserved specimens within a constrained size range is applied to verify mean annual temperature (MAT) changes towards the EECO.

Most nummulites from the Mons-en-Pévèle and Hyon Fms. (Steurbaut et al., 2016) are well-preserved and record reliable Mg/Ca ratios (± 60-85 mmol/mol) and high Sr/Ca ratios (> 1.75 mmol/mol). The MAT estimates reveal a gradual warming trend from 21-23 °C (top NP11) to 24-25 °C (base NP12) before the EECO, rising up to 28 °C during EECO peak warming (top NP12) (Martens, 2018). These MAT and the ± 7 °C warming trend are in agreement with other proxy data (Evans et al., 2018; Bijl et al.; 2009; Vanhove et al., 2011). We speculate that the LBF assemblage changes might be related to the crossing of temperature thresholds of the taxa.

Our observations indicate that nummulites provide useful proxies for the reconstruction of early Eocene temperature evolution in the studied shallow basin. Ongoing research will further reconstruct the temperature evolution of the Eocene and constrain the specific habitat preferences of the recorded nummulite taxa in the southern North Sea Basin and adjacent regions.

### References

- Bijl, P.K., Schouten, S., Sluijs, A., Reichart, G.J., Zachos, J.C. & Brinkhuis, H., 2009. Early Palaeogene temperature evolution of the southwest Pacific Ocean. *Nature*, 461/7265, 776–779. <https://doi.org/10.1038/nature08399>
- Evans, D., Sagoo, N., Renema, W., Cotton, L.J., Müller, W., Todd, J.A., Saraswati, P.K., Stassen, P., Ziegler, M., Pearson, P.N., Valdes P.J. & Affek, H.P., 2018. Eocene greenhouse climate revealed by coupled clumped isotope-Mg/Ca thermometry. *Proceedings of the National Academy of Sciences*, 115, 1174–1179. <https://doi.org/10.1073/pnas.1714744115>



**Figure 1.** Effect of different preservation states of nummulites on the relationship between Sr/Ca (mmol/mol) and Mg/Ca (mmol/mol), with equivalent paleotemperatures (°C) following Evans et al. (2018). The three preservation classes are exemplified by SEM images.



- Martens, L., 2018. Geochemistry of Nummulites as a proxy for Eocene paleotemperature evolution in the Southern North Sea Basin. Unpublished Master's thesis. KU Leuven, Belgium, 158 p.
- Steurbaut, E., De Ceukelaire, M., Lanckacker, T., Matthijs, J., Stassen, P., Van Baelen, H. & Vandenberghe, N., 2016. An update of the lithostratigraphy of the Ieper Group, 76 p. <https://ncs.naturalsciences.be/sites/default/files/Text%20%20Version%209%20%20Revision%20Litho%20Ieper%20Group%2015062016.pdf>, accessed 08/20/2019.
- Vanhove, D., Stassen, P., Speijer, R.P. & Steurbaut, E., 2011. Assessing paleotemperature and seasonality during the early Eocene climatic optimum (EECO) in the Belgian Basin by means of fish otolith stable O and C isotopes. *Geologica Belgica*, 14/3-4, 143–157.

## Natural and artificial tracers in unsaturated zone. Application to Larzac karst

AURÉLIE MARTIN<sup>1,2,\*</sup>, CÉDRIC CHAMPOLLION<sup>2</sup>, OLIVIER KAUFMANN<sup>1</sup>, PASCAL GODERNIAUX<sup>1</sup>

<sup>1</sup>University of Mons, Faculty of Engineering, Geology and Applied Geology, Rue de Houdain 9, 7000 Mons, Belgium.

<sup>2</sup>University of Montpellier, Géosciences Montpellier, CNRS, UA, 34196 Montpellier, France.

\*corresponding author: aurelie.martin@alumni.umons.ac.be.

The karstic aquifers are an important part of the world's freshwater resources and more particularly around the Mediterranean. These resources are vulnerable to pollution, but also to overexploitation or climate change. It is therefore important to understand better the transfers present in these environments and particularly in the epikarstic zone, the upper part of the unsaturated zone, the most vulnerable and the most recently studied. The unsaturated zone plays an important role in karstic aquifer dynamics, although its functioning is still poorly understood.

Geophysical methods allow imaging the structure of the epikarst. However, studying groundwater transfer in unsaturated zone is still a challenging task. Tracing is then used in this study to remedy this problem and to relate water flow with geological structures. Two tracing types are carried out on two different sites in Larzac (Massif Central, France): artificial tracing (Fluorescein and Sulforhodamine B) and natural tracing (temperature and water level).

The artificial multi-tracer experiment was initiated and interpreted in a calcareous epikarst. The chosen site (Tunnel of St Ferron, Campestre karstic plateau) has the advantage of providing access to the epikarst from the surface and at depth from an anthropogenic tunnel. This facilitates the implementation of this type of tracing. This multi-tracer experiment provides information on the type of transfer and the flow rate in the unsaturated zone. These results, related to the flow hypotheses deduced from the geophysical studies carried out on the zone (gravimetry, electrical resistivity), show the importance of using tracing in addition to geophysical methods to validate the hypotheses of flow and thus better know the epikarst and its functioning.

Natural tracers were studied in a dolomitic epikarst. The site (Observatory of 'GEK', Hospitalet karstic plateau) has boreholes of 20 and 50 m allowing the analysis of natural tracers such as water and temperature continuously for 5 years. A conceptual and numerical model has been deduced from these data. The temperature study provides information at global scale on climate change or the impact of the saturated zone on surface temperatures, as well as information at local scale such as the properties of the rock. Water levels provide information on transfer speeds.

In addition, this work has shown the importance of coordinated studies prior to any experimentation with tracers: geological analyzes, geophysical methods, knowledge of the material and its limits... It also showed the importance of the expected duration for such studies.

Finally, the joint study of artificial and natural tracers makes it possible to understand better the dynamics of water in the unsaturated zone. The continuation of joint studies of these tracers is therefore interesting to characterize other sites or karst regions. Especially, the impact of lithology on transfers could be deduced. These tracers can be used in numerical simulations, in parallel with geophysical measurements, in order to add constraints to the models.

## Experiments on metal-sulphur-silicate melts equilibria under the reducing conditions of Mercury

HADRIEN PIROTTE

University of Liège, Department of Geology, 12 allée du 6 Août B20, 4000 Liège, Belgium.

Mercury has a very high bulk density, with an iron core that makes up for 80% of the planet's radius, and yet it has a very low FeO content on the surface. Very high sulphur content is observed at the surface (up to 4 wt%), making Mercury a surprisingly volatile rich planet. The planet was formed under highly reducing conditions, creating unique conditions that change the behaviour of elements. This study aimed at understanding the element partitioning between the silicate melt, the metallic melt and the sulphide melt. A piston-cylinder was used to produce high temperatures (1300-1700 °C) and high pressures (~1.2 GPa) conditions relevant for crystallization conditions during the magma ocean stage. The first aspect of the project was to setup the apparatus and establish an appropriate protocol to use it. Several days of testing and adjustments were necessary to obtain a fully functional device. The composition used for the experiment was similar to enstatite chondrites, as their silicate composition is close to the bulk silicate composition of Mercury. Sulphur was added to the powders to saturate the silicate melt in sulphur. FeS was also added in order to obtain a metallic phase (FeSi) and to measure the oxygen fugacity in the samples. The oxygen fugacity ( $fO_2$ ) was controlled using silica metal in the starting compositions. Experimental products contain a silicate and a metallic (FeSi) melt. FeS globules were formed in 4 out of 14 samples, which implies that these experiments reached sulphur saturation. The composition for major and minor elements of the silicate, the metallic and the sulphide melts were acquired using the electron microprobe at the University of Hannover, Germany. Partition coefficients between the silicate melt and the metallic melt were concordant with other studies; Si become siderophile at highly reducing conditions, and Mn and Ti also show a siderophile behaviour with low oxygen fugacity. Temperature also has an influence on the behaviour of elements; at higher temperatures, Mn, Ti and Na show increasing siderophile behaviours. Phosphorus on the other hand become less siderophile with temperature. Concerning the partition coefficients between the silicate melt and the sulphide melt, Ti become increasingly chalcophile with decreasing  $fO_2$ . It appears clearly that a large amount of sulphur is lacking in the samples; approximately 23 wt% S were added to the powders and in non-saturated experiments, only ~5% S is left in the silicate melt. At high temperature, sulphur escaped and saturation was not obtained in most experiments. It appears that pure S is unstable and volatile, and is much stable bound to iron under the FeS form. The siderophile behaviour of Si at low oxygen fugacity could imply that significant amount of silicon partitioned into the core during the planet differentiation. This result has been confirmed by numerous studies. We propose that the chalcophile behaviour of Ti could form TiS (wassonite) as discovered recently in an enstatite chondrite. The stability of this mineral would have to be defined in future experiments, but, as the author of the discovery proposed, TiS could be the residue of evaporating Ti-bearing FeS. As space-weathering is an important phenomenon on Mercury, it would be interesting to study the partitioning of Ti in FeS and the evolution of FeS once exposed at the surface.

## Characterisation of unmelted Antarctic micrometeorites using synchrotron-based X-ray analysis

FLORE VAN MALDEGHEM<sup>1\*</sup>, STEVEN GODERIS<sup>1</sup>, BRECHT LA-FORCE<sup>2</sup>, BASTIEN SOENS<sup>1</sup>, ELLA DE PAUW<sup>2</sup>, JUSSI-PETTERI SUURONEN<sup>3</sup>, MATTHIAS VAN GINNEKEN<sup>1</sup>, LUIGI FOLCO<sup>4</sup>, VINCIANE DEBAILLE<sup>5</sup>, LASZLO VINCE<sup>2</sup>, AND PHILIPPE CLAEYS<sup>1</sup>

<sup>1</sup>AMGC, Vrije Universiteit Brussel, Brussels, Belgium.

<sup>2</sup>Department of Chemistry, Universiteit Gent, Ghent, Belgium.

<sup>3</sup>ESRF, European Synchrotron Radiation Facility, Grenoble, France.

<sup>4</sup>Department of Earth Sciences, Università di Pisa, Pisa, Italy.

<sup>5</sup>Lab G time, Université Libre Bruxelles, Brussels, Belgium.

\*Corresponding author: Flore.Van.MaldegheM@yub.be.

Every year, the Earth accretes approximately 40,000 metric tons of extra-terrestrial material, mainly in the form of micrometeorites (Love & Brownlee, 1993), particles ranging in size from 10 – 2000  $\mu\text{m}$  (Rubin & Grossman, 2010). Recently, micrometeorites have been found concentrated in sedimentary traps near mountain summits in the Transantarctic (e.g., Rochette et al., 2008; Suavet et al., 2009) and Sør Rondane Mountains (e.g., Soens et al., 2017; van Ginneken et al., 2018) in Antarctica. The collections of the Transantarctic and Sør Rondane Mountains contain well-preserved and relatively large (400 – 3000  $\mu\text{m}$ ) specimens compared to other micrometeorite collections (e.g., deep-sea sediments, Greenland and Antarctic ice and snow, deserts), proving that these two collections are among the most proficient deposits in the world. Unmelted micrometeorites, generally rare and small, did not suffer large degrees of melting upon entering the atmosphere and represent unique material that largely preserved the original petrographic, mineralogical and geochemical properties of the precursor material (van Ginneken et al., 2012). Samples from the above-mentioned collections provide a unique opportunity to study the characteristics of a set of unmelted micrometeorites from different locations across the Antarctic continent.

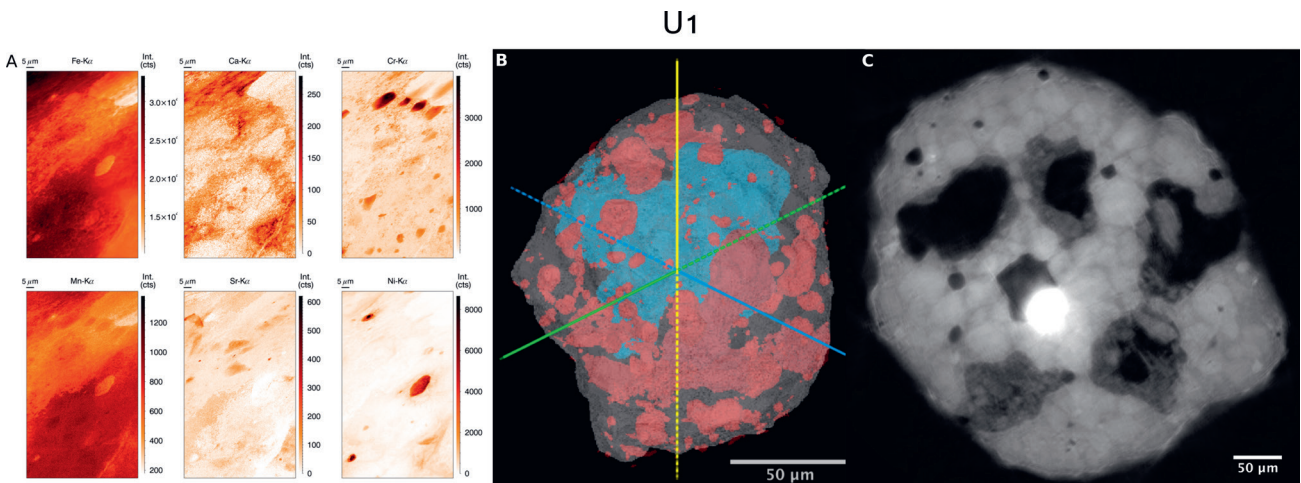
The selected micrometeorites, two samples from the Transantarctic and six samples from the Sør Rondane Mountains with a size between 100 and 400  $\mu\text{m}$ , were non-destructively characterised at the ID16B Nano-Analysis beamline at the European Synchrotron Radiation Facility (ESRF) by collecting nanoCT,

nanoXRF and XRD data. The results provide information on mineralogical, textural, structural and chemical variations in these particles and help characterise primary parent body features. Five particles were subsequently polished and examined using a JEOL JSM-IT300 SEM-EDS system (Vrije Universiteit Brussel) to analyse the interior of these particles and compare with the data obtained from the non-destructive analytical techniques mentioned earlier.

Three main conclusions could be drawn from this study. First of all, nanoscale analysis of micrometeorites at the ID16B beamline at the ESRF allows for a non-destructive set of analytical tools to characterise micrometeorites using XRF and CT. These techniques provide respectively elemental maps at nanoscale with information regarding the distribution of chemical elements and the identification of large structures (> 10  $\mu\text{m}$ ) like crystals, vesicles and various rims, and are adequate for a first characterisation and classification of the samples (Fig. 2). Secondly, the results obtained during this study update the classification criteria previously established by Genge et al. (2008), provided a larger number of particles are analysed in the same manner and values are statistically valid. Additional parameters could be the porosity, based on the CT scans and the chemical composition, based on the XRF. Finally, the two different collections were compared, and differences in chemical composition were noticed. Initially, it was assumed that Antarctic collections were pristine and did not exhibit terrestrial alteration effects, however, this study and previous studies (van Ginneken et al., 2016) reveals evidence of the effect of the Antarctic environment on the sample chemical composition. Weathering processes should be taken into account when tracing the precursor material of Antarctic micrometeorites based on its chemical composition. Also, since the Antarctic weathering processes may serve as an analogue for aqueous alteration processes on asteroids (Suttle et al., 2019), studying its effects may help to improve our understanding of the latter.

### Acknowledgements

This work was supported by the Italian Programma Nazionale delle Ricerche in Antartide (PNRA) and the Belgian Federal Science Policy Office (BELSPO).



**Figure 2.** A) Elemental maps constructed based on the data obtained at ID16B beamline of the ESRF for sample U1. The intensity for every element is given in counts. From left to right (top, then bottom): Fe, Ca, Cr, Mn, Sr and Ni. B) 3D volume of sample U1 reconstructed with Octopus Visualisation using the CT scans obtained at the ID16B beamline. The surface is grey and rendered transparent in order to visualise the vesicle distribution inside. The size range of the vesicles is given by the colour scale red (small vesicles) to blue (large vesicles). C) CT slice of sample U1 obtained at ID16B beamline of the ESRF. The brighter the image, the denser the material in that area.

## References

- Genge, M.J., Engrand, C., Gounelle, M. & Taylor, S., 2008. The classification of micrometeorites. *Meteoritics & Planetary Science*, 43, 497–515. <https://doi.org/10.1111/j.1945-5100.2008.tb00668.x>
- Love, S.G. & Brownlee, D.E., 1993. Target porosity effects in impact cratering and collisional disruption. *Icarus* 105, 216–224. <https://doi.org/10.1006/icar.1993.1119>
- Rochette, P., Folco, L., Suavet, C., van Ginneken, M., Gattacceca, J., Perchiazzi, N., Braucher, R., Harvey, R.P., 2008. Micrometeorites from the Transantarctic Mountains. *Proceedings of the National Academy of Sciences*, 105, 18206–18211. <https://doi.org/10.1073/pnas.0806049105>
- Rubin, A.E. & Grossman, J.N., 2010. Meteorite and meteoroid: New comprehensive definitions. *Meteoritics & Planetary Science*, 45, 114–122. <https://doi.org/10.1111/j.1945-5100.2009.01009.x>
- Soens, B., Goderis, S., Greenwood, R.C., McKibbin, S.J., van Ginneken, M., Vanhaecke, F., Debaille, V., Franchi, I.A. & Claeys, P., 2017. Major, trace element concentration and triple-oxygen isotope compositions of G- and I-type spherules from the Sør Rondane Mountains, East Antarctica. 80th Annual Meeting of the Meteoritical Society, 2017, 6288.
- Suavet, C., Rochette, P., Kars, M., Gattacceca, J., Folco, L. & Harvey, R.P., 2009. Statistical properties of the Transantarctic Mountains (TAM) micrometeorite collection. *Polar Science*, 3, 100–109. <https://doi.org/10.1016/j.polar.2009.06.003>
- Suttle, M.D., Folco, L., Genge, M.J., Russell, S.S., Najorka, J. & van Ginneken, M., 2019. Intense aqueous alteration on C-type asteroids: Perspectives from giant fine-grained micrometeorites. *Geochimica Cosmochimica Acta*, 245, 352–373. <https://doi.org/10.1016/j.gca.2018.11.019>
- van Ginneken, M., Folco, L., Cordier, C. & Rochette, P., 2012. Chondritic micrometeorites from the Transantarctic Mountains. *Meteoritics & Planetary Science*, 47, 228–247. <https://doi.org/10.1111/j.1945-5100.2011.01322.x>
- van Ginneken, M., Genge, M.J., Folco, L. & Harvey, R.P., 2016. The weathering of micrometeorites from the Transantarctic Mountains. *Geochimica Cosmochimica Acta*, 179, 1–31. <https://doi.org/10.1016/j.gca.2015.11.045>
- van Ginneken, M., Goderis, S., Soens, B., Debaille, V. & Claeys, P., 2018. Micrometeorites from the Sør Rondane Mountains, Antarctica. *Goldschmidt Abstracts*, 2018, 2620.