

TOURNAISIAN

Luc HANCE¹, Edouard POTY² & François-Xavier DEVUYST³

(6 figures)

1. Carmeuse Coordination Center, bd de Lauzelles, 65 – B1348 Louvain-la-Neuve, Belgium; E-mail: luc.hance@skynet.be
2. Service de Paléontologie animale, Université de Liège, Bâtiment B18, Allée du 6 août, Sart Tilman, B-4000 Liège; E-mail: e.poty@ulg.ac.be
3. Department of Geology, Trinity College, Dublin 2, Ireland; E-mail: devuyst@hotmail.com

ABSTRACT. The main elements that prompted the international community to use the Tournaisian as a name for the oldest stage of the Mississippian Subsystem are the same as those for the Viséan, i. e., the quality of exposures in southern Belgium, the diversity of facies, the pioneering palaeontological work that started in the mid 19th century and development of foraminiferal, conodont and rugose corals zonation in the last decades. The numerous Tournaisian sections in southern Belgium document a progressive change in environmental setting, from a ramp during the early Tournaisian to a shelf during the late Tournaisian. The spectacular late Tournaisian Waulsortian buildups that occurred within 2 third-order sequences had a strong impact on subsequent Viséan sedimentation. Recent advances in understanding the sequence stratigraphy has led to new insights on correlation between the central Dinant Sedimentation Area and more proximal areas.

KEYWORDS: Tournaisian, Belgium, Lithostratigraphy, Biostratigraphy, Palaeogeography.

Reference to this paper: Hance, L., Poty, E. & Devuyt, F.X., 2006. Tournaisian. In Dejonghe, L., ed., Current status of chronostratigraphic units named from Belgium and adjacent areas, *Geologica Belgica*, Brussels, 9/1-2: 47-53.

1. Name

Tournaisian (English), Tournaisiaan (Dutch), Tournaisium (German), Tournaisien (French).

2. Age

The Tournaisian is included in the early Mississippian Epoch (359.2 – 318.1 Ma) of the Carboniferous Period. It has a duration of about 12 Ma (353.7 ± 4.2 to 342 ± 3.2) from Menning *et al.* (2001) and 15.3 Ma (359.2 ± 2.5 to 345.3 ± 2.1) from the Geological Time Scale in Gradstein *et al.* (2004).

3. Authors

Dumont (1832) was the first to divide the Lower Carboniferous into two stages that were later named the calcaire de Tournai (or Tournaisian) and calcaire de Visé (or Viséan). The first mention of the “calcaire carbonifère de Tournai” was given by de Koninck (1842-1844). The latter stratigraphic unit successively became the étage du calcaire de Tournai (Gosselet, 1860), Assise de Tournai (Dupont, 1861) and “Étage de Tournai” in the legend of 6 sheets of the geological map of Belgium at the scale of 1:20 000 (Dupont, 1882-1883).

4. Historical type area

Geological map Antoing-Leuze (37/7-8; Hennebert & Doremus, 1997a) and Hertain-Tournai (37/5-6; Hennebert & Doremus, 1997b).

The “Calcaire de Tournai” refers to the town of Tournai in western Belgium, close to the border with France (Fig. 1), where numerous quarries were opened for building material during the 19th Century (Fig. 2). Demanet (1958) gave an exhaustive review of the old literature about the Tournai type area.

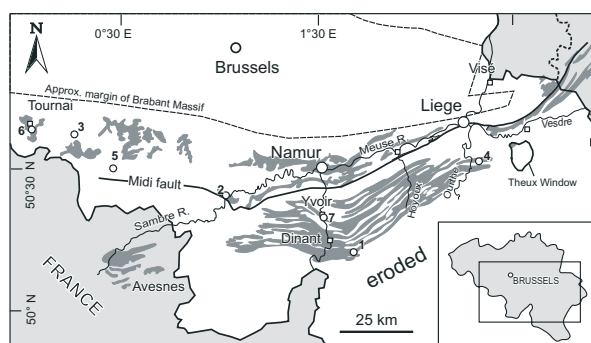


Figure 1. Location of Tournaisian sections mentioned in the text. 1. Gendron-Celles; 2. Landelies; 3. Leuze drillhole; 4. Rivage; 5. Saint-Ghislain drillhole; 6. Tournai, Asile d’Aliénés drillhole; 7 Yvoir. The shaded areas represent Lower Carboniferous outcrops.

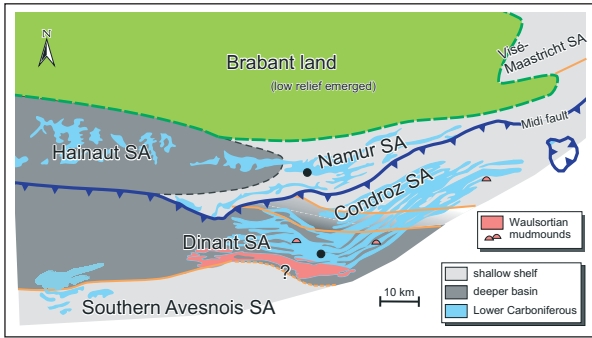


Figure 4. Palaeogeography of the Namur-Dinant Basin at the time of the Tournaisian-Viséan transition (modified from Hance *et al.*, 2001).

southernmost part of the Dinant S.A., the Waulsortian buildups started growing at a level close to the base of the Ivorian. The dominantly violet-grey wackestones to packstones of the Leffe Fm form their lateral equivalent. In the Hainaut S.A., the Carboniferous starts with the Samme Fm, characterized by sandstones, shales, dolomitic sandstones and dolomitic limestones. The overlying Pont d’Arcole and Landelies Fm keep the characters they have

in southern Belgium (Poty *et al.*, 2002). In the western part of the Hainaut S.A. (Tournai-Leuze area), the Orient Fm rests on the Landelies Fm. It consists of calcareous shales with crinoidal and other fossiliferous beds. Dominant lithologies of the overlying “Calcaire de Tournai” are thin- to medium-bedded, dark crinoidal limestones, locally argillaceous, including marlstone layers, cherty layers and shelly beds. An argillaceous bed, the “Gras Délit”, is the marker for dividing the “Calcaire de Tournai” into two formations, the Tournai and Antoing. The Pecq Fm overlying the “Calcaire de Tournai” consists of massive crinoidal limestones and dolomites. The succession in the eastern part of the Hainaut S.A. is slightly different but displays similar facies. The famous building stone “Petit Granit” is a crinoidal limestone which corresponds to the Soignies Mbr of the Ecaussinnes Fm. It includes in its upper part a marker bed, the “Délit à la terre bleue” which correlates with the “Gras Délit” of the Tournai area.

8. Sedimentology and palaeogeography

After the late Devonian regression, the depositional setting was a carbonate platform which evolved from a south fac-

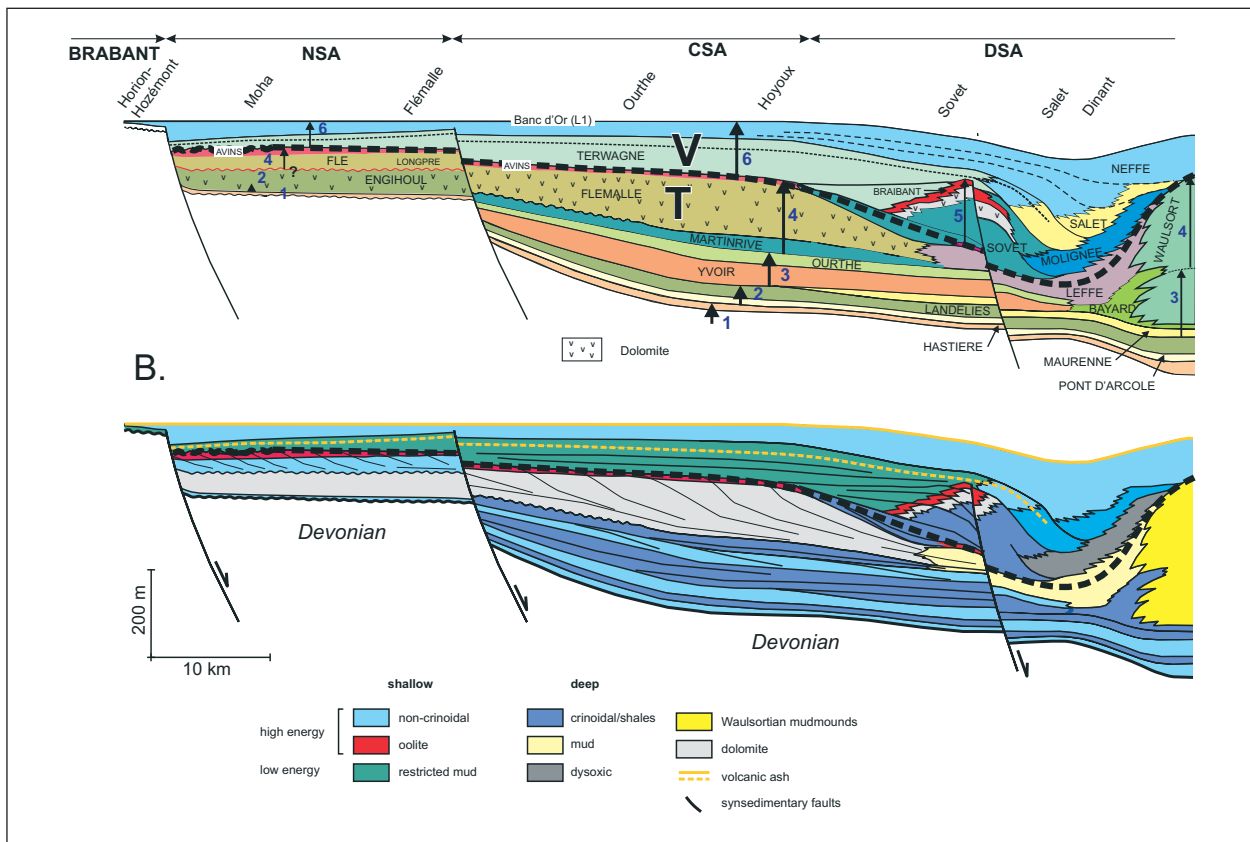


Figure 5. A. Organization of Tournaisian (T) and Lower Viséan (V) sedimentation across the Namur-Dinant Basin. Numbered black arrows indicate third-order sequences. Note 1) the evolution from a homoclinal ramp at the time of the Devonian-Carboniferous boundary to a shelf in the latest Tournaisian, 2) the position of the T-V boundary which coincides with a gap in the inner shelf areas and whose transition can only be documented in the deeper-water facies of the Dinant S.A. NSA= Namur Sedimentation Area; CSA= Condroz Sedimentation Area; DSA= Dinant Sedimentation Area. B. Facies distribution

ing ramp at the D/C boundary to a rimmed shelf during the late Tournaisian (Fig. 5; Hance *et al.*, 2001). The Hastarian (Lower Tournaisian) succession displays rather similar facies throughout the Namur-Dinant Basin, reflecting a very gentle slope ramp setting. Lithostratigraphic correlations are well documented. Towards the north, formations become thinner and stratigraphic gaps increase. During the Ivorian (Upper Tournaisian), the ramp evolved progressively to a rimmed-shelf and a discontinuous barrier of Waulsortian buildups developed in the southwestern part of the Dinant Sedimentation Area (Lees, 1997).

Four third-order sequences are identified in the Tournaisian of southern Belgium (Fig. 5; Hance *et al.*, 2001, 2002; Poty *et al.*, 2002). A similar trend is observed in northern France (Hance *et al.*, 2001), southwestern Britain (Hance *et al.*, 2002) and Poland (Poty *et al.*, in press).

9. Palaeontology

9.1. Foraminifers

Poty *et al.* (in press) recognize 8 foraminiferal zones, MFZ1 to MFZ8 in the Tournaisian (Fig. 6). The fossil group is more diversified, mainly in the Upper Tournaisian, than indicated previously by Conil *et al.* (1991). Several levels are useful for long distance correlation: the entry of *Palaeospiroplectammina tchernyshinensis* in the upper part of the Landelies Fm (MFZ 3), the entry of spinose endothyrids in the lower part of the Yvoir Fm (MFZ4), the *Paraendothyra naliokini* fauna in the upper part of the Yvoir Fm (MFZ5 = Cf2 of Conil *et al.*, 1991) coexisting with abundant *Granuliferella* and *Tournayellina* and, the entry of *Lugtonia monilis* in the Flémalle Fm (MFZ7) and that of *Eoparastaffella* Morphotype 1 (Poty *et al.*, in press) in the Avins Mbr (Longpré Fm), the lowermost part of the Sovet Fm and uppermost part of the Leffe Fm (MFZ8).

9.2. Rugose corals

The zonation of Poty (1985; in Conil *et al.*, 1991) has been outlined in Poty *et al.* (in press) and correlated with the foraminifer and conodont occurrences (Fig. 6).

The Tournaisian is covered by four Rugose Coral Zones: RC1 to RC4 Zones. The base of the Stage is within the RC1 α Subzone (the base of RC1 is situated just above the Hangenberg event, at the base of the upper *praesulcata* conodont Zone) and the top corresponds approximately to the top of the RC4 β 1 Subzone

Some Tournaisian coral zones defined in northwestern Europe can be recognized across Eurasia and in some cases as far as North America and Australia and, therefore, are useful for long-distance correlation. These are:

- (1) the base of the RC1 Zone characterized by the spread of survivors of the Hangenberg event (Eurasia, North America);
- (2) the base of the RC1 γ Subzone (corresponding to the base of the Pont d'Arcole Fm in Belgium) which is

characterized by the appearance and dispersal of *Uralinia* (Eurasia);

(3) the RC3 α Subzone (lower part of the Yvoir Fm) characterized notably by the appearance and dispersal of *Uralinia* of the *U. gigantea* group, *Cyathoclisia* and *Keyserlingophyllum* (Eurasia);

(4) the RC4 β 1 Subzone (Avins Mbr) which comprises taxa (*Amygdalophyllum* and *Merlewoodia*) which are found in Eurasia, including Japan, and Australia.

9.3. Conodonts

The conodont pattern for the Tournaisian is detailed and offers a powerful correlation tool. It is mainly the result of work by Groessens (1975), Belka & Groessens (1986), Conil *et al.* (1991) and Webster & Groessens (1991). Unfortunately, the facies in the lower part of the Hastière Fm are unsuitable and the evolutionary lineage from *Siphonodella praesulcata* to *S. sulcata* cannot be found in Belgium. The entry of *Polygnathus communis carina*, just after the disappearance of the siphonodellid fauna, marks the base of the Ivorian (see Hance & Poty, The Ivorian Substage, this volume a). The successive incomings of *Dollymae bouckaerti*, *Protognathodus cordiformis*, *Scaliognathus europensis*, and *Doliognathus latus* are among the most significant levels for correlation.

9.4. Other groups

Abundant illustrations of Tournaisian macrofauna (brachiopods, gastropods, bivalves, crinoids, cephalopods) can be found in the pioneering works of de Koninck (1842-

Stratigraphy	Foraminifers			Conodonts		Corals		3 rd order sequences			
	Hance & Devuyt	Conil et al., 1991	Marnet	Conil et al., 1991 and this paper		Poty					
MISSISSIPPIAN	VISEAN	Mol. emend.									
			MFZ9	2	10	homo.	Gnathodus homopunctatus	RC4	β 2	5	
	TOURNAISIAN	Ivorian		Cf4		anchoralis	Mestognathus beckmanni		β 1	4	
			MFZ8				Mestognathus praebekmanni ?		α		
			MFZ7				Doliognathus latus	RC3	γ		
		Hastarian		Cf3		9	carina	Dollymae bouckaerti ?		β	3
			MFZ6				cordiformis	Dollymae hassi		α	
			MFZ5	Cf2				Gnathodus			
	DEVONIAN	FAMENNIAN	Strutian				Siphonodella	upper obsolete	RC2		2
				MFZ4	γ	α^{III}	8		lower obsolete		
MFZ3				β	α^{II}	7		upper cooperi	RC1	β	
MFZ2				Cf1	α^{II}			upper cooperi		α	
	MFZ1	α	α	pre-7		cooperi					
	DFZ8					late praesulcata	RC0		1		
	DFZ7	ϵ		6			β				
	DFZ6	δ		5			α				
	DFZ5	γ									

Figure 6. Biostratigraphic pattern for the Tournaisian of Belgium (modified from Hance *et al.*, in press). The correlation of the Hainaut S.A. succession with that of southern Belgium is tentative. The position of the Dendre Fm and Lens Fm is based on the foraminifers. The conodont fauna from the Pont de Lens Mbr (Dendre Fm) and from the Lens Fm, documented by Groessens *et al.* (1982), correlates with Zone MFZ7 of Hance *et al.* (in press).

1844), relying mainly on the fauna from the Tournai area. Subsequent papers are numerous and the reader is referred to Demanet (1958).

10. Chronostratigraphy

The base of the Tournaisian coincides with that of the Carboniferous. The latter is defined by the entry of the conodont *Siphonodella sulcata* in the lineage from *S. praesulcata* to *S. sulcata* in a section at La Serre, France (Paproth *et al.*, 1991). This entry follows the Hangenberg event, a drastic sea-level drop responsible for the demise of Devonian fauna (Paproth, 1986 ; Dreesen *et al.*, 1988). In southern Belgium, this event is recorded by a metre-thick bed of rudstones and grainstones with lithoclasts, ooids, crinoids and a reworked Devonian fauna. The D/C boundary has traditionally been placed at its top, although diagnostic conodonts are lacking at this level (Paproth *et al.*, 1983 ; Conil *et al.*, 1986).

11. Geochronology

No radiometric data have yet been obtained within the Belgian Tournaisian.

12. Structural setting

The Dinant Sedimentation Area and the Condroz S. A. are included in the Dinant Synclinorium, which was part of the Ardennes Allochthon. The Lower Carboniferous formations and the Famennian siliciclastics form respectively the core of synclines and anticlines. Palaeogeographic reconstructions have enabled the Ardennes Allochthon to be restored to its original position, 15 to 30 km southwards of its present position .

The Hainaut S.A. and the northern part of the Namur S.A. correspond to the Brabant Parautochthon (northern flank of the Namur "Synclinorium"). The southern part of the NSA is exposed in the thrust sheets distributed along the Midi fault (southern flank of the Namur "Synclinorium").

The Visé S.A. has a complex tectonic history and sedimentation is governed by block faulting (Poty, 1997)

13. Reference sections in Belgium

Hainaut Sedimentation Area

- Lemay quarry, SE of Tournai (Hennebert & Doremus, 1997b).
- Asile d'Aliénés (Legrand *et al.*, 1966 ; Coen *et al.*, 1981) ; Vieux-Leuze (Legrand *et al.*, 1966 ; Groessens, 1975 ; Coen *et al.*, 1981) and Saint-Ghislain boreholes (Groessens *et al.*, 1982).

Dinant Sedimentation Area

- Railway cut at Gendron-Celles station (Conil, 1968; Groessens, 1975; Lees *et al.*, 1985; Conil *et al.*, 1988 ; Van Steenwinkel, 1993).
- Abandoned quarries at Yvoir railway station (Conil, 1960 ; Groessens, 1973, 1975).
- Rivage section (Conil, coll. Lys & Paproth, 1964; Groessens, 1975 ; Conil *et al.*, 1986).

Namur Sedimentation Area

- andelies, Sambre River section (Mamet *et al.*, 1970 ; Groessens *et al.*, 1976 ; Groessens, 1985 ; Delcambre & Pingot, 2000)

14. Main contributions

In addition to the works already mentioned :
De Dorlodot (1895) ; Camerman (1944) ; Conil (1968); Mortelmans (1969, 1976).

15. Remarks

The Tournaisian is currently the only stage of the Lower Series of the Mississippian Subsystem (Heckel, 2004); its elevation to the rank of series is possible but requires also the elevation of selected local substages to the stage level. This would require for each the definition of a biostratigraphic criterion useful for long distance correlation and an appropriate GSSP.

16. Acknowledgements

The authors thank Paul Brenckle for critically reading the manuscript and correcting the English and Alan Lees for pertinent comments. F.X. Devuyt gratefully acknowledges the award of a doctoral fellowship from the Belgian National Fund for Scientific Research (FNRS) and of a postdoctoral fellowship from the Irish Research Council for Science, Engineering and Technology (IRCSET).

References

- BELKA, Z. & GROESSENS, E. 1986. Conodont succession across the Tournaisian-Viséan boundary beds at Salet, Belgium. *Bulletin de la Société belge de Géologie*, 95: 257-280.
- CAMERMAN, C., 1944. La pierre de Tournai : son gisement, sa structure et ses propriétés, son emploi actuel. *Mémoires de la Société belge de Géologie*, Nouv. série, in 4°, 1 : 1-86.
- COEN-AUBERT, M., GROESSENS, E. ET LEGRAND, R., 1981. Les formations paléozoïques des sondages de Tournai et de Leuze. *Bulletin de la Société belge de Géologie*, 89 : 241-275.

- CONIL, R., 1968. Le calcaire carbonifère depuis le Tn1a jusqu'au V2a. *Annales de la Société géologique de Belgique*, 90: B687-B726.
- CONIL, R., DREESEN, R., LENTZ, M.A., LYS, M. & PLODOWSKI, G., 1986. The Devonian-Carboniferous transition in the Franco-Belgian basin with reference to Foraminifera and brachiopods. *Annales de la Société géologique de Belgique*, 109 (1): 19-26.
- CONIL, R., GROESSENS, E., HIBO, D., LALOUX, M., LEES, A. & POTY, E. 1988. The Tournaisian-Viséan boundary in the type area. *Guidebook, Field Meeting, Palaeontological Association Carboniferous Group*, 22-25 April 1988; Institut de Géologie, Université Catholique de Louvain, Louvain-la-Neuve : 2 vols: 1-145.
- CONIL, R., GROESSENS, E., LALOUX, M., POTY, E. & TOURNEUR, F. 1991. Carboniferous guide foraminifera, corals and conodonts in the Franco-Belgian and Campine Basins: their potential for widespread correlation. In Brenckle, P.L. & Manger, W.L (eds), *Intercontinental Correlation and Division of the Carboniferous System. Courier Forschungsinstitut Senckenberg*, 130: 15-30.
- CONIL, R., GROESSENS, E., PIRLET, H. 1977. Nouvelle charte stratigraphique du Dinantien type de la Belgique. *Annales de la Société géologique du Nord*, 96: 363-371.
- CONIL, R., MORTELMANS, G. & PIRLET, H., 1971. Le Dinantien. In Bouckaert, J., Conil, R., Delmer, A., Groessens, E., Mortelmans, G., Pirlet, H., Strel, M. & Thorez, J., *Aperçu géologique des formations du Carbonifère belge. Service géologique de Belgique, Professional Paper*, 1971/2: 1-42.
- DÉLCAMBRE, B. & PINGOT, J.L.M 2000. Notice explicative de la carte géologique de Fontaine L'Évêque – Charleroi (46/7-8). Ministère de la Région Wallonne-D.G.R.N.E.: 1-114.
- DELEPINE, G. 1911. Recherches sur le Calcaire Carbonifère de la Belgique. *Mémoires et Travaux de la Faculté catholique de Lille*, 8.
- DEMANET, F. 1958. Contribution à l'étude du Dinantien de la Belgique. *Institut royal des Sciences naturelles de Belgique*, Mémoire 141: 1-152.
- DORLODOT (de), H. 1895. Le Calcaire Carbonifère de la Belgique et ses relations stratigraphiques avec celui du Hainaut français. *Annales de la Société géologique du Nord*, 23: 201-313.
- DREESEN, R., PAPROTH, E. & THOREZ, J., 1988. Events documented in Famennian sediments (Ardenne-Rhenish Massif, Late Devonian, NW Europe). In : N.J. McMillan, Embry, A.F. & Glass, D.J. Eds., *Devonian of the World*, vol. II : Sedimentation. *Canadian Society of Petroleum Geology*, 14, 2 : 295-308.
- DUMONT, A. 1832. Mémoire sur la constitution géologique de la Province de Liège. *Mémoire cour. de l'Académie royale des Sciences*, Bruxelles, 8.
- DUPONT, E. 1861. Note sur les gîtes de fossiles du calcaire des bandes carbonifères de Florennes et de Dinant. *Bulletin de l'Académie royale de Belgique*, 2^{ème} Série, 12.
- DUPONT, E. 1882, Explication de la feuille de Ciney. Carte géologique de la Belgique.
- DUPONT, E. 1883, Explication de la feuille de Dinant. Carte géologique de la Belgique.
- GOSSELET, J. 1860. Observations sur les terrains primaires de la Belgique et du Nord de la France. *Bulletin de la Société géologique de France*, 2^{ème} Série, 18.
- GRADSTEIN, F.M., OGG, J.G., SMITH, A.G., AGTERBERG, F.P., BLEEKER, W., COOPER, R.A., DAVYDOV, V., GIBBARD, P., HINNOV, L., HOUSE, M.R., LOURENS, L., LUTERBACHER, H.-P., MCARTHUR, J., MELEHIN, M.J., ROBB, L.J., SHERGOLD, J., VILLENEUVE, M., WARDLAW, B.R., ALI, J., BRINKHUIS, H., HILGEN, F.J., HOOKER, J., HOWARTH, R.J., KNOLL, A.H., LASKAR, J., MONECHI, S., PLUMB, K.A., POWELL, J., RAFFI, I., RÖHL, U., SANFILIPPO, A., SCHMITZ, B., SHACKLETON, N. J., SHIELDS, G.A., STRAUSS, H., VAN DAM, J., VAN KOLFSCHOTEN, T., VEIZER, J., WILSON, D. 2004. A geologic time scale 2004. Cambridge Univ. Press, Cambridge.
- GROESSENS, E. 1975. Distribution des conodontes dans le Dinantien de la Belgique. International Symposium on Belgian micropaleontological limits from Emsian to Viséan, Namur 1974. Geological Survey of Belgium, Publication n° 17: 1-193.
- GROESSENS, E. 1978. La série tournaisienne dans la région des Ecaussinnes (bord nord du Synclinorium de Namur). *Bulletin de la Société belge de Géologie*, 87 (2) : 67-72.
- GROESSENS, E., CONIL, R. & HENNEBERT, M. 1982. Le Dinantien du sondage de Saint-Ghislain. *Mémoires pour servir à l'explication des cartes géologiques et minières de la Belgique*, 22: 1-137 (imprinted 1979).
- GROESSENS, E., CONIL, R. & LEES, A., 1976. Problèmes relatifs à la limite du Tournaisien et du Viséan en Belgique. *Bulletin de la Société belge de Géologie*, 82 (1): 17-50 (imprinted 1974).
- HANCE, L., POTY, E. & DEVUYST, F.-X., 2001 : Stratigraphie séquentielle du Dinantien type (Belgique) et corrélation avec le Nord de la France (Boulonnais, Avesnois). *Bulletin de la Société géologique de France*, 172, 4 : 411-426.
- HANCE, L., POTY, E. & DEVUYST, F.X., 2002. Sequence stratigraphy of the Belgian Lower Carboniferous – tentative correlation with the British Isles. In L.V. Hills, C.M. Henderson & E.W. Bamber (eds), *Carboniferous and Permian of the World. Canadian Society of Petroleum Geologists Memoir* 19, 41-51.
- HANCE, L. POTY, E. & DEVUYST, F.X., this volume a. The Ivorian Substage. In Dejonghe, L. (ed.), Current status of chronostratigraphic units named from Belgium and adjacent areas. *Geologica Belgica*.
- HANCE, L. POTY, E. & DEVUYST, F.X., this volume b. The Viséan Stage. In Dejonghe, L. (ed.), Current status of chronostratigraphic units named from Belgium and adjacent areas. *Geologica Belgica*.

- HECKEL, P., 2004. Chairman's column. *Newsletter on Carboniferous Stratigraphy*, 22: 1-3.
- HENNEBERT, M. & DOREMUS, P., 1997a. Notice explicative de la carte géologique Antoing-Leuze, 37/7-8. Ministère de la Région Wallonne-D.G.R.N.E., Namur: 1-76.
- HENNEBERT, M. & DOREMUS, P., 1997b. Notice explicative de la carte géologique Hertain-Tournai, 37/5-6. Ministère de la Région Wallonne-D.G.R.N.E., Namur: 1-66.
- KONINCK (de), L.G., 1842-1844. Description des animaux fossiles qui se trouvent dans le Terrain carbonifère de Belgique. Liège, H. Dessain.
- LARANGÉ, F., GÉRÔME, J-P., GROESSENS, E. & HIBO, D., 1998. Révision biostratigraphique du Calcaire de Tournai. *Annales de la Société géologique du Nord*, 6 (2^{ème} série): 87-93.
- LEES, A. 1997. Biostratigraphy, sedimentology and palaeobathymetry of Waulsortian buildups and peri-Waulsortian rocks during the late Tournaisian regression, Dinant area, Belgium. *Geological Journal*, 32: 1-36.
- LEES, A., HALLET, V. & HIBO, D., 1985. Facies variation in Waulsortian buildups, 1 ; a model from Belgium. *Geological Journal*, 20: 133-158.
- LEGRAND, R., MAMET, B. ET MORTELMANS, G., 1966. Sur la stratigraphie du Tournaisien de Tournai et de Leuze. Problèmes de l'étage Tournaisien dans sa localité-type. *Bulletin de la Société belge de Géologie*, 74 : 140-188.
- MAMET, B., MIKHAILOFF, N. & MORTELMANS, G., 1970. La stratigraphie du Tournaisien et du Viséen inférieur de Landelies. Comparaisons avec les coupes du Tournais et du bord nord du synclinal de Namur. *Mémoires de la Société belge de Géologie*, 9: 1-81.
- MENNING, M., WEYER, D., DROZDZEWSKI, G. & WENDT, I., 2001. More radiometric ages for the Carboniferous time scale. *Newsletter on Carboniferous Stratigraphy*, 19 : 16-18.
- MORTELMANS, G., 1969. L'étage Tournaisien dans sa localité-type. *Comptes rendus du 6^e Congrès International de Stratigraphie et de Géologie du Carbonifère*, Sheffield 1967, I: 19- 44.
- MORTELMANS, G., 1976. Evolution paléocéologique et sédimentologique du calcaire de Tournai : quelques lignes directrices. *Bulletin de la Société belge de Géologie*, 82 (1) : 141-180 (imprinted, 1973).
- PAPROTH, E., 1986. An introduction to a field trip to the Late Devonian outcrops in the Northern Rheinisches Schiefergebirge (Federal Republic of Germany). In : Bless, M.J.M. & Streel (Eds.): Late Devonian events around the Old Red Continent. *Annales de la Société géologique de Belgique*, 109: 275-284.
- PAPROTH, E., CONIL, R., BLESS, M.J.M., BOONEN, P., BOUCKAERT, J., CARPENTIER, N., COEN, M., DELCAMBRE, B., DEPRIJCK, C., DEUZON, S., DREESEN, R., GROESSENS, E., HANCE, L., HENNEBERT, M., HIBO, D., HAHN, G., HAHN, R., HILAIRE O., KASIG, W., LALOUX, M., LAUWERS, A., LEES, A., LYS, M., OP DE BEEK, K., OVERLAU, P., PIRLET, H., POTY, E., RAMSBOTTOM, W., STREEL, M., SWENNEN, R., THOREZ, J., VANGUESTAINE, M., VAN STEENWINKEL, M. & VIESLET, J.-L. (1983). Bio- and Lithostratigraphic subdivisions of the Dinantian in Belgium, a review. *Annales de la Société géologique de Belgique*, 106 : 185-239.
- PAPROTH, E., FEIST, R., AND FLAIJS, G., 1991. Decision on the Devonian-Carboniferous boundary stratotype. *Episodes* 14/4: 331 – 336.
- PAPROTH, E. & STREEL, M., 1984. Precision and practicability : on the definition of the Devonian-Carboniferous boundary. *Courier Forschung-Institut Senckenberg*, 67: 255-258.
- POTY, E., 1985. "A rugose coral biozonation for the Dinantian of Belgium as a basis for a coral biozonation of the Dinantian of Eurasia". *Comptes rendus du 10^e Congrès International de Stratigraphie et de Géologie du Carbonifère, Madrid 1983*, 4 : 29-31.
- POTY, E., 1997. Devonian and Carboniferous tectonics in the eastern and southeastern part of the Brabant Massif (Belgium). *Aardkundige Mededelingen*, 8: 143-144.
- POTY, E., BERKOWSKI, B., CHEVALIER, E. & HANCE, L., in press : Sequence stratigraphic and biostratigraphic correlations between the Dinantian deposits of Belgium and Southern Poland (Krakow area). *Proceedings of the 15th International Congress on the Carboniferous-Permian*, Utrecht, 2003.
- POTY, E., DEVUYST, F.X. & HANCE, L. (in press). Upper Devonian and Mississippian foraminiferal and rugose coral zonations of Belgium and Northern France, a tool for Eurasian correlations. *Geological Magazine*.
- POTY, E., HANCE, L., LEES, A. & HENNEBERT, M., 2002. Dinantian lithostratigraphic units (Belgium). In Bultynck, P ; & Dejonghe, L. (eds.). Guide to a revised lithostratigraphic scale of Belgium. *Geologica Belgica*, 4 (1-2): 69-94 (imprinted 2001).
- SANDBERG & ZIEGLER, 1984. Narrowing of worldwide search for conodont-based Devonian-Carboniferous boundary stratotype. *Geological Society of America*, Abstracts with programs, 16: 192.
- STREEL, M., 1969. Corrélations palynologiques entre les sédiments de transition Dévonien/Dinantien dans les bassins ardenno-rhénans. *Comptes rendus du 6^e Congrès International de Stratigraphie et de Géologie du Carbonifère*. Sheffield, I : 3-18.
- VAN STEENWINKEL, M., 1993. The Devonian-Carboniferous boundary in southern Belgium : biostratigraphic identification criteria of sequence boundaries. *Special Publications International Association of Sedimentologists*, 18: 237-246.
- WEBSTER, G.D., GROESSENS, E. 1991. Conodont subdivisions of the Lower Carboniferous. In: Brenckle, P.L., Manger, W.L. (eds.), Intercontinental Correlation and Division of the Carboniferous System. *Courier Forschungsinstitut Senckenberg*, 130: 31-40.

